

**1 Lamp  
CF TT5  
Recessed Direct/Indirect**

**APPLICATION**

- Architectural recessed direct/indirect lighting for glare-free illumination.
- Circular reflector and linear lamp shield provide unique aesthetics.
- Suitable for grid inverted T (Nema "G") ceilings. Flange type ceilings (Nema "F") require independently mounted flange kits (FMA).
- Fully recessed mounting.

**CONSTRUCTION/FINISH**

- No visible welding, screws, latches, springs, hooks, rivets or plastic supports.
- Soft white baked enamel finish.
- One piece housing for easy installation.
- Optional hold down clips available (order separately: cat # AVHD).

**ELECTRICAL**

- Class P, HPF ballasts comply with ©Federal Ballast Law (Public Law 100-357,1988).
- UL listed for damp locations. C.S.A. certified optional.
- Ballast access is from top.

**ENCLOSURES**

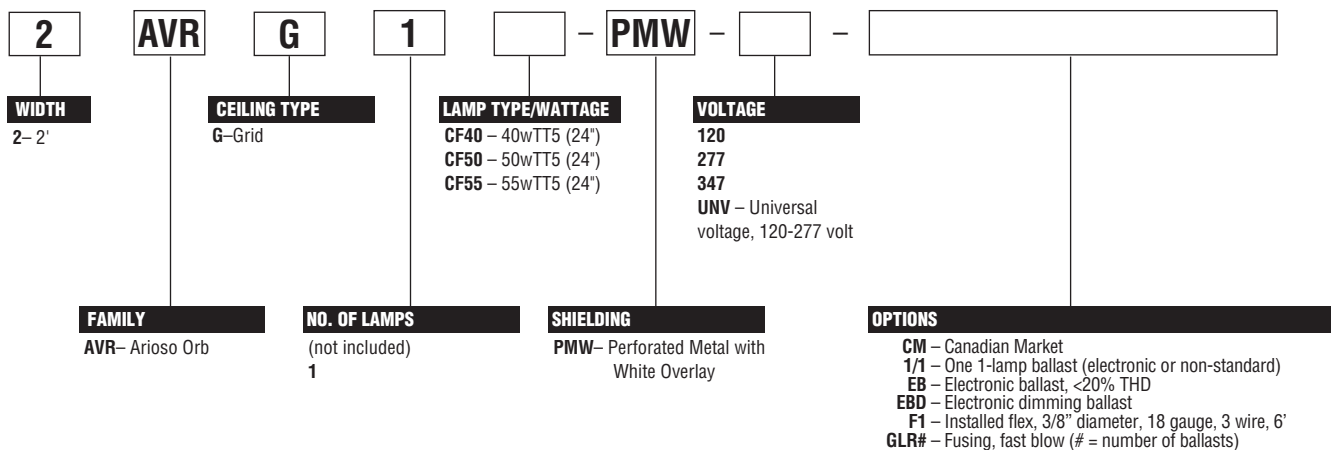
- Micro-perforated mesh lamp shields with narrow slot between provide soft awareness of light source.
- Soft white overlay on inside of micro-perforated mesh conceals lamp image and balances between reflected and direct light.
- Swing down lamp shields for easy relamping.

**ACCESSORIES**

- AVHD – Hold down clips
- FMA22 – 2'x2' "F" mounting frame for NEMA "F" mounting.

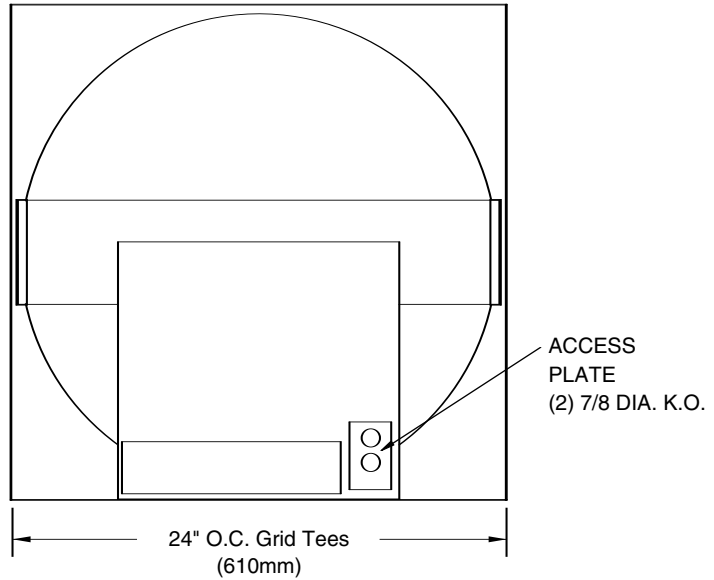
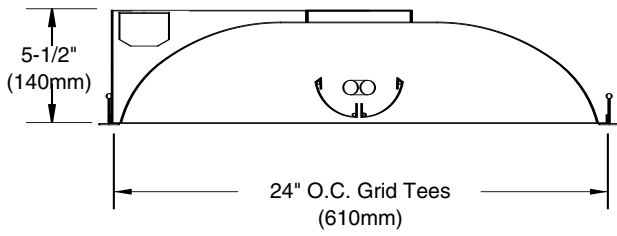
See sheet 445.2-SR for details on the "F" mounting frame.

**CATALOG NUMBER**



See section 1600-OA for ballast, lamp, and option information.

## DIMENSIONS



## PHOTOMETRIC DATA

CATALOG # 2AVRG1CF40-PMW-1/1-EB LAMPS = 40WTT5 INPUT WATTS = 40  
 TEST #26745 S/MH= 1.5 BALLAST = ELECTRONIC BALLAST FACTOR = 1.02

LER = 50

COMPARATIVE YEARLY LIGHTING ENERGY COST PER 1000 LUMENS = \$4.80 BASED ON 3000 HRS. AND \$.08 PER KWH.

FIXTURE EFFICIENCY = 61.9%

CANDLEPOWER			
Angle	End	45	Cross
0	586	586	586
5	584	585	587
10	577	581	587
15	566	575	587
20	547	566	587
25	525	555	585
30	497	541	583
35	464	524	578
40	426	505	569
45	386	480	555
50	341	449	532
55	294	409	493
60	245	359	429
65	198	298	314
70	152	218	171
75	105	134	96
80	63	60	56
85	25	23	22

MAINTAINED ILLUMINATION TABLE- Square Feet/Fixture*						
<ul style="list-style-type: none"> <li>80-50-20 Reflectances (Ceiling-Wall-Floor)</li> <li>LLF = 0.86 3150 Lumens/Lamp very clean</li> <li>Room width divided by room height = 5 or more, 2 or 1</li> </ul>						
Fixture Size & # of Lamps	Room Width Room Height =	Approx. Area (sq. ft.) per Fixture				
		10 ft-c	30 ft-c	50 ft-c	70 ft-c	100 ft-c
2' X 2' 1 Lamp CF40	5 2 1	- 117 84	58 39 -	35 -	- -	- -

\*Observe Fixture S/MH Requirements for Specific Applications

AVERAGE LUMINANCE CD/SQ.M WITH 3150 LUMEN LAMPS			
ANGLE	END	45°	CROSS
45	2037	2532	2928
55	1912	2660	3207
65	1748	2631	2772
75	1513	1932	1384
85	1070	985	942

TYPICAL V.C.P.'s			
Room Size	Mounting Height		
	Lengthwise	Crosswise	
	8.5	10	8.5 10
30x30	61	64	60 62
40x40	62	63	62 62
60x30	66	67	65 66
60x60	63	62	63 62
100x100	64	64	66 65

COEFFICIENT OF UTILIZATION							
pfc pcc pw RCR	20		70		50		
	70	50	30	70	50	30	50 30
0	73	73	73	71	71	71	68 68
1	67	64	61	66	63	59	59 57
2	60	56	51	58	55	51	52 48
3	55	48	42	54	47	42	46 41
4	50	42	36	48	41	36	40 35
5	46	38	32	45	36	32	35 30
6	42	34	28	40	33	28	32 28
7	39	30	25	38	29	25	28 23
8	36	28	23	35	27	22	27 22
9	34	26	20	33	25	20	23 20
10	32	23	17	30	23	17	23 17

LIGHT DISTRIBUTION			
DEGREES	LUMENS	% LAMP	% FIXTURE
0-30	474	15.0	24.3
0-40	801	25.4	41.1
0-60	1523	48.3	78.1
0-90	1949	61.9	100.0

LLF = .86 LLF = LIGHT LOSS FACTOR LLD = LDD X LLD X BF LDD = VERY CLEAN 0.94 CLEAN 0.90  
 LLD = 0.90 @ 40% RATED LAMP LIFE BF = 1.02 ELECTRONIC BALLAST & TTS LAMP (RELAMP AT 70% LAMP LIFE)