

1 1/2', 2', 3', 4', 6', or 8'
1 Lamp
T8 or T12

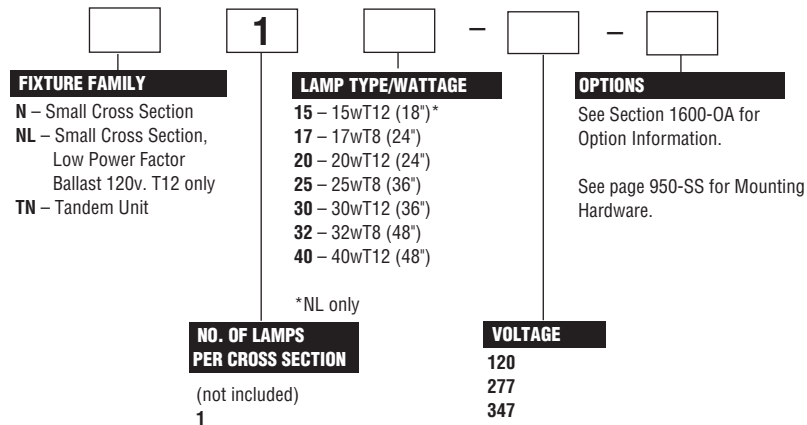
CONSTRUCTION/FINISH

- Multiple knockouts for convenient installation.
- High reflectance white baked enamel finish.
- Quarter turn latch secures channel cover for easy wireway access.
- Heavy duty channel of code gauge die formed steel.
- Fixtures suitable for unit, row, surface, or suspension mounting.
- See page 1119-S for strip reflectors.

ELECTRICAL

- UL listed for direct mounting on low density ceilings and damp locations.
- Class P, HPF, CBM certified ballasts comply with ©Federal Ballast Law (Public Law 100-357,1988).
- Minimum starting temperature is 50°F.
- Green grounding screw installed in channel.
- Lampholders may be individually replaced or rewired.

CATALOG NUMBER



NOTES:

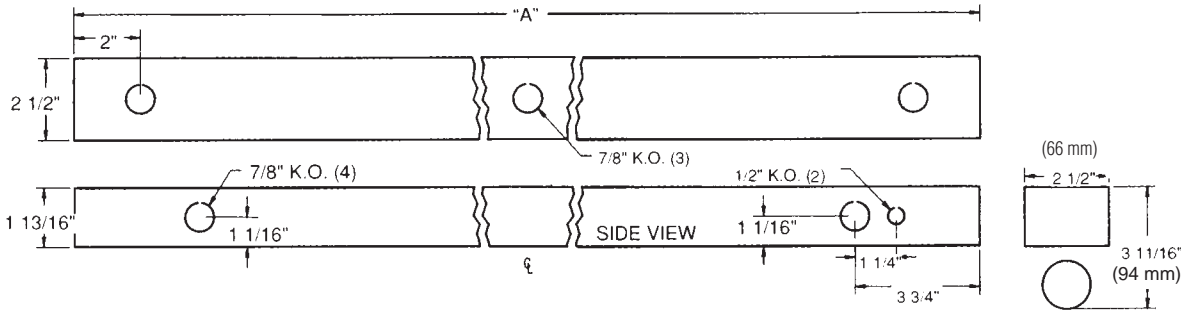
- With generic Electronic Ballasts (Brand selected by Day-Brite)
 Suffix Catalog # with **- Ballast Quantity - / -EB Lamps Per Ballast.**
- Example: -1/1-EB** = One 1 Lamp Electronic Ballast.
- Example: -1/2-EB** = One 2 Lamp Electronic Ballast.
- Some models not available with Electronic Ballasts.

SMALL CROSS SECTION STRIP



DIMENSIONS

DIM "A"	Inches	(mm)
8' CHANNEL	96"	(2438 mm)
4' CHANNEL	48"	(1219 mm)
3' CHANNEL	36"	(914 mm)
2' CHANNEL	24"	(610 mm)
18" CHANNEL	18"	(457 mm)



PHOTOMETRIC DATA

CATALOG # N140
TEST #13929

S/MH=1.7

LAMPS = F40 R.S.
BALLAST = ESB

INPUT WATTS = 47
BALLAST FACTOR = .94

LER = FS-57

COMPARATIVE YEARLY LIGHTING ENERGY COST PER 1000 LUMENS = \$4.21 BASED ON 3000 HRS. AND \$.08 PER KWH.

FIXTURE EFFICIENCY= 92.7%

CANDLEPOWER				
Angle	End	45	Cross	
0	435	435	435	
5	436	434	435	
15	418	430	440	
25	384	421	453	
35	335	410	471	
45	274	398	482	
55	202	378	481	
65	126	350	465	
75	54	304	425	
85	7	249	379	
95	0	245	372	
105	0	223	367	
115	0	142	292	
125	0	86	208	
135	0	40	125	
145	0	2	50	
155	0	0	0	
165	0	0	0	
175	0	0	0	

MAINTAINED ILLUMINATION TABLE- Square Feet/Fixture*

- 50-50-20 Reflectances (Ceiling-Wall-Floor)
- LLF = 0.74 3050 Lumens/Lamp Medium Dirt
- Room width divided by room height = 5 or more, 2 or 1

Fixture Size & # of Lamps	Room Width Room Height =	Approx. Area (sq. ft.) per Fixture				
		10 ft-c	30 ft-c	50 ft-c	70 ft-c	100 ft-c
4'	5	167	55	33	-	-
1 Lamp	2	106	35	21	-	-
	1	72	24	-	-	-

*Observe Fixture S/MH Requirements for Specific Applications

LIGHT LOSS FACTOR DATA

- LLF = 0.74 HPF Ballast
- LLF = 0.43 LPF Ballast
- LLF = Light Loss Factor
- LDD = Luminaire Dirt Depreciation
- LLD = Lamp Lumen Depreciation
- BF = Ballast Factor (commercial ballast performance)
- LLF = LDD x LLD x BF
- LDD = Clean 0.93 Medium 0.89 Dirty 0.85
- LDD = 0.88 @ 40% Rated Lamp Life
- BF = 0.94 HPF Ballast = 0.55 LPF Ballast Relamp @ 70% Lamp Life

COEFFICIENT OF UTILIZATION

pfc pcc pw	20						70						50					
	70	50	30	70	50	30	70	50	30	70	50	30	70	50	30	70	50	30
RCR	1	2	3	4	5	6	7	8	9	10	11	12	13	14	15	16	17	18
	92	86	81	87	82	78	74	70	63	62	57	54	48	45	47	41	34	30
	68	56	47	63	53	45	47	41	34	31	26	23	18	15	17	14	11	9
	51	38	30	48	36	29	33	26	21	19	15	12	9	7	8	6	5	4
	47	34	26	44	33	25	29	23	18	16	12	10	7	5	6	4	3	2
	44	31	23	41	29	22	26	20	15	14	10	8	5	4	5	3	2	1
	41	28	20	38	27	20	24	18	13	12	9	7	5	4	4	2	1	0

LIGHT DISTRIBUTION

DEGREES	LUMENS	% LAMP	% FIXTURE
0-30	358.	11.7	12.7
0-40	614.	20.1	21.7
0-60	1237.	40.6	43.8
0-90	2101.	68.9	74.3
90-180	727.	23.8	25.7
0-180	2827.	92.7	100.0

PHOTOMETRIC DATA

CATALOG # N140-1/1-EB
TEST # 14444

S/MH=1.6

LAMPS = F32T8
BALLAST = ELECTRONIC

INPUT WATTS = 36
BALLAST FACTOR = .96

LER = FS-73

COMPARATIVE YEARLY LIGHTING ENERGY COST PER 1000 LUMENS = \$3.29 BASED ON 3000 HRS. AND \$.08 PER KWH.

FIXTURE EFFICIENCY= 94.2%

CANDLEPOWER				
Angle	End	45	Cross	
0	464	464	464	
5	462	465	463	
15	443	460	468	
25	408	448	474	
35	357	429	477	
45	292	404	480	
55	216	377	472	
65	136	339	444	
75	60	283	398	
85	5	230	353	
95	0	223	346	
105	0	227	348	
115	0	135	306	
125	0	57	192	
135	0	0	81	
145	0	0	0	
155	0	0	0	
165	0	0	0	
175	0	0	0	

MAINTAINED ILLUMINATION TABLE- Square Feet/Fixture*

- 80-50-20 Reflectances (Ceiling-Wall-Floor)
- LLF = 0.82 2900 Lumens/Lamp Clean
- Room width divided by room height = 5 or more, 2 or 1

Fixture Size & # of Lamps	Room Width Room Height =	Approx. Area (sq. ft.) per Fixture				
		10 ft-c	30 ft-c	50 ft-c	70 ft-c	100 ft-c
4'	5	-	70	42	-	-
1-Lamp	2	134	45	-	-	-
	1	95	32	-	-	-

*Observe Fixture S/MH Requirements for Specific Applications

AVERAGE LUMINANCE CD/SQ.M WITH 2900 LUMEN LAMPS

ANGLE	END	45°	CROSS
45	13229	6856	6524
55	11823	6184	6056
65	9776	5544	5555
75	6572	4758	5007
85	1228	4108	4607

LLF = .82 LLF = LIGHT LOSS FACTOR LDD = LDD X LLD X BF LDD = VERY CLEAN 0.94 CLEAN 0.90
LLD = 0.91 @ 40% RATED LAMP LIFE BF = 0.96 ELECTRONIC BALLAST & T8 LAMP (RELAMP AT 70% LAMP LIFE)

TYPICAL V.C.P.'s

Room Size	Mounting Height			
	Lengthwise		Crosswise	
	8.5	10	8.5	10
30x30	20	24	16	20
40x40	17	19	14	16
60x30	21	24	19	22
60x60	15	17	12	14
100x100	14	16	11	12

COEFFICIENT OF UTILIZATION

pfc pcc pw	20						70						50					
	70	50	30	70	50	30	70	50	30	70	50	30	70	50	30	70	50	30
RCR	0	1	2	3	4	5	6	7	8	9	10	11	12	13	14	15	16	17
	107	107	107	102	102	102	92	92	83	88	82	89	83	79	75	71	64	57
	83	75	67	79	70	64	64	57	46	56	46	55	46	40	34	28	22	17
	68	56	46	65	54	45	47	40	33	40	30	39	29	24	19	14	10	7
	63	50	40	58	46	39	42	35	28	35	25	34	24	18	13	9	6	4
	57	45	35	54	41	34	38	30	23	30	21	28	19	14	10	7	5	3
	53	40	30	50	38	29	34	28	21	28	19	26	18	13	9	6	4	2
	50	35	25	46	34	27	32	25	18	25	17	23	15	11	8	5	3	1
	46	33	25	44	32	23	28	22	16	23	15	21	13	9	6	4	2	1
	42	29	23	40	28	22	27	20	14	21	13	19	11	8	5	3	1	0

LIGHT DISTRIBUTION

DEGREES	LUMENS	% LAMP	% FIXTURE
0-30	378	13.0	13.8
0-40	641	22.1	23.5
0-60	1265	43.6	46.3
0-90	2078	71.6	76.1
90-180	654	22.5	23.9
0-180	2731	94.2	100.0

1102-S

DAY-BRITE LIGHTING
776 South Green Street • Tupelo, Mississippi 38804 • PH: (662) 842-7212 • FAX: (662) 841-5501
CANADIAN DIVISION
189 Bullock Drive • Markham, Ontario L3P 1W4 • PH: (905) 294-9570 • FAX: (905) 294-9811

©2000 DAY-BRITE LIGHTING
HOT 03-00-20M
DAY-BRITE RESERVES THE RIGHT TO
MAKE CHANGES WITHOUT NOTICE.

Day-Brite | Capri | Omega
Genlyte Thomas Group