

**4', 6', 8', or 16'*
1 or 2 Lamp
Slimline T8 or T12**

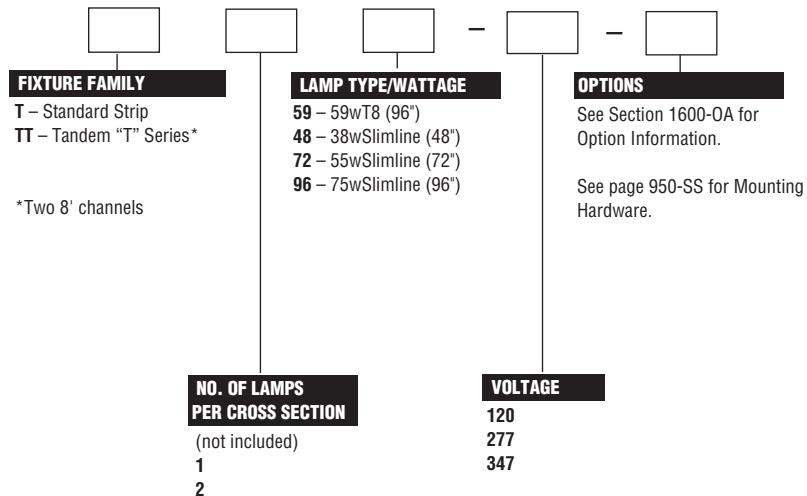
CONSTRUCTION/FINISH

- Luminaires suitable for unit, row, surface, or suspension mounting.
- Multiple knockouts for convenient installation.
- Heavy duty channel of code gauge die formed steel.
- High reflectance white baked enamel finish.
- Quarter turn latch secures channel cover for easy wireway access.
- See page 1119-S for strip reflectors.

ELECTRICAL

- UL listed for direct mounting on low density ceilings and damp locations.
- Class P, HPF, CBM certified ballasts comply with © Federal Ballast Law (Public Law 100-357,1988).
- Green grounding screw installed in channel.
- Lampholders may be individually replaced or rewired.

CATALOG NUMBER



NOTES:

- With generic Electronic Ballasts (Brand selected by Day-Brite)
Suffix Catalog # with – **Ballast Quantity** – / – **-EB** **Lamps Per Ballast.**

Example: –1/2-EB = One 2 Lamp Electronic Ballast.

Not all models available with Electronic Ballasts.

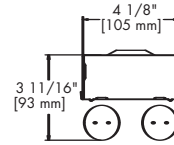
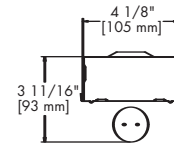
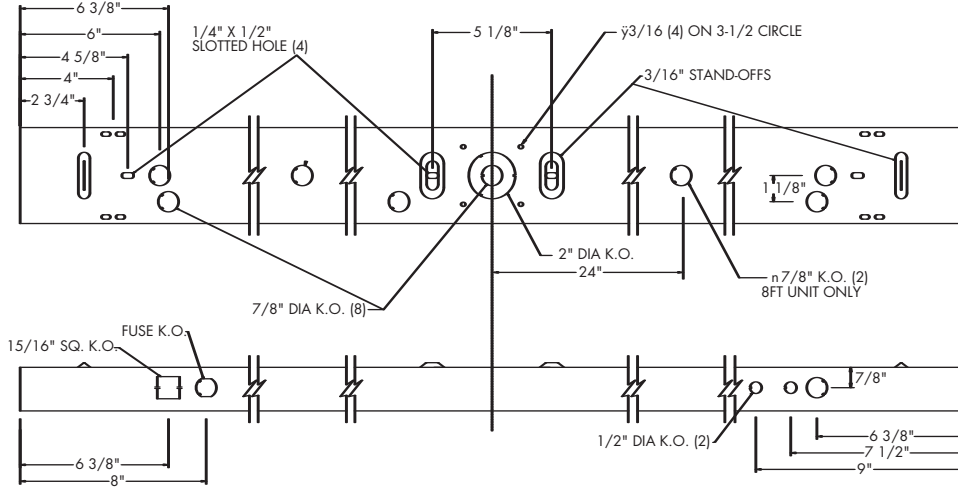
STANDARD STRIP SLIMLINE T8 OR T12



DIMENSIONS

NOTE: 2' & 3' MODELS INCLUDE ONLY OUTBOARD DETAILS

DIM "A"	Inches	(mm)
4" CHANNEL	48"	(1219 mm)
6" CHANNEL	72"	(1829 mm)
8" CHANNEL	96"	(2438 mm)



PHOTOMETRIC DATA

CATALOG # T296
TEST #13957-1P

S/MH=1.4

LAMPS = F96 ES
BALLAST = ESB

INPUT WATTS = 160
BALLAST FACTOR = .95

LER = FS-60

COMPARATIVE YEARLY LIGHTING ENERGY COST PER 1000 LUMENS = \$4.00 BASED ON 3000 HRS. AND \$.08 PER KWH.

FIXTURE EFFICIENCY= 91.3%

CANDLEPOWER				
Angle	End	45	Cross	
0	1915	1915	1915	
5	1905	1914	1915	
15	1835	1914	1970	
25	1697	1885	2009	
35	1492	1814	2005	
45	1232	1698	1949	
55	931	1524	1805	
65	600	1288	1560	
75	283	982	1275	
85	48	637	901	
95	5	585	906	
105	4	506	809	
115	5	384	698	
125	3	281	562	
135	7	209	424	
145	11	137	290	
155	13	88	162	
165	15	12	52	
175	16	3	10	

MAINTAINED ILLUMINATION TABLE- Square Feet/Fixture*						
<ul style="list-style-type: none"> 50-50-20 Reflectances (Ceiling-Wall-Floor) LLF = 0.78 5500 Lumens/Lamp Medium Dirt Room width divided by room height = 5 or more, 2 or 1 						
Fixture Size & # of Lamps	Room Width Room Height =	Approx. Area (sq. ft.) per Fixture				
		10 ft-c	30 ft-c	50 ft-c	70 ft-c	100 ft-c
8'	5	-	263	158	113	78
2-Lamp	2	-	174	104	75	52
	1	401	134	80	58	40

LIGHT LOSS FACTOR DATA			
LLF = 0.78	LLF = LDD X LLD X BF		
LLF = Light Loss Factor	LDD = Clean 0.93 Medium 0.89		
LLF = Luminaire Dirt Depreciation	Dirty 0.85		
LLF = IES Category I Clean Annually	LLD = 0.92 @ 40% Rated Lamp Life		
LLD = Lamp Lumen Depreciation	BF = 0.95		
BF = Ballast Factor (commercial ballast performance)	70% Lamp Life		

COEFFICIENT OF UTILIZATION							
pfc	20		70		50		
	80	70	50	30	50	30	
pw	70	50	30	70	50	30	
RCR	1	93	88	83	89	84	80
	2	84	75	68	79	72	66
	3	76	66	58	72	63	56
	4	69	58	49	65	55	47
	5	63	50	42	59	48	40
	6	57	45	36	54	43	35
	7	53	40	32	50	38	31
	8	48	36	28	46	34	27
	9	45	32	24	42	31	23
	10	41	29	22	39	28	21

LIGHT DISTRIBUTION			
DEGREES	LUMENS	% LAMP	% FIXTURE
0-30	1589.	14.4	15.8
0-40	2708.	24.6	27.0
0-60	5289.	48.1	52.7
0-90	8061.	73.3	80.3
90-180	1984.	18.0	19.7
0-180	10045.	91.3	100.0

PHOTOMETRIC DATA

CATALOG # T296-1/2-EB
TEST #10971

S/MH=1.6

LAMPS = F96 ES
BALLAST = ELECTRONIC

INPUT WATTS = 114
BALLAST FACTOR = 1.00

LER = FS-93

COMPARATIVE YEARLY LIGHTING ENERGY COST PER 1000 LUMENS = \$2.58 BASED ON 3000 HRS. AND \$.08 PER KWH.

FIXTURE EFFICIENCY= 96.7%

CANDLEPOWER				
Angle	End	45	Cross	
0	2036	2036	2036	
5	2027	2040	2042	
15	1957	2036	2089	
25	1815	2002	2135	
35	1612	1932	2139	
45	1353	1808	2084	
55	1046	1628	1920	
65	714	1359	1658	
75	387	1031	1355	
85	68	680	1024	
95	6	583	918	
105	2	486	813	
115	1	396	681	
125	1	306	531	
135	1	219	396	
145	1	141	266	
155	1	71	158	
165	1	29	58	
175	1	9	14	

MAINTAINED ILLUMINATION TABLE- Square Feet/Fixture*						
<ul style="list-style-type: none"> 80-50-20 Reflectances (Ceiling-Wall-Floor) LLF = 0.88 5500 Lumens/Lamp Clean Room width divided by room height = 5 or more, 2 or 1 						
Fixture Size & # of Lamps	Room Width Room Height =	Approx. Area (sq. ft.) per Fixture				
		10 ft-c	30 ft-c	50 ft-c	70 ft-c	100 ft-c
8'	5	-	-	-	127	89
2 Lamp	2	-	-	115	82	58
	1	-	137	82	59	41

*Observe Fixture S/MH Requirements for Specific Applications

AVERAGE LUMINANCE CD/SQ.M WITH 5500 LUMEN LAMPS			
ANGLE	END	45°	CROSS
45	7677	8081	8621
55	7267	8183	8734
65	6656	8083	8671
75	5748	7799	8641
85	2683	7372	8705

LLF = .88 LLF = LIGHT LOSS FACTOR LLF = LDD X LLD X BF LDD = VERY CLEAN 0.94 CLEAN 0.90
LLD = 0.93 @ 40% RATED LAMP LIFE BF = 1.00 ELECTRONIC BALLAST T8 & T12 LAMP (RELAMP AT 70% LAMP LIFE)

COEFFICIENT OF UTILIZATION						
pfc	20		70		50	
	80	70	50	30	50	30
pw	70	50	30	70	50	30
RCR	0	111	111	111	106	106
	1	97	92	86	93	88
	2	88	79	70	83	75
	3	80	68	58	75	65
	4	71	59	51	68	56
	5	66	53	44	63	51
	6	60	46	38	57	45
	7	56	41	34	53	40
	8	52	39	29	50	36
	9	48	34	27	46	34
	10	45	32	23	42	30

LIGHT DISTRIBUTION			
DEGREES	LUMENS	% LAMP	% FIXTURE
0-30	1688	15.3	15.9
0-40	2881	26.2	27.1
0-60	5638	51.3	53.0
0-90	8669	78.8	81.5
90-180	1971	17.9	18.5
0-180	10640	96.7	100.0

1104.1-S

DAY-BRITE LIGHTING
776 South Green Street • Tupelo, Mississippi 38804 • PH: (662) 842-7212 • FAX: (662) 841-5501
CANADIAN DIVISION
189 Bullock Drive • Markham, Ontario L3P 1W4 • PH: (905) 294-9570 • FAX: (905) 294-9811

©2005 DAY-BRITE LIGHTING
DB 10-05-500
DAY-BRITE RESERVES THE RIGHT TO
MAKE CHANGES WITHOUT NOTICE.

