

4', 8', or 16'  
1 or 2 Lamp

High Output T8(380mA) or T12(800mA)  
or T12 V.H.O. (1500mA)

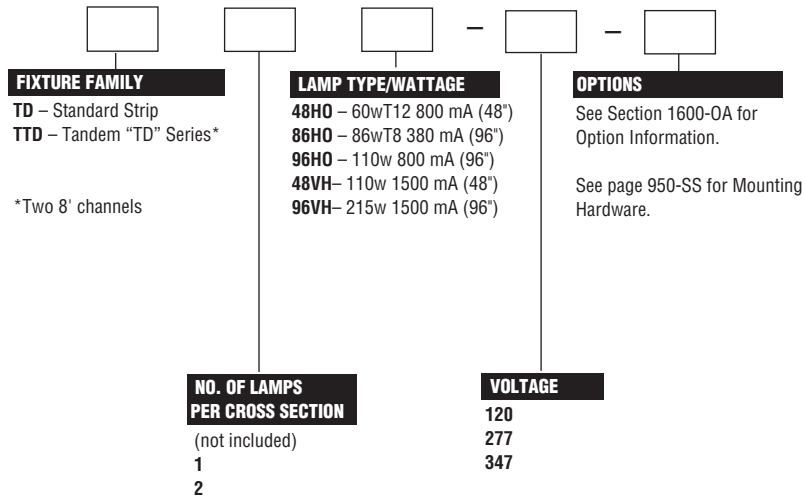
**CONSTRUCTION/FINISH**

- Fixtures suitable for unit, row, or suspension mounting.
- Multiple knockouts for convenient installation.
- Heavy duty channel of code gauge die formed steel.
- High reflectance white baked enamel finish.
- Quarter turn latch secures channel cover for easy wireway access.
- See page 1119-S for strip reflectors.

**ELECTRICAL**

- UL listed for damp locations.
- Class P, HPF, CBM certified ballasts comply with ©Federal Ballast Law (Public Law 100-357,1988).
- Pressure lock lampholders secured by snap-in socket plates.
- Green grounding screw installed in channel.
- Lampholders may be individually replaced or rewired.
- **IMPORTANT!** High Output and Very High Output fixtures must be suspended a minimum of 1-1/2" from surface.
- Day-Brite's standard fixtures for high output T8 (380mA) and T12 (800mA) include ballasts rated for -20° F starting temperature.

**CATALOG NUMBER**



**NOTES:**

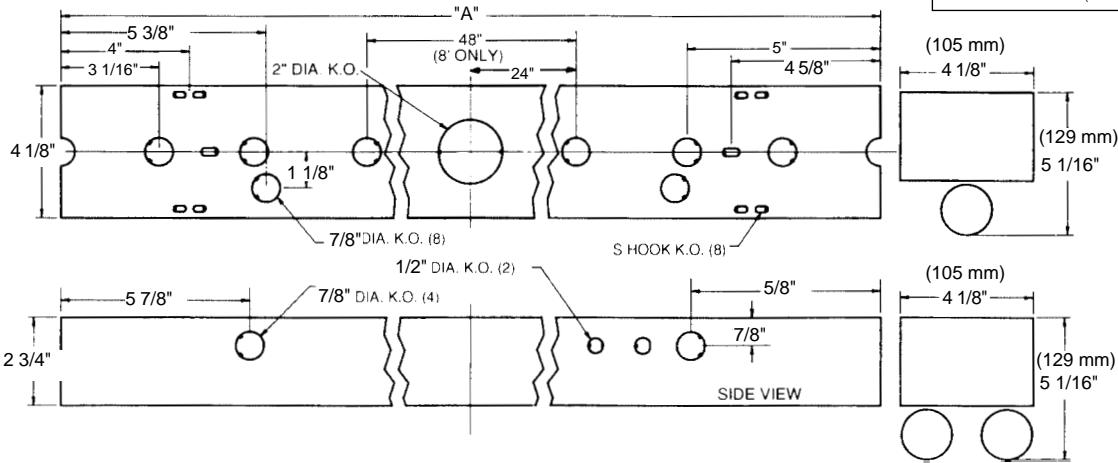
- With generic Electronic Ballasts (Brand selected by Day-Brite)  
Suffix Catalog # with— **Ballast Quantity** — / — **-EB Lamps Per Ballast.**

**Example: -1/2-EB** = One 2 Lamp Electronic Ballast.  
**Not all models available with Electronic Ballasts.**

# STANDARD STRIP



## DIMENSIONS



DIM "A"	Inches	(mm)
4' CHANNEL	48"	(1219 mm)
8' CHANNEL	96"	(2438 mm)

### PHOTOMETRIC DATA

CATALOG # TD296HO  
TEST #13956-1P

S/MH=1.6

LAMPS = F96 HO  
BALLAST = STANDARD

INPUT WATTS = 232  
BALLAST FACTOR = .95

LER = FS-67

COMPARATIVE YEARLY LIGHTING ENERGY COST PER 1000 LUMENS = \$3.58 BASED ON 3000 HRS. AND \$.08 PER KWH.

FIXTURE EFFICIENCY = 92.4%

CANDLEPOWER				
Angle	End	45	Cross	
0	2952	2952	2952	
5	2932	2980	2965	
15	2816	3001	3071	
25	2593	2964	3138	
35	2273	2836	3125	
45	1868	2633	3031	
55	1406	2351	2928	
65	912	2080	2555	
75	439	1554	1984	
85	98	903	1333	
95	22	955	1376	
105	22	988	1580	
115	16	815	1363	
125	17	604	1133	
135	23	472	897	
145	25	335	635	
155	30	200	388	
165	37	78	169	
175	39	9	25	

### MAINTAINED ILLUMINATION TABLE- Square Feet/Fixture\*

- 50-50-20 Reflectances (Ceiling-Wall-Floor)
- LLF = 0.74 8900 Lumens/Lamp Medium Dirt
- Room width divided by room height = 5 or more, 2 or 1

Fixture Size & # of Lamps	Room Width Room Height =	Approx. Area (sq. ft.) per Fixture				
		10 ft-c	30 ft-c	50 ft-c	70 ft-c	100 ft-c
8' 2-Lamp	5	-	335	203	142	101
	2	-	218	132	92	66
	1	-	154	91	65	46

### COEFFICIENT OF UTILIZATION

pfc	20			70			50		
	80	70	50	30	20	10	80	70	50
RCR	1	94	89	84	89	84	80	76	73
	2	84	76	69	80	72	66	65	60
	3	76	66	58	72	63	56	57	51
	4	69	58	49	66	55	48	50	44
	5	63	51	42	59	48	40	44	37
	6	58	45	36	54	43	35	39	32
	7	53	40	32	50	38	31	35	28
	8	49	36	28	46	34	27	31	25
	9	45	32	24	42	31	23	28	22
	10	42	29	22	39	28	21	25	19

### LIGHT LOSS FACTOR DATA

LLF = 0.74  
LLF = Light Loss Factor  
LDD = Luminaire Dirt Depreciation  
IES Category I Clean Annually  
LLD = Lamp Lumen Depreciation  
BF = Ballast Factor (commercial ballast performance relative to reference ballast)

LLF = LDD x LLD x BF  
LDD = Clean 0.94 Medium 0.89 Dirty 0.84  
LLD = 0.87 @ 40% Rated Lamp Life  
BF = 0.95 Relamp @ 70% Lamp Life

### LIGHT DISTRIBUTION

DEGREES	LUMENS	% LAMP	% FIXTURE
0-30	2475.	13.9	15.0
0-40	4218.	23.7	25.6
0-60	8246.	46.3	50.1
0-90	12561.	70.6	76.4
90-180	3890.	21.9	23.6
0-180	16451.	92.4	100.0

### PHOTOMETRIC DATA

CATALOG # TD296HO-1/2-EB  
TEST #10973

S/MH=1.6

LAMPS = F96 HO WM  
BALLAST = ELECTRONIC

INPUT WATTS = 165  
BALLAST FACTOR = 1.00

LER = FS-94

COMPARATIVE YEARLY LIGHTING ENERGY COST PER 1000 LUMENS = \$2.55 BASED ON 3000 HRS. AND \$.08 PER KWH.

FIXTURE EFFICIENCY = 97.1%

CANDLEPOWER				
Angle	End	45	Cross	
0	3029	3029	3029	
5	3035	3033	3029	
15	2932	3014	3091	
25	2724	2961	3152	
35	2423	2850	3148	
45	2039	2659	3054	
55	1553	2371	2804	
65	1042	1956	2379	
75	575	1453	1948	
85	205	1098	1488	
95	37	897	1342	
105	1	734	1186	
115	1	550	987	
125	1	414	739	
135	1	290	531	
145	1	169	347	
155	1	79	190	
165	1	29	52	
175	1	13	20	

### MAINTAINED ILLUMINATION TABLE- Square Feet/Fixture\*

- 80-50-20 Reflectances (Ceiling-Wall-Floor)
- LLF = 0.88 8000 Lumens/Lamp very clean
- Room width divided by room height = 5 or more, 2 or 1

Fixture Size & # of Lamps	Room Width Room Height =	Approx. Area (sq. ft.) per Fixture				
		10 ft-c	30 ft-c	50 ft-c	70 ft-c	100 ft-c
1' X 4' 2 Lamp	5	-	-	-	-	130
	2	-	-	-	120	84
	1	-	-	120	86	60

### COEFFICIENT OF UTILIZATION

pfc	20			70			50		
	80	70	50	30	20	10	80	70	50
RCR	0	111	111	111	107	107	107	97	97
	1	98	93	88	93	89	83	81	78
	2	89	79	71	83	76	68	69	64
	3	80	68	59	76	66	57	59	54
	4	72	59	51	68	57	48	53	46
	5	67	53	44	63	51	41	46	40
	6	60	47	38	57	46	36	41	34
	7	56	42	34	54	40	33	38	30
	8	52	39	29	50	36	28	34	28
	9	48	34	27	46	34	26	32	25
	10	46	33	25	44	30	23	28	23

### AVERAGE LUMINANCE CD/SQ.M WITH 2550 LUMEN LAMPS

ANGLE	END	45°	CROSS
45	11569	11885	12633
55	10789	11918	12756
65	9714	11634	12441
75	8540	10991	12423
85	8088	11903	12650

LLF = .88 LLF = LIGHT LOSS FACTOR LLF = LDD X LLD X BF LDD = VERY CLEAN 0.94 CLEAN 0.90  
LLD = 0.93 @ 40% RATED LAMP LIFE BF = 1.00 ELECTRONIC BALLAST T8 & T12 LAMP (RELAMP AT 70% LAMP LIFE)

### LIGHT DISTRIBUTION

DEGREES	LUMENS	% LAMP	% FIXTURE
0-30	2502	15.6	16.1
0-40	4264	26.7	27.4
0-60	8315	52.0	53.5
0-90	12735	79.6	82.0
90-180	2802	17.5	18.0
0-180	15536	97.1	100.0

1105-S

DAY-BRITE LIGHTING  
776 South Green Street • Tupelo, Mississippi 38804 • PH: (662) 842-7212 • FAX: (662) 841-5501  
CANADIAN DIVISION  
189 Bullock Drive • Markham, Ontario L3P 1W4 • PH: (905) 294-9570 • FAX: (905) 294-9811

©2000 DAY-BRITE LIGHTING  
HOT 03-00-20M  
DAY-BRITE RESERVES THE RIGHT TO  
MAKE CHANGES WITHOUT NOTICE.



Genlyte Thomas Group