

Strip Luminaire

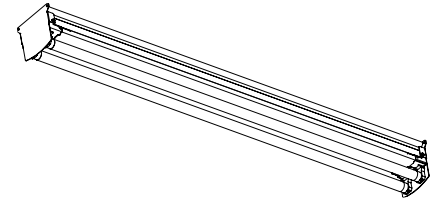
HDS Heavy Duty Strip
1 or 2 Lamp
T5, T5HO, T8 or T12

construction/finish

- Premium heavy duty industrial channel for added rigidity.
- Suitable for unit or row mounting in surface or suspended applications.
- Housing and end caps are multi-stage phosphate treated for maximum corrosion resistance and painted after fabrication with high reflectance white polyester powder coating.
- Thumbscrews secure channel cover for easy wireway access.

electrical

- High output 380mA (44HO, 86HO), high output 800mA (48HO, 96HO) and very high output 1500mA (48VH, 96VH) models come standard with -20°F start ballast where available.
- 32WT8, 40WT12, and Slimline models UL listed for direct mounting on low density ceilings.
- UL listed for damp locations. Units incorporating emergency ballasts UL listed for dry locations.
- Class P, HPF ballasts comply with ⓔ Federal Ballast Law (Public Law 100-357, 1988).
- Green grounding screw installed in channel.
- Lampholders may be individually replaced or rewired.



Specifier's Reference

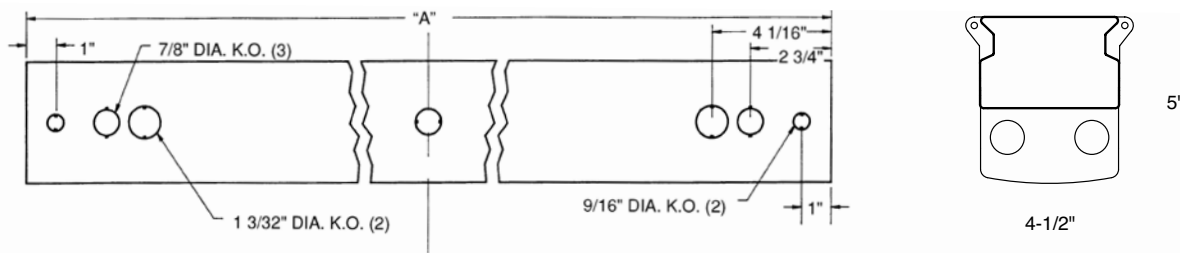
Project
Type
Model No.
Comments

Green Choice: HDS232-UNV-1/2-EBLHE

No. of Lamps/Cross Section (not included)	Voltage	
1	120	
2	277	
	347	
	UNV – Universal voltage, 120-277 volt (with T8 or T5 electronic ballast only)	
Family	Lamp Type/Wattage	Options
HDS – Heavy Duty Strip THDS – Tandem Version	28 – 28WT5 (46") 32 – 32WT8 (48") 40 – 40WT12 (48") 48 – 38WT12 Slimline (48") 44HO – 44WT8 380mA (48") 48HO – 60WT12 800mA (48") 48VH – 110WT12 1500mA (48") 54HO – 54WT5HO (46") 59 – 59WT8 (96") 96 – 75WT12 Slimline (96") 86HO – 86WT8 380mA (96") 96HO – 110WT12 800mA (96") 96VH – 215WT12 1500mA (96")	CM – Canadian Market 1/1 – One 1-lamp ballast (electronic or non-standard) 1/2 – One 2-lamp ballast (electronic or non-standard) 1/4 – One 4-lamp ballast (electronic or non-standard) 2/2 – Two 2-lamp ballasts (electronic or non-standard) EB – Electronic ballast, <20% THD EBH – High ballast factor electronic ballast (F32T8 only) EB10I – Electronic ballast, instant start, <10% THD EB10R – Electronic ballast, program rapid start, <10% THD EBHE – F32T8 electronic ballast, high efficiency, std. ballast factor EBLHE – F32T8 electronic ballast, high efficiency, low ballast factor EBHHE – F32T8 electronic ballast, high efficiency, high ballast factor E1 – DEB-1 emerg. ballast, 350-450 lumens, UL dry loc. E7 – DEB-7 emerg. ballast, 600-700 lumens, UL dry loc. E5 – DEB-5 emerg. ballast, 1100-1400 lumens, UL dry loc. ESST – DEB-5ST emerg. ballast w/self test, 1100-1400 lumens, UL dry loc. GLR# – Fusing, fast blow (# = number of ballasts) LT – Low temperature (0°F) start ballast (standard on F32T8, HO, VHO) Power-Connect modular wiring – see sheet 1604-OA
Accessories		
CG-4 – 4' Wire guard 5988W/5977W – Hydee hangers CS-400 – Rigid stem canopy CS-500 – Swivel stem canopy CS series stems FL-111 – Sliding hanger, conduit/stem/screw FL-116 – Sliding hanger, chain suspension FL-117 – Hook, chain FL-118 – Sliding hanger, messenger cable FL-119 – Hook, messenger cable FL-123 – 5' chain (w/S-hooks) set N-3380/3381 – Universal joint aligner, octagonal box, 1/2" / 3/4" I.P.S. N-3385 – Universal joint aligner, square box, 1/2" I.P.S.		See section 1600-OA for option info.

dimensions

DIM "A"		
4' Channel	(1219mm)	48"
8' Channel	(2438mm)	96"



HDS Strip, 4' 2 Lamp 32WT8

Efficiency – 93.3%

LER – 78

TER – 41

Catalog No. HDS232-1/2-EB Test No. 14719 S/MH 1.6 Lamp Type F32T8 Lumens/Lamp 2900 Ballast Factor .88 Input Watts 61 Comparative yearly lighting energy cost per 1000 lumens – \$3.08 based on 3000 hrs. and \$.08 pwr KWH. The photometric results were obtained in the Philips Day-Brite laboratory which is NVLAP accredited by the National Institute of Standards and Technology.	Candlepower				Light Distribution				Average Luminance																																																																																																																									
	<table border="1"> <thead> <tr> <th>Angle</th> <th>End</th> <th>45</th> <th>Cross</th> </tr> </thead> <tbody> <tr><td>0</td><td>1019</td><td>1019</td><td>1019</td></tr> <tr><td>5</td><td>1015</td><td>1018</td><td>1019</td></tr> <tr><td>15</td><td>976</td><td>1009</td><td>1034</td></tr> <tr><td>25</td><td>901</td><td>990</td><td>1059</td></tr> <tr><td>35</td><td>793</td><td>958</td><td>1059</td></tr> <tr><td>45</td><td>656</td><td>898</td><td>1019</td></tr> <tr><td>55</td><td>494</td><td>800</td><td>956</td></tr> <tr><td>65</td><td>320</td><td>688</td><td>911</td></tr> <tr><td>75</td><td>154</td><td>590</td><td>718</td></tr> <tr><td>85</td><td>28</td><td>308</td><td>432</td></tr> <tr><td>95</td><td>2</td><td>325</td><td>452</td></tr> <tr><td>105</td><td>3</td><td>305</td><td>512</td></tr> <tr><td>115</td><td>2</td><td>230</td><td>379</td></tr> <tr><td>125</td><td>2</td><td>160</td><td>334</td></tr> <tr><td>135</td><td>6</td><td>104</td><td>236</td></tr> <tr><td>145</td><td>6</td><td>46</td><td>133</td></tr> <tr><td>155</td><td>7</td><td>5</td><td>42</td></tr> <tr><td>165</td><td>8</td><td>6</td><td>6</td></tr> <tr><td>175</td><td>9</td><td>5</td><td>6</td></tr> </tbody> </table>	Angle	End	45	Cross	0	1019	1019	1019	5	1015	1018	1019	15	976	1009	1034	25	901	990	1059	35	793	958	1059	45	656	898	1019	55	494	800	956	65	320	688	911	75	154	590	718	85	28	308	432	95	2	325	452	105	3	305	512	115	2	230	379	125	2	160	334	135	6	104	236	145	6	46	133	155	7	5	42	165	8	6	6	175	9	5	6	<table border="1"> <thead> <tr> <th>Degrees</th> <th>Lumens</th> <th>% Lamp</th> <th>% Luminaire</th> </tr> </thead> <tbody> <tr><td>0-30</td><td>839</td><td>14.5</td><td>15.5</td></tr> <tr><td>0-40</td><td>1429</td><td>24.6</td><td>26.4</td></tr> <tr><td>0-60</td><td>2793</td><td>48.1</td><td>51.6</td></tr> <tr><td>0-90</td><td>4316</td><td>74.4</td><td>79.8</td></tr> <tr><td>0-180</td><td>5410</td><td>93.3</td><td>100.0</td></tr> </tbody> </table>	Degrees	Lumens	% Lamp	% Luminaire	0-30	839	14.5	15.5	0-40	1429	24.6	26.4	0-60	2793	48.1	51.6	0-90	4316	74.4	79.8	0-180	5410	93.3	100.0	<table border="1"> <thead> <tr> <th>Angle</th> <th>End</th> <th>45°</th> <th>Cross</th> </tr> </thead> <tbody> <tr><td>45</td><td>6257</td><td>6389</td><td>6686</td></tr> <tr><td>55</td><td>5693</td><td>6243</td><td>6738</td></tr> <tr><td>65</td><td>4843</td><td>6152</td><td>7171</td></tr> <tr><td>75</td><td>3551</td><td>6404</td><td>6627</td></tr> <tr><td>85</td><td>1448</td><td>4423</td><td>5003</td></tr> </tbody> </table>	Angle	End	45°	Cross	45	6257	6389	6686	55	5693	6243	6738	65	4843	6152	7171	75	3551	6404	6627	85	1448	4423
Angle	End	45	Cross																																																																																																																															
0	1019	1019	1019																																																																																																																															
5	1015	1018	1019																																																																																																																															
15	976	1009	1034																																																																																																																															
25	901	990	1059																																																																																																																															
35	793	958	1059																																																																																																																															
45	656	898	1019																																																																																																																															
55	494	800	956																																																																																																																															
65	320	688	911																																																																																																																															
75	154	590	718																																																																																																																															
85	28	308	432																																																																																																																															
95	2	325	452																																																																																																																															
105	3	305	512																																																																																																																															
115	2	230	379																																																																																																																															
125	2	160	334																																																																																																																															
135	6	104	236																																																																																																																															
145	6	46	133																																																																																																																															
155	7	5	42																																																																																																																															
165	8	6	6																																																																																																																															
175	9	5	6																																																																																																																															
Degrees	Lumens	% Lamp	% Luminaire																																																																																																																															
0-30	839	14.5	15.5																																																																																																																															
0-40	1429	24.6	26.4																																																																																																																															
0-60	2793	48.1	51.6																																																																																																																															
0-90	4316	74.4	79.8																																																																																																																															
0-180	5410	93.3	100.0																																																																																																																															
Angle	End	45°	Cross																																																																																																																															
45	6257	6389	6686																																																																																																																															
55	5693	6243	6738																																																																																																																															
65	4843	6152	7171																																																																																																																															
75	3551	6404	6627																																																																																																																															
85	1448	4423	5003																																																																																																																															
Coefficients of Utilization																																																																																																																																		
EFFECTIVE FLOOR CAVITY REFLECTANCE 20 PER (pfc=0.20)																																																																																																																																		
pcc	80			70			50																																																																																																																											
pw	70	50	30	70	50	30	50	30																																																																																																																										
RCR																																																																																																																																		
0	107	107	107	102	102	102	93	93																																																																																																																										
1	94	89	83	90	84	81	78	73																																																																																																																										
2	84	76	68	80	72	66	66	60																																																																																																																										
3	77	66	56	71	63	55	56	51																																																																																																																										
4	69	56	48	66	55	46	50	42																																																																																																																										
5	64	51	41	59	48	40	44	36																																																																																																																										
6	57	45	36	55	42	34	40	33																																																																																																																										
7	54	40	32	51	39	30	35	28																																																																																																																										
8	50	36	28	46	35	28	33	26																																																																																																																										
9	46	34	26	44	32	25	29	23																																																																																																																										
10	44	30	23	40	29	23	28	20																																																																																																																										

HDS Strip, 4' 2 Lamp F96T12HOES

Efficiency – 97.1%

LER – 94

TER – 51

Catalog No. HDS296HO-1/2-EB Test No. 10973 S/MH 1.6 Lamp Type F96T12HOES Lumens/Lamp 8000 Ballast Factor 1.00 Input Watts 165 Comparative yearly lighting energy cost per 1000 lumens – \$2.55 based on 3000 hrs. and \$.08 pwr KWH. The photometric results were obtained in the Philips Day-Brite laboratory which is NVLAP accredited by the National Institute of Standards and Technology.	Candlepower				Light Distribution				Average Luminance																																																																																																																									
	<table border="1"> <thead> <tr> <th>Angle</th> <th>End</th> <th>45</th> <th>Cross</th> </tr> </thead> <tbody> <tr><td>0</td><td>3029</td><td>3029</td><td>3029</td></tr> <tr><td>5</td><td>3035</td><td>3033</td><td>3029</td></tr> <tr><td>15</td><td>2932</td><td>3014</td><td>3091</td></tr> <tr><td>25</td><td>2724</td><td>2961</td><td>3152</td></tr> <tr><td>35</td><td>2423</td><td>2850</td><td>3148</td></tr> <tr><td>45</td><td>2039</td><td>2659</td><td>3054</td></tr> <tr><td>55</td><td>1553</td><td>2371</td><td>2804</td></tr> <tr><td>65</td><td>1042</td><td>1956</td><td>2379</td></tr> <tr><td>75</td><td>575</td><td>1453</td><td>1948</td></tr> <tr><td>85</td><td>205</td><td>1098</td><td>1488</td></tr> <tr><td>95</td><td>37</td><td>897</td><td>1342</td></tr> <tr><td>105</td><td>1</td><td>734</td><td>1186</td></tr> <tr><td>115</td><td>1</td><td>550</td><td>987</td></tr> <tr><td>125</td><td>1</td><td>414</td><td>739</td></tr> <tr><td>135</td><td>1</td><td>290</td><td>531</td></tr> <tr><td>145</td><td>1</td><td>169</td><td>347</td></tr> <tr><td>155</td><td>1</td><td>79</td><td>190</td></tr> <tr><td>165</td><td>1</td><td>29</td><td>52</td></tr> <tr><td>175</td><td>1</td><td>13</td><td>20</td></tr> </tbody> </table>	Angle	End	45	Cross	0	3029	3029	3029	5	3035	3033	3029	15	2932	3014	3091	25	2724	2961	3152	35	2423	2850	3148	45	2039	2659	3054	55	1553	2371	2804	65	1042	1956	2379	75	575	1453	1948	85	205	1098	1488	95	37	897	1342	105	1	734	1186	115	1	550	987	125	1	414	739	135	1	290	531	145	1	169	347	155	1	79	190	165	1	29	52	175	1	13	20	<table border="1"> <thead> <tr> <th>Degrees</th> <th>Lumens</th> <th>% Lamp</th> <th>% Luminaire</th> </tr> </thead> <tbody> <tr><td>0-30</td><td>2502</td><td>15.6</td><td>16.1</td></tr> <tr><td>0-40</td><td>4264</td><td>26.7</td><td>27.4</td></tr> <tr><td>0-60</td><td>8315</td><td>52.0</td><td>53.5</td></tr> <tr><td>0-90</td><td>12735</td><td>79.6</td><td>82.0</td></tr> <tr><td>0-180</td><td>15536</td><td>97.1</td><td>100.0</td></tr> </tbody> </table>	Degrees	Lumens	% Lamp	% Luminaire	0-30	2502	15.6	16.1	0-40	4264	26.7	27.4	0-60	8315	52.0	53.5	0-90	12735	79.6	82.0	0-180	15536	97.1	100.0	<table border="1"> <thead> <tr> <th>Angle</th> <th>End</th> <th>45°</th> <th>Cross</th> </tr> </thead> <tbody> <tr><td>45</td><td>11569</td><td>11885</td><td>12633</td></tr> <tr><td>55</td><td>10789</td><td>11918</td><td>12756</td></tr> <tr><td>65</td><td>9714</td><td>11634</td><td>12441</td></tr> <tr><td>75</td><td>8540</td><td>10991</td><td>12423</td></tr> <tr><td>85</td><td>8088</td><td>11903</td><td>12650</td></tr> </tbody> </table>	Angle	End	45°	Cross	45	11569	11885	12633	55	10789	11918	12756	65	9714	11634	12441	75	8540	10991	12423	85	8088	11903
Angle	End	45	Cross																																																																																																																															
0	3029	3029	3029																																																																																																																															
5	3035	3033	3029																																																																																																																															
15	2932	3014	3091																																																																																																																															
25	2724	2961	3152																																																																																																																															
35	2423	2850	3148																																																																																																																															
45	2039	2659	3054																																																																																																																															
55	1553	2371	2804																																																																																																																															
65	1042	1956	2379																																																																																																																															
75	575	1453	1948																																																																																																																															
85	205	1098	1488																																																																																																																															
95	37	897	1342																																																																																																																															
105	1	734	1186																																																																																																																															
115	1	550	987																																																																																																																															
125	1	414	739																																																																																																																															
135	1	290	531																																																																																																																															
145	1	169	347																																																																																																																															
155	1	79	190																																																																																																																															
165	1	29	52																																																																																																																															
175	1	13	20																																																																																																																															
Degrees	Lumens	% Lamp	% Luminaire																																																																																																																															
0-30	2502	15.6	16.1																																																																																																																															
0-40	4264	26.7	27.4																																																																																																																															
0-60	8315	52.0	53.5																																																																																																																															
0-90	12735	79.6	82.0																																																																																																																															
0-180	15536	97.1	100.0																																																																																																																															
Angle	End	45°	Cross																																																																																																																															
45	11569	11885	12633																																																																																																																															
55	10789	11918	12756																																																																																																																															
65	9714	11634	12441																																																																																																																															
75	8540	10991	12423																																																																																																																															
85	8088	11903	12650																																																																																																																															
Coefficients of Utilization																																																																																																																																		
EFFECTIVE FLOOR CAVITY REFLECTANCE 20 PER (pfc=0.20)																																																																																																																																		
pcc	80			70			50																																																																																																																											
pw	70	50	30	70	50	30	50	30																																																																																																																										
RCR																																																																																																																																		
0	111	111	111	107	107	107	97	97																																																																																																																										
1	98	93	88	93	89	83	81	78																																																																																																																										
2	89	79	71	83	76	68	69	64																																																																																																																										
3	80	68	59	76	66	57	59	54																																																																																																																										
4	72	59	51	68	57	48	53	46																																																																																																																										
5	67	53	44	63	51	41	46	40																																																																																																																										
6	60	47	38	57	46	36	41	34																																																																																																																										
7	56	42	34	54	40	33	38	30																																																																																																																										
8	52	39	29	50	36	28	34	28																																																																																																																										
9	48	34	27	46	34	26	32	25																																																																																																																										
10	46	33	25	44	30	23	28	23																																																																																																																										



©2012 Philips Day-Brite
 All rights reserved.
 776 South Green Street • Tupelo, MS 38804
 p. 800.234.1890 • f. 662.841.5501 • www.daybrite.com
 Canadian Division
 189 Bullock Drive • Markham, Ontario L3P 1W4
 p. 905.294.9570 • f. 905.294.9811

Contact Factory for Additional Configurations.
 Specifications are subject to change without notice.
 Consult website for latest version of this spec sheet.

Some luminaires use fluorescent or high intensity discharge (HID) lamps that contain small amounts of mercury. Such lamps are labeled, "Contain Mercury" and/or the symbol "HG". Lamps that contain mercury must be disposed of in accordance with local requirements. Information regarding lamp recycling and disposal can be found at www.lamprecycle.org

