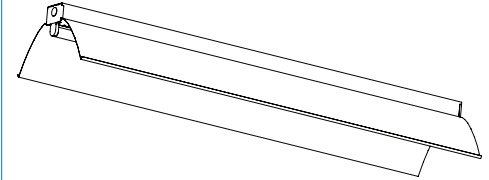


T8 Narrow Distribution Strip
4' or 8' 1 Lamp T8



construction/finish

- Photometric distribution is tightly controlled and focused with spacing/mounting height of 0.6 perpendicular to the lamp.
- Applications include task lighting and aisle lighting. Can be used in continuous rows as an alternative to individually mounted multi-lamp fluorescent high bays.
- Suitable for individual or row mounting in surface mount or suspended applications.
- Combination channel end plate/couplers included.
- Heavy-duty channel of code gauge die-formed steel.
- Channel is multi-stage phosphate treated for maximum corrosion resistance and finish coat is high reflectance baked white enamel
- Reflector is fabricated from 95% reflective specular aluminum to maximize luminaire efficiency and light control.
- Reflector is retained by quarter turn fasteners, providing easy ballast access without tools.

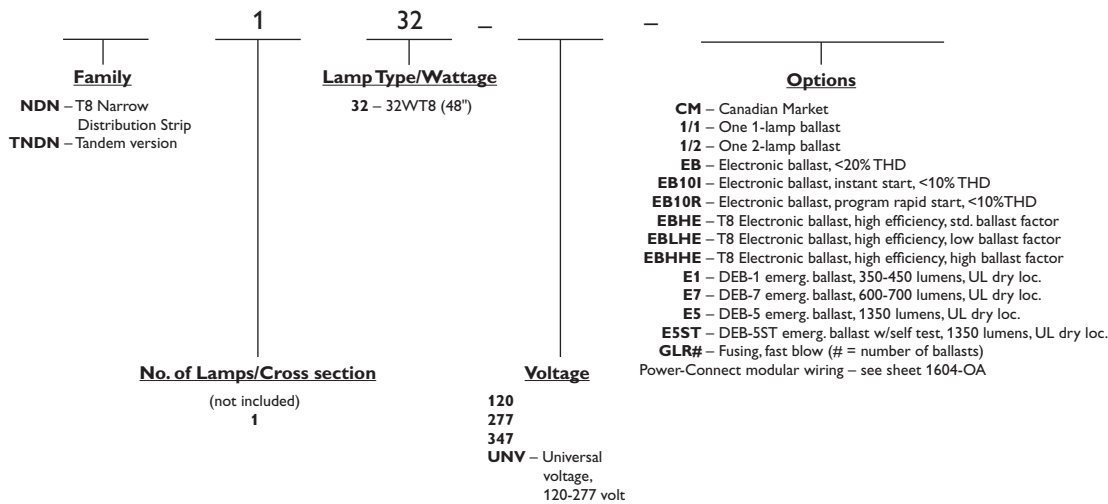
electrical

- Class P, HPF ballasts comply with ⓔ Federal Ballast Law (Public Law 100-357, 1988)
- Minimum starting temperature is 0°F for most models when used with non-energy saving lamps.
- Green grounding screw installed in channel.
- Lampholders may be individually replaced or rewired.
- Twist-lock locking lampholders provide secure lamp retention and positive electrical contact.
- UL listed for direct mounting on low density ceilings.
- UL listed for damp locations. Units incorporating emergency ballasts UL listed for dry locations.

Specifier's Reference

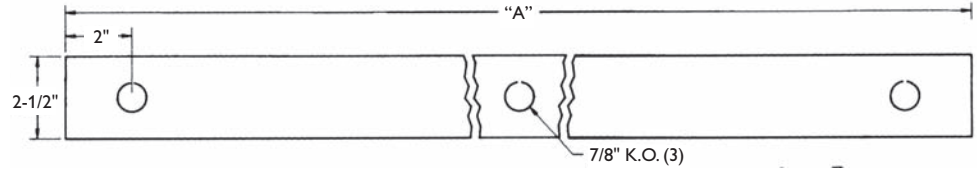
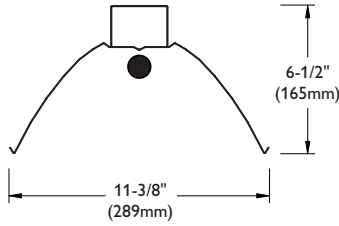
Project
Type
Model No.
Comments

Green Choice: TNDN132-UNV-1/2-EBHHE



1408-IF dimensions

T5 Narrow Distribution Strip



DIM "A"	Inches	(mm)
4' CHANNEL	48"	(1219 mm)
8' CHANNEL	96"	(2438 mm)

photometry

4' or 8' 1 Lamp T8

Efficiency – 95.4%

LER – 77

TER – 56

Catalog No.	NDN132	Candlepower				Light Distribution				Average Luminance			
		Angle	End	45	Cross	Degrees	Lumens	% Lamp	% Luminaire	Angle	End	45°	Cross
Test No.	28998	0	2001	2001	2001	0-30	1159	40.7	42.6	45	6272	2471	2040
S/MH	0.6	5	1993	1964	1902	0-40	1672	58.7	61.5	55	5717	1845	275
Lamp Type	F32T8	15	1906	1587	1282	0-60	2427	85.1	89.2	65	4737	187	76
Lumens/Lamp	2850	25	1751	971	751	0-90	2660	93.3	97.8	75	2953	208	139
Ballast Factor	0.88	35	1523	580	550	90-120	30	1.0	1.1	85	906	453	371
Input Watts	31	45	1236	487	402	90-130	37	1.3	1.4				
		55	914	295	44	90-150	50	1.8	1.8				
		65	558	22	9	90-180	59	2.1	2.2				
		75	213	15	10	0-180	2719	95.4	100.0				
		85	22	11	9								
		95	7	10	10								
		105	6	9	10								
		115	7	9	10								
		125	6	9	10								
		135	5	9	10								
		145	7	10	12								
		155	7	11	11								
		165	9	12	13								
		175	9	11	12								

Comparative yearly lighting energy cost per 1000 lumens – \$3.12 based on 3000 hrs. and \$.08 pwr KWH.

The photometric results were obtained in the Philips Day-Brite laboratory which is NVLAP accredited by the National Institute of Standards and Technology.

Coefficients of Utilization												
EFFECTIVE FLOOR CAVITY REFLECTANCE 20 PER (pfc=0.20)												
pcc	80			70			50					
	70	50	30	70	50	30	50	30				
RCR												
0	112	112	112	110	110	110	105	105				
1	106	102	98	103	100	96	94	93				
2	97	92	86	95	90	84	85	81				
3	91	82	76	89	81	75	78	72				
4	84	75	68	81	73	67	70	66				
5	79	68	60	77	67	60	65	58				
6	73	63	55	71	61	55	59	54				
7	68	57	51	67	56	50	55	48				
8	65	54	46	63	53	46	51	45				
9	60	50	42	59	48	42	47	41				
10	57	46	40	56	46	39	45	39				



©2011 Philips Day-Brite
All rights reserved.

776 South Green Street • Tupelo, MS 38804
p. 800.234.1890 • f. 662.841.5501
Canadian Division
189 Bullock Drive • Markham, Ontario L3P 1W4
p. 905.294.9570 • f. 905.294.9811

Contact Factory for Additional Configurations.

Specifications are subject to change without notice.

Some luminaires use fluorescent or high intensity discharge (HID) lamps that contain small amounts of mercury. Such lamps are labeled, "Contain Mercury" and/or the symbol "HG". Lamps that contain mercury must be disposed of in accordance with local requirements. Information regarding lamp recycling and disposal can be found at www.lamprecycle.org

