

Industrial Fluorescent

1F

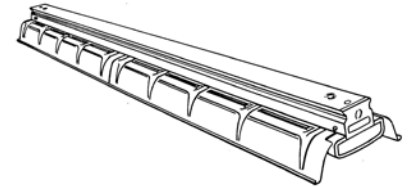
2 Lamp 1500 mA V.H.O.
10% Uplight

construction/finish

- Reflectors provide 10% uplight. Solid tops are optional.
- Multiple knockouts for convenient installation.
- Heavy duty channel of code gauge die formed steel,
- Reflectors have stiffening ribs for rigidity and provide 13° crosswise shielding.
- Twist-lock reflector thumb screws.
- Continuous rows utilize a simple concealed coupling, FL-3 (optional).

electrical

- UL listed for damp locations. C.S.A. certified optional.
- Spring-loaded turret lampholders provide positive lamp engagement and electrical contact.



Specifier's Reference

Project
Type
Model No.
Comments

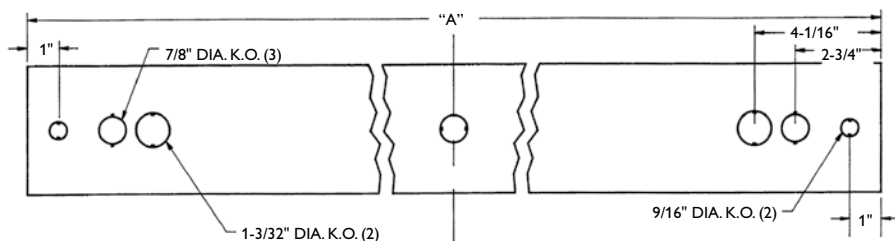
Green Choice: 1F296VH-PP-277

Family	No. of Lamps/Cross Section (not included)	Lamp Type/Wattage	Reflector Options	Voltage	Options
1F – Spec. Industrial (10% uplight) 1FC – CSA Model	2	48VH – 110W 1500 mA (48") 96VH – 215W 1500 mA (96")	PP – Painted Polyester PPS – Painted Polyester solid top P2 – 23% Perforated Painted	120 277 347	E7 – DEB-7 emerg. ballast, 600-700 lumens E5 – DEB-5 emerg. ballast, 1100-1400 lumens ESST – DEB-5ST emerg. ballast w/self test, 1100-1400 lumens GLR# – Fusing, fast blow (# = number of ballasts)

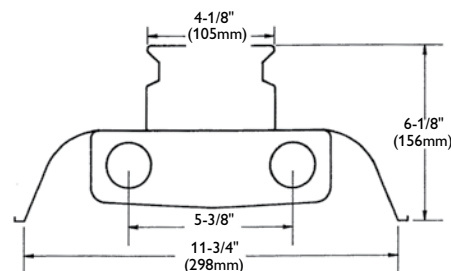
Accessories

- 5988W/5977W – Hydee hangers (4' models only)
- CS-400 – Rigid stem canopy
- CS-500 – Swivel stem canopy
- CS series stems**
- FL-111 – Sliding hanger, conduit/stem/screw
- FL-116 – Sliding hanger, chain suspension
- FL-117 – Hook, chain
- FL-118 – Sliding hanger, messenger cable
- FL-119 – Hook, messenger cable
- FL-123 – 5' chain (w/S-hooks) set
- FL-143/144/145 – 4' steel louver (use 2 for 8')
- FL-153/154/155 – 4' steel baffle (use 2 for 8')
- FL-161A/162A/163A – 4' prismatic diffusers (use 2 for 8')
- FL-173 – 4' wire guard (use 2 for 8')
- FL-3 – Channel coupling
- FL-5 – Reflector end cap (pair)
- N-3380/3381 – Universal joint aligner, octagonal box, 1/2" / 3/4" I.P.S.
- N-3385 – Universal joint aligner, square box, 1/2" I.P.S.

dimensions



DIM "A"		
4' Channel	(1227mm)	48-5/16"
8' Channel	(2446mm)	96-5/16"



photometry

1F 8' 2 Lamp F96T12VHO

Efficiency – 86.3%

LER – 50

TER – 30

Catalog No.	1F296VH-PP	Candlepower				Light Distribution				Average Luminance			
		Angle	End	45	Cross	Degrees	Lumens	% Lamp	% Luminaire	Angle	End	45°	Cross
Test No.	42354	0	6280	6280	6280	0-30	4990	18.5	21.4	45	7939	8616	9195
S/MH	1.4	5	6276	6240	6317	0-40	8334	30.9	35.7	55	7829	8965	8882
Lamp Type	F96T12 VHO	15	6082	6079	6183	0-60	15431	57.2	66.2	65	7539	8502	8520
Lumens/Lamp	13500	25	5686	5777	5975	0-90	20248	75.0	86.8	75	6842	8543	6772
Ballast Factor	0.95	35	5103	5354	5572	90-180	3066	11.4	13.2	85	5349	4950	4861
Input Watts	442	45	4359	4731	5049	0-180	23314	86.3	100.0				
		55	3487	3993	3956	Coefficients of Utilization							
		65	2474	2790	2796	EFFECTIVE FLOOR CAVITY REFLECTANCE 20 PER (pfc=0.20)							
		75	1375	1717	1361	pcc							
		85	362	335	329	pw							
		95	38	107	128	RCR							
		105	278	141	244	0							
		115	577	155	151	1							
		125	878	340	225	2							
		135	1155	564	425	3							
		145	1388	767	660	4							
		155	1577	996	876	5							
		165	1707	1518	1307	6							
		175	1767	1738	1749	7							
						8							
						9							
						10							

Comparative yearly lighting energy cost per 1000 lumens – \$4.80 based on 3000 hrs. and \$.08 pwr KWH.

The photometric results were obtained in the Philips Day-Brite laboratory which is NVLAP accredited by the National Institute of Standards and Technology.



©2012 Philips Day-Brite
 All rights reserved.
 776 South Green Street • Tupelo, MS 38804
 p. 800.234.1890 • f. 662.841.5501 • www.daybrite.com
 Canadian Division
 189 Bullock Drive • Markham, Ontario L3P 1W4
 p. 905.294.9570 • f. 905.294.9811

Contact Factory for Additional Configurations.
 Specifications are subject to change without notice.
 Consult website for latest version of this spec sheet.
 Some luminaires use fluorescent or high intensity discharge (HID) lamps that contain small amounts of mercury. Such lamps are labeled, "Contain Mercury" and/or the symbol "HG". Lamps that contain mercury must be disposed of in accordance with local requirements. Information regarding lamp recycling and disposal can be found at www.lamprecycle.org

