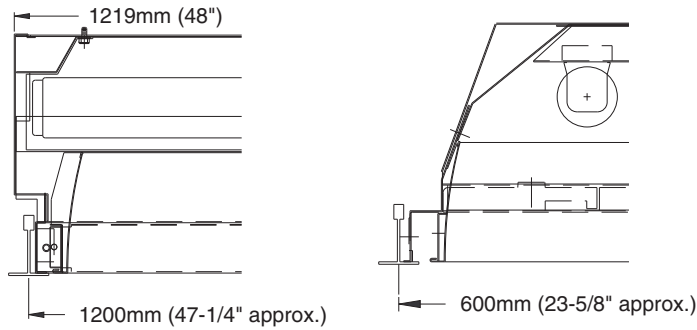
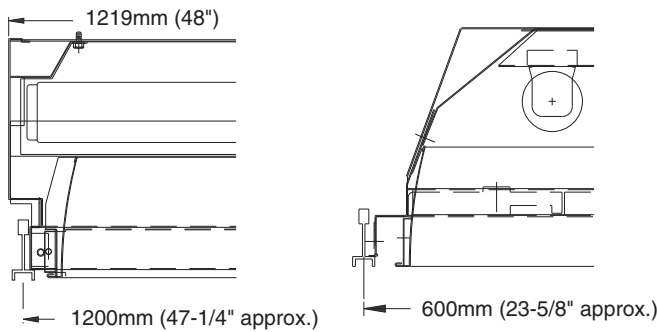


Typical 600mm x 1200mm Hard Metric Luminaire/Ceiling Compatibility Drawings

Metric Grid Ceiling

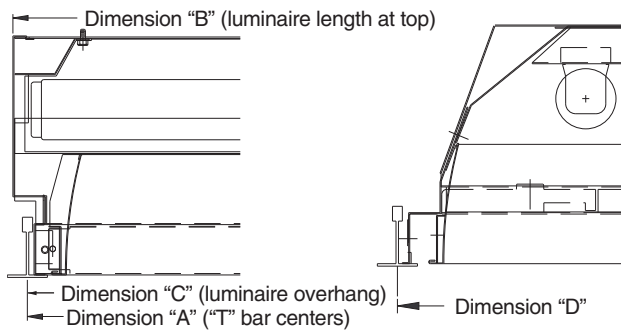


Metric Screw Slot Ceiling



Typical Metric ceiling grid & luminaire dimensions for Day-Brite's hard metric luminaires

Metric Grid Ceiling



IMPORTANT NOTE:

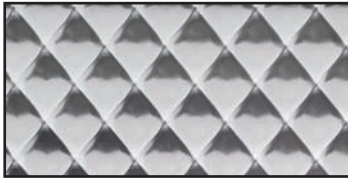
Metric recessed lighting fixtures used in metric T-bar ceilings cannot be mounted in continuous rows. Since recessed metric fixtures use standard lamps, the upper part of the luminaire body extends beyond the center lines of inverted grid "T's".

METRIC GRID DIMENSIONS				LUMINAIRE DIMENSIONS			
Metric (mm)		Inches		Metric (mm)		Inches	
Width "D"	Length "A"	Width "D"	Length "A"*	Length "B"	T-Bar Overhang "C"	Length "B"	T-Bar Overhang "C"*
300	x 600	11-13/16"	47-1/4"	1219	10	48"	3/8"
600	x 600	23-5/8"	23-5/8"	610	5	24"	3/16"
600	x 1200	23-5/8"	47-1/4"	1219	10	48"	3/8"

mm= millimeters

*= Approximate

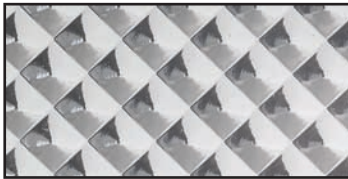
SPECIFICATION PRISMATIC LENSES BY DAY-BRITE



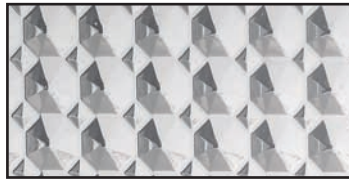
DB-01 (Lens Code 01)
 Extruded: Virgin Acrylic
 • Prism configuration: 5/16" square based indented (female) conical prisms in 45° diagonal orientation
 • Nominal thickness .095"
 • S/MH: 1.4-1.3



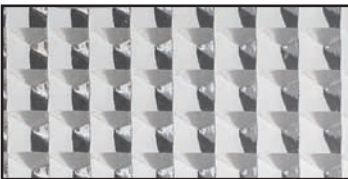
DB-21 (Lens Code 21)
 Extruded: Virgin Acrylic
 • Prism configuration: 3/16" square based indented (female) conical prisms in 45° diagonal orientation
 • Nominal thickness 1/8" (.125")
 • Nominal weight 6.2 oz./sq. ft.
 • S/MH: 1.4-1.3



DB-12 (Lens Code 12)
 Extruded: Virgin Acrylic
 • Prism configuration: 3/16" square based indented (female) conical prisms in 45° diagonal orientation
 • Nominal thickness 1/8" (.125")
 • Nominal weight 8 oz./sq. ft.
 • S/MH: 1.4-1.3



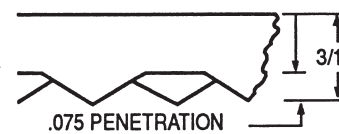
Vanguard Gridless Octex (Lens Code 56)
 Extruded: High Impact Acrylic Vandal Resistant
 • Prism configuration: Combination of major 8-sided indented (female) prisms, and smaller square prisms between the parallel sides of the progressing octagonal pattern
 • Nominal thickness 3/16" (.187")
 • Nominal weight 14.7 oz./sq. ft.
 • S/MH: 1.4-1.3



DB-19 (Lens Code 19)
 Extruded: Virgin Acrylic
 • Prism configuration: Prismatic pattern of 3/16" square base male cones running parallel and perpendicular to the length and width of the panel
 • Male prisms reduce brightness
 • Nominal thickness 5/32" (.156")
 • Nominal wt./sq. ft. is 10.9 oz.
 • S/MH: 1.4-1.3



MA-6 (Lens Code 06) Injection Molded
 Virgin Acrylic
 • Prism configuration: Projecting (male) prisms
 • Nominal thickness 3/16" (.187")
 • Nominal weight 14.5 oz./sq. ft.
 • S/MH: 1.4-1.3



LOUVER FINISHES



← actual lamp
 ← reflection

AL
 Semi-specular anodized aluminum. A low iridescence silver material with a relatively diffuse finish. This material is more tolerant of dirt and fingerprints than specular options, and scatters some light into the higher angles, creating more ceiling brightness. It is the least expensive louver material. This finish is offered on LP3 and 3" Paralouver products.



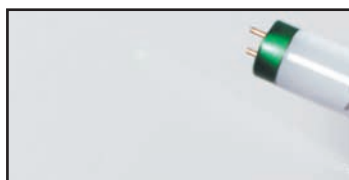
← reflection

SL
 Premium semi-specular anodized aluminum. A low iridescence silver material with a finish that is slightly more specular than the AL material. This material appears very similar to the AL material, but its somewhat less diffuse finish scatters less light into the higher angles. The SL material creates less ceiling brightness than the AL material (important in VDT applications), but significantly more than the FL material. This finish is offered on high shielding products (3" Paralouver, 4" Paralouver, most VDT products) where brightness control can be more important.



← reflection

FL
 Full-specular anodized aluminum. A low iridescence silver material with a specular (mirror-like) finish. This finish creates very little ceiling brightness, which is desirable in VDT-intensive areas. It is important to leave the louver bags on specular louvers until the latest possible time, as the specular finish of this material shows dirt and fingerprints. This is the most expensive louver finish, and is offered on most Paralouver and VDT products.



← actual lamp
 ← reflection

W
 White painted aluminum. An aluminum material painted with a high reflectance white powder coat. This creates a bright, diffuse louver that provides a high level of ceiling brightness. This finish is offered on LP3, Watt Watcher and 4" Paralouvers.