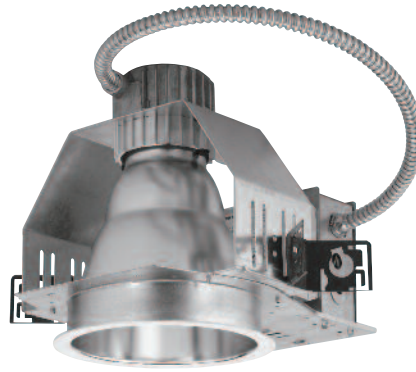


SPEX
8" HID Open
Vertical Downlight



STOCK

Will ship within 2 business days after order is processed.**

8" Spex Downlight

Catalog Number	Description
S8I00MHEDI7PEU	8" downlight, 100 watt metal halide ED17 (protected), electronic universal voltage 120-277

8" Spex Reflector

Catalog Number	Description
T8PMHCS	8" clear specular reflector, metal halide

Barhanger Accessories:

- Q1031 - 27" Flat Bar Hangers (pair)
- Q1032 - 26" C Channel (pair)
- Q1033 - 24" Expandable Bar Hangers (pair)

SAMPLE CATALOG NUMBER: S8I00MHEDI7PEU-T8PMHCS

See catalog or www.omegalighting.com or spec sheet SX3-6 for additional options and information on this product.
**For complete program details, see page 2 of the Omega Express Guide.