

**2 Lamp T8 U1-5/8" or 6"
3 Lamp T8 U1-5/8"
9 or 16 Cell**

APPLICATION

- For Surface Mounting Requirements with Parabolic louvered appearance and performance.
- Provides excellent control of light distribution with reduced direct glare and good shielding angles for superior visual comfort.
- May also be stem mounted (at four corners).

CONSTRUCTION/FINISH

- Housing is a one piece welded assembly for structural rigidity.
- Housing is multi-stage phosphate treated for maximum corrosion resistance and finish coat is high reflectance baked white enamel.
- Flat black finish inside perimeter reveal for floating door appearance.

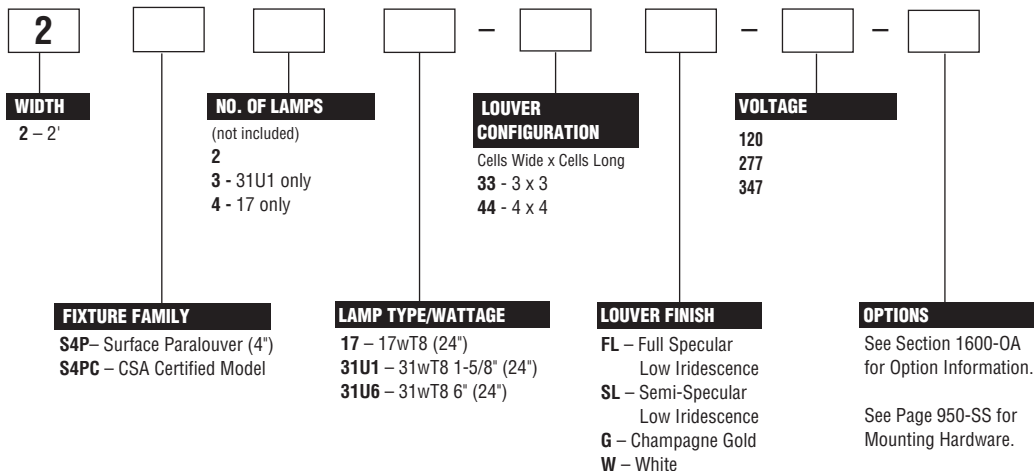
ELECTRICAL

- Class P, HPF, CBM certified ballasts comply with ©Federal Ballast Law (Public Law 100-357,1988).
- UL listed for direct mounting on low density ceilings and damp locations. C.S.A. certified optional.
- Self-contained fluorescent emergency power packs can be incorporated.

ENCLOSURES

- Parabolic-shaped louvers closely controlled for uniform low-brightness appearance, and interlocked to avoid vibration.
- Semi-specular low iridescence is standard, specular low iridescence, champagne gold and white louvers are optional.
- Lengthwise and crosswise shielding is 32° with 9 cell louver.
- Lengthwise and crosswise shielding is 40° with 16 cell louver.
- Black finish makes spring latches inconspicuous.
- Can be hinged and latched from either side.
- Shipped with plastic film to keep out construction dirt.

CATALOG NUMBER



NOTES:

- With generic Electronic Ballasts (Brand selected by Day-Brite)
Suffix Catalog # with **Ballast Quantity - / -EB Lamps Per Ballast.**

Example: -1/2-EB = One 2 Lamp Electronic Ballast.

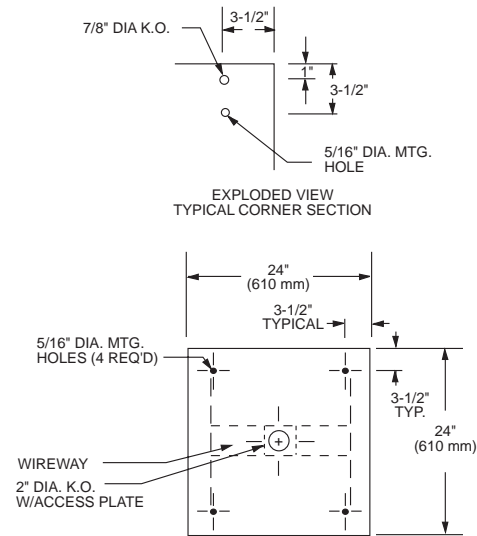
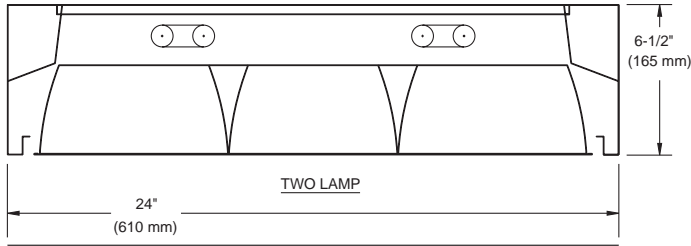
Example: -1/3-EB = One 3 Lamp Electronic Ballast.

Example: -1/21-EB = One 2 Lamp Electronic Ballast and One 1 Lamp Electronic Ballast.

2' x 2' 2 LAMP 9 OR 16 CELL



DIMENSIONS



PHOTOMETRIC DATA

CATALOG # 2S4P231U1-33SL-1/2-EB
TEST #15873 S/MH= 1.5

LAMPS = FBO 31
BALLAST = ELECTRONIC

INPUT WATTS = 57
BALLAST FACTOR = .92

LER = FP-60

COMPARATIVE YEARLY LIGHTING ENERGY COST PER 1000 LUMENS = \$4.00 BASED ON 3000 HRS. AND \$.08 PER KWH.

FIXTURE EFFICIENCY= 66.2%

CANDLEPOWER				
Angle	End	45	Cross	
0	1466	1466	1466	
5	1466	1460	1451	
10	1429	1431	1425	
15	1384	1384	1414	
20	1321	1335	1423	
25	1254	1299	1439	
30	1173	1275	1432	
35	1084	1228	1441	
40	986	1178	1449	
45	865	1130	1460	
50	725	1057	1378	
55	562	900	1022	
60	286	500	624	
65	83	103	87	
70	33	34	27	
75	15	16	13	
80	6	7	6	
85	2	2	2	

MAINTAINED ILLUMINATION TABLE- Square Feet/Fixture*

- 80-50-20 Reflectances (Ceiling-Wall-Floor)
- LLF = 0.76 2800 Lumens/Lamp very clean
- Room width divided by room height = 5 or more, 2 or 1

Fixture Size & # of Lamps	Room Width Room Height =	Approx. Area (sq. ft.) per Fixture			
		10 ft-c	30 ft-c	50 ft-c	70 ft-c
2' X 2' 2 Lamp	5 2 1	- - -	101 72 53	61 43 32	43 31 -

*Observe Fixture S/MH Requirements for Specific Applications

AVERAGE LUMINANCE CD/SQ.M WITH 2800 LUMEN LAMPS

ANGLE	END	45°	CROSS
45	4274	5584	7214
55	3423	5482	6226
65	686	852	719
75	202	216	175
85	80	80	80

TYPICAL V.C.P.'s Room Mounting Height

Room Size	Mounting Height			
	Lengthwise	8.5	10	Crosswise
30x30	85	79	81	75
40x40	89	84	87	81
60x30	90	85	87	82
60x60	92	88	90	85
100x100	96	93	94	91

COEFFICIENT OF UTILIZATION

p/c pcc pw	20			70			50		
	70	50	30	70	50	30	50	30	
RCR									
0	79	79	79	77	77	77	73	73	
1	73	70	68	71	69	68	67	65	
2	68	63	59	66	61	58	59	56	
3	63	56	52	60	55	51	54	50	
4	57	50	45	56	50	45	47	44	
5	53	45	40	52	45	39	42	39	
6	48	40	34	47	40	34	39	34	
7	45	36	32	44	35	30	34	30	
8	41	34	28	40	33	28	32	28	
9	39	30	26	38	29	25	29	25	
10	36	28	23	35	28	23	27	23	

LIGHT DISTRIBUTION

DEGREES	LUMENS	% LAMP	% FIXTURE
0-30	1143	20.4	30.8
0-40	1921	34.3	51.8
0-60	3532	63.1	95.3
0-90	3708	66.2	100.0

LLF = .76 LLF = LIGHT LOSS FACTOR LLF = LDD X LLD X BF LDD = VERY CLEAN 0.94 CLEAN 0.90
LLD = 0.88 @ 40% RATED LAMP LIFE BF = .92 ELECTRONIC BALLAST & T8 LAMP (RELAMP AT 70% LAMP LIFE)

PHOTOMETRIC DATA

CATALOG # 2S4P231U1-44SL-1/2-EB
TEST #15875 S/MH= 1.5

LAMPS = FBO 31
BALLAST = ELECTRONIC

INPUT WATTS = 57
BALLAST FACTOR = .92

LER = FP-52

COMPARATIVE YEARLY LIGHTING ENERGY COST PER 1000 LUMENS = \$4.62 BASED ON 3000 HRS. AND \$.08 PER KWH.

FIXTURE EFFICIENCY= 57.8%

CANDLEPOWER				
Angle	End	45	Cross	
0	1501	1501	1501	
5	1508	1493	1466	
10	1469	1434	1390	
15	1418	1348	1311	
20	1355	1248	1283	
25	1275	1175	1332	
30	1178	1143	1415	
35	1073	1134	1470	
40	947	1121	1447	
45	809	1076	1415	
50	620	947	1237	
55	314	576	731	
60	82	147	234	
65	29	50	87	
70	15	23	40	
75	7	11	18	
80	4	5	8	
85	1	2	3	

MAINTAINED ILLUMINATION TABLE- Square Feet/Fixture*

- 80-50-20 Reflectances (Ceiling-Wall-Floor)
- LLF = 0.76 2800 Lumens/Lamp very clean
- Room width divided by room height = 5 or more, 2 or 1

Fixture Size & # of Lamps	Room Width Room Height =	Approx. Area (sq. ft.) per Fixture			
		10 ft-c	30 ft-c	50 ft-c	70 ft-c
2' X 2' 2 Lamp	5 2 1	- - -	89 64 48	53 39 -	38 -

*Observe Fixture S/MH Requirements for Specific Applications

AVERAGE LUMINANCE CD/SQ.M WITH 2800 LUMEN LAMPS

ANGLE	END	45°	CROSS
45	3997	5317	6992
55	1913	3509	4453
65	240	413	719
75	94	148	243
85	40	80	120

TYPICAL V.C.P.'s Room Mounting Height

Room Size	Mounting Height			
	Lengthwise	8.5	10	Crosswise
30x30	92	88	87	82
40x40	95	92	90	87
60x30	95	92	91	88
60x60	96	94	93	90
100x100	98	97	96	94

COEFFICIENT OF UTILIZATION

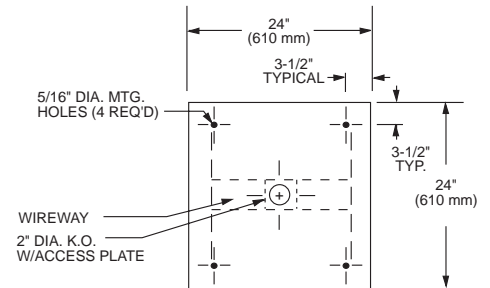
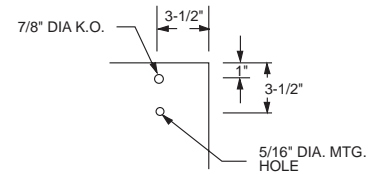
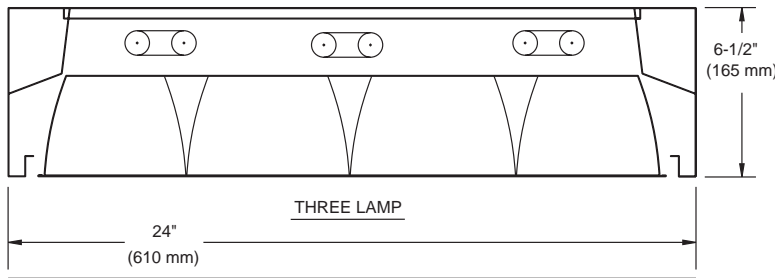
p/c pcc pw	20			70			50		
	70	50	30	70	50	30	50	30	
RCR									
0	68	68	68	67	67	67	64	64	
1	64	61	59	63	60	58	58	56	
2	59	56	53	57	55	52	53	51	
3	55	50	46	54	48	46	47	45	
4	51	45	40	50	44	40	42	40	
5	46	40	35	46	40	35	39	34	
6	44	36	32	42	35	32	34	32	
7	40	34	28	40	33	28	32	28	
8	38	30	26	36	29	26	29	26	
9	34	28	23	34	28	23	27	23	
10	33	26	22	33	26	22	25	20	

LIGHT DISTRIBUTION

DEGREES	LUMENS	% LAMP	% FIXTURE
0-30	1096	19.6	33.9
0-40	1841	32.9	56.9
0-60	3151	56.3	97.4
0-90	3235	57.8	100.0

LLF = .76 LLF = LIGHT LOSS FACTOR LLF = LDD X LLD X BF LDD = VERY CLEAN 0.94 CLEAN 0.90
LLD = 0.88 @ 40% RATED LAMP LIFE BF = 0.92 ELECTRONIC BALLAST & T8 LAMP (RELAMP AT 70% LAMP LIFE)

DIMENSIONS



PHOTOMETRIC DATA

CATALOG # 2S4P331U1-33SL-1/3-EB **LAMPS =** FBO 31 **INPUT WATTS =** 80
TEST # 15858 **S/MH=** 1.5 **BALLAST =** ELECTRONIC **BALLAST FACTOR =** .93

LER = FP-64

COMPARATIVE YEARLY LIGHTING ENERGY COST PER 1000 LUMENS = **\$3.75** BASED ON 3000 HRS. AND \$.08 PER KWH.

FIXTURE EFFICIENCY= 65.7%

CANDLEPOWER				
Angle	End	45	Cross	
0	2262	2262	2262	
5	2254	2274	2295	
10	2201	2302	2379	
15	2131	2322	2464	
20	2044	2322	2538	
25	1947	2312	2554	
30	1830	2271	2357	
35	1694	2106	2206	
40	1551	1874	2039	
45	1378	1676	1547	
50	1153	1311	1246	
55	906	947	1150	
60	444	572	809	
65	123	133	114	
70	51	44	36	
75	23	21	17	
80	10	10	8	
85	3	3	2	

MAINTAINED ILLUMINATION TABLE- Square Feet/Fixture*

- 80-50-20 Reflectances (Ceiling-Wall-Floor)
- LLF = 0.77 2800 Lumens/Lamp very clean
- Room width divided by room height = 5 or more, 2 or 1

Fixture Size & # of Lamps	Room Width Room Height =	Approx. Area (sq. ft.) per Fixture				
		10 ft-c	30 ft-c	50 ft-c	70 ft-c	100 ft-c
2' X 2'	5	-	-	92	65	46
3 Lamp	2	-	110	66	47	33
	1	-	82	49	35	-

*Observe Fixture S/MH Requirements for Specific Applications

AVERAGE LUMINANCE CD/SQ.M WITH 2800 LUMEN LAMPS				
ANGLE	END	45°	CROSS	
45	6809	8282	7644	
55	5519	5769	7005	
65	1017	1100	942	
75	310	283	229	
85	120	120	80	

TYPICAL V.C.P.'s				
Room Size	Mounting Height		Crosswise	
	Lengthwise	Crosswise	8.5	10
30x30	82	75	81	73
40x40	87	80	86	79
60x30	87	81	87	80
60x60	90	84	90	85
100x100	94	90	94	91

COEFFICIENT OF UTILIZATION

p/c pcc pw	20			70			50		
	70	50	30	70	50	30	50	30	
RCR	0	78	78	78	76	76	76	72	72
	1	72	70	68	71	68	67	67	65
	2	68	63	59	66	61	58	59	56
	3	63	56	52	60	56	52	54	51
	4	57	51	46	56	50	46	48	45
	5	54	46	40	52	45	40	44	40
	6	50	41	36	48	40	35	40	35
	7	46	38	33	45	38	33	36	32
	8	42	34	29	41	34	28	34	28
	9	40	32	27	39	32	27	30	26
	10	38	29	25	36	28	25	28	23

LIGHT DISTRIBUTION

DEGREES	LUMENS	% LAMP	% FIXTURE
0-30	1925	22.9	34.9
0-40	3197	38.1	57.9
0-60	5292	63.0	95.9
0-90	5518	65.7	100.0

LLF = .77 LLF = LIGHT LOSS FACTOR LLF = LDD X LLD X BF LDD = VERY CLEAN 0.94 CLEAN 0.90
 LLD = 0.88 @ 40% RATED LAMP LIFE BF = .93 ELECTRONIC BALLAST & T8 LAMP (RELAMP AT 70% LAMP LIFE)

PHOTOMETRIC DATA

CATALOG # 2S4P331U1-44SL-1/3-EB **LAMPS =** FBO 31 **INPUT WATTS =** 80
TEST # 15860 **S/MH=** 1.4 **BALLAST =** ELECTRONIC **BALLAST FACTOR =** .93

LER = FP-56

COMPARATIVE YEARLY LIGHTING ENERGY COST PER 1000 LUMENS = **\$4.29** BASED ON 3000 HRS. AND \$.08 PER KWH.

FIXTURE EFFICIENCY= 57.7%

CANDLEPOWER				
Angle	End	45	Cross	
0	2353	2353	2353	
5	2342	2345	2342	
10	2285	2291	2276	
15	2204	2195	2199	
20	2110	2085	2217	
25	1990	2026	2237	
30	1841	1979	2151	
35	1681	1858	2100	
40	1499	1696	2001	
45	1286	1532	1704	
50	988	1209	1448	
55	505	738	925	
60	113	184	281	
65	46	71	113	
70	22	32	51	
75	11	15	24	
80	5	7	11	
85	1	2	3	

MAINTAINED ILLUMINATION TABLE- Square Feet/Fixture*

- 80-50-20 Reflectances (Ceiling-Wall-Floor)
- LLF = 0.77 2800 Lumens/Lamp very clean
- Room width divided by room height = 5 or more, 2 or 1

Fixture Size & # of Lamps	Room Width Room Height =	Approx. Area (sq. ft.) per Fixture				
		10 ft-c	30 ft-c	50 ft-c	70 ft-c	100 ft-c
2' X 2'	5	-	134	81	58	40
3 Lamp	2	-	99	59	42	-
	1	-	74	45	32	-

*Observe Fixture S/MH Requirements for Specific Applications

AVERAGE LUMINANCE CD/SQ.M WITH 2800 LUMEN LAMPS				
ANGLE	END	45°	CROSS	
45	6354	7570	8420	
55	3076	4496	5635	
65	380	587	934	
75	148	202	324	
85	40	80	120	

TYPICAL V.C.P.'s				
Room Size	Mounting Height		Crosswise	
	Lengthwise	Crosswise	8.5	10
30x30	89	85	85	79
40x40	93	88	89	84
60x30	93	89	90	85
60x60	95	91	91	87
100x100	97	95	95	92

COEFFICIENT OF UTILIZATION

p/c pcc pw	20			70			50		
	70	50	30	70	50	30	50	30	
RCR	0	68	68	67	67	67	64	64	
	1	64	61	60	63	60	59	58	
	2	59	56	53	58	55	52	53	
	3	56	51	46	54	50	46	47	
	4	52	46	41	50	45	40	44	
	5	47	40	36	46	40	36	40	
	6	44	38	33	42	36	33	35	
	7	40	34	29	40	34	29	33	
	8	39	32	27	38	30	27	29	
	9	35	28	25	34	28	25	28	
	10	34	27	23	33	27	23	26	

LIGHT DISTRIBUTION

DEGREES	LUMENS	% LAMP	% FIXTURE
0-30	1798	21.4	37.1
0-40	2959	35.2	61.1
0-60	4736	56.4	97.8
0-90	4844	57.7	100.0

LLF = .77 LLF = LIGHT LOSS FACTOR LLF = LDD X LLD X BF LDD = VERY CLEAN 0.94 CLEAN 0.90
 LLD = 0.88 @ 40% RATED LAMP LIFE BF = 0.93 ELECTRONIC BALLAST & T8 LAMP (RELAMP AT 70% LAMP LIFE)

2' x 2'