

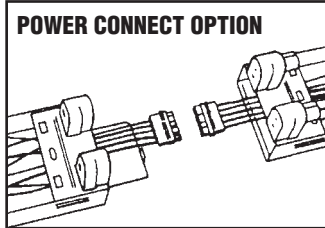
**2 Lamp
T8 or T12**

CONSTRUCTION/FINISH

- A suspended luminaire with approximately 10% uplight.
- Housing is multi-stage phosphate treated for maximum corrosion resistance and finish coat is high reflectance baked white enamel.
- Contemporary architectural styling.
- Suitable for unit or row suspension mounting.

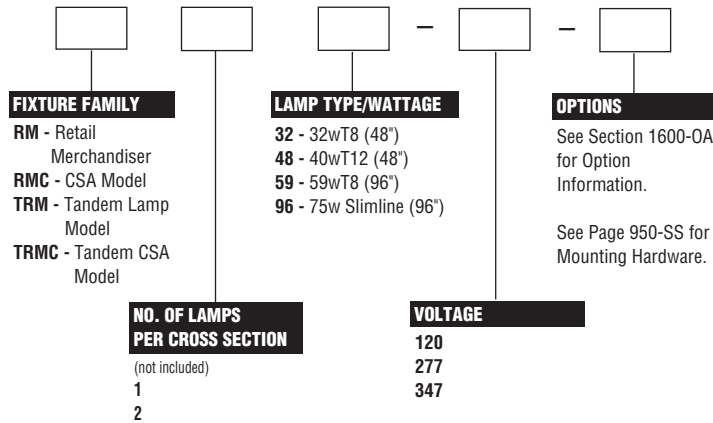
ELECTRICAL

- Class P, HPF, CBM certified ballasts comply with ©Federal Ballast Law (Public Law 100-357, 1988).
- UL listed for damp locations.
- Self-contained fluorescent emergency power packs can be incorporated. UL listed for dry location.



- A Power/Connect Harness option offering factory installed pre-wired branch circuit wiring permits fluorescent fixtures to be mounted in rows and electrically plugged together quickly and easily.

CATALOG NUMBER



NOTES:

- With generic Electronic Ballasts (Brand selected by Day-Brite)
 Suffix Catalog # with- **Ballast Quantity** - / -**EB** **Lamps Per Ballast.**

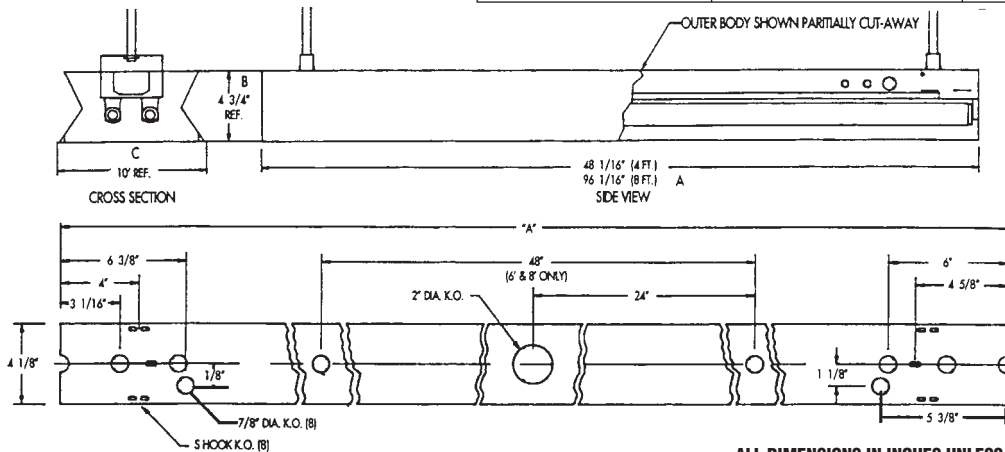
Example: -1/2-EB = One 2 Lamp Electronic Ballast.

RETAIL MERCHANDISER



DIMENSIONS

DIM "A"		DIM "B"		DIM "C"	
4' Fixture	48 1/16"	4' Fixture	4 3/4"	4' Fixture	10"
8' Fixture	96 1/16"	8' Fixture	4 3/4"	8' Fixture	10"



ALL DIMENSIONS IN INCHES UNLESS OTHERWISE SPECIFIED

PHOTOMETRIC DATA

CATALOG # TRM232-1/4-EB
TEST #ITL42416

LAMPS = F32 T8
BALLAST = ELECTRONIC

INPUT WATTS = 128
BALLAST FACTOR = .91

LER = FP-72

COMPARATIVE YEARLY LIGHTING ENERGY COST PER 1000 LUMENS = \$3.33 BASED ON 3000 HRS. AND \$.08 PER KWH.

FIXTURE EFFICIENCY = 87.3%

CANDLEPOWER			
Angle	End	45	Cross
0	2654	2654	2654
5	2643	2648	2648
15	2543	2609	2645
25	2365	2535	2674
35	2106	2430	2704
45	1780	2300	2598
55	1380	2033	2156
65	927	1489	1433
75	469	759	545
85	84	107	111
95	17	11	8
105	72	48	37
115	124	72	66
125	170	235	119
135	197	385	340
145	227	233	478
155	260	98	244
165	267	241	114
175	277	269	286

MAINTAINED ILLUMINATION TABLE- Square Feet/Fixture*

- 80-50-20 Reflectances (Ceiling-Wall-Floor)
- LLF = 0.75 2900 Lumens/Lamp very clean
- Room width divided by room height = 5 or more, 2 or 1

Fixture Size & # of Lamps	Room Width Room Height =	Approx. Area (sq. ft.) per Fixture				
		10 ft-c	30 ft-c	50 ft-c	70 ft-c	100 ft-c
1'x8'	5	-	-	154	110	77
4 Lamp T8	2	-	-	102	73	51
Electronic	1	-	121	73	52	33

*Observe Fixture S/MH Requirements for Specific Applications

AVERAGE LUMINANCE CD/SQ.M WITH 2900 LUMEN LAMPS

ANGLE	END	45°	CROSS
45	4563	5896	6660
55	4361	6424	6813
65	3975	6384	6144
75	3282	5311	3814
85	1742	2219	2301

TYPICAL V.C.P.'s

Room Size	Mounting Height			
	Lengthwise		Crosswise	
	8.5	10	8.5	10
30x30	35	37	34	34
40x40	36	36	36	35
60x30	40	40	39	38
60x60	37	36	37	36
100x100	41	40	41	39

COEFFICIENT OF UTILIZATION

p/c pcc pw RCR	20			70			50		
	70	50	30	70	50	30	50	30	
0	102	102	102	98	98	98	93	93	
1	93	89	84	90	85	82	81	78	
2	83	77	70	81	73	68	69	65	
3	76	67	59	72	65	57	60	55	
4	68	58	51	67	56	50	54	47	
5	64	52	44	60	51	42	47	40	
6	57	46	39	56	45	38	42	35	
7	54	41	34	52	40	34	39	32	
8	50	38	30	47	36	29	34	28	
9	46	37	28	45	34	27	32	26	
10	44	32	28	41	30	28	29	23	

LIGHT DISTRIBUTION

DEGREES	LUMENS	% LAMP	% FIXTURE
0-30	2159	18.6	21.3
0-40	3675	31.7	36.3
0-60	7082	61.1	69.9
0-90	9228	79.6	91.1
90-180	897	7.7	8.9
0-180	10125	87.3	100.0

LLF = .75 LLF = LIGHT LOSS FACTOR LLL = LDD X LLD X BF LDD = VERY CLEAN 0.94 CLEAN 0.90
LLD = 0.88 @ 40% RATED LAMP LIFE BF = 0.91 ELECTRONIC BALLAST & T8 LAMP (RELAMP AT 70% LAMP LIFE)

947-SS

DAY-BRITE LIGHTING
776 South Green Street • Tupelo, Mississippi 38804 • PH: (662) 842-7212 • FAX: (662) 841-5501
CANADIAN DIVISION
189 Bullock Drive • Markham, Ontario L3P 1W4 • PH: (905) 294-9570 • FAX: (905) 294-9811

©2000 DAY-BRITE LIGHTING
HOT 03-00-20M
DAY-BRITE RESERVES THE RIGHT TO
MAKE CHANGES WITHOUT NOTICE.

Day-Brite | Capri | Omega
Genlyte Thomas Group