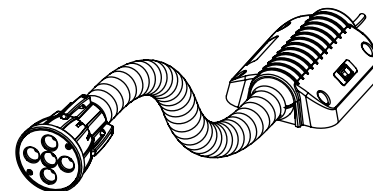


AL-12070.2

Aisle Lighting

LED Dock Light Industrial Dock Light



application

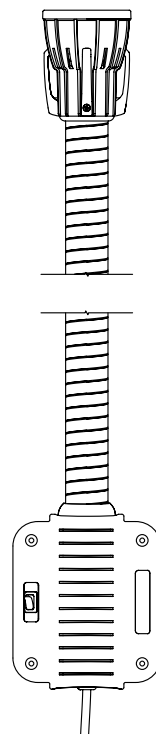
- An energy saving alternative to the traditional 150 Watt PAR unit.
- Consumes only 15 Watts and save 135 Watts when compared to the 150 Watt PAR dock light.

construction & features

- Die cast aluminum head assembly.
- All metal construction for extended life.
- Flexible arm is infinitely adjustable and almost indestructible.
- Painted "safety yellow" after fabrication for high visibility.
- Shipped fully assembled with a replaceable LED module included.

electrical

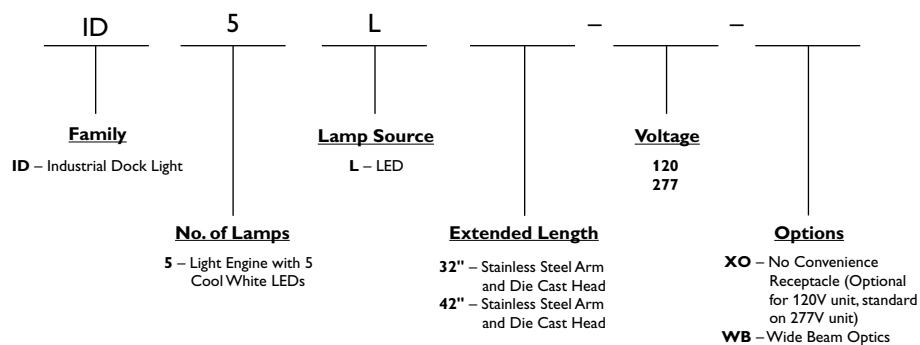
- Certified by ETL to meet UL 153 and CSA C22.2 No. 12 standards.
- Electronic LED driver.
- Suitable for damp locations.
- Meets NEC and OSHA general safety requirements.



Specifier's Reference

Project
Type
Model No.
Comments

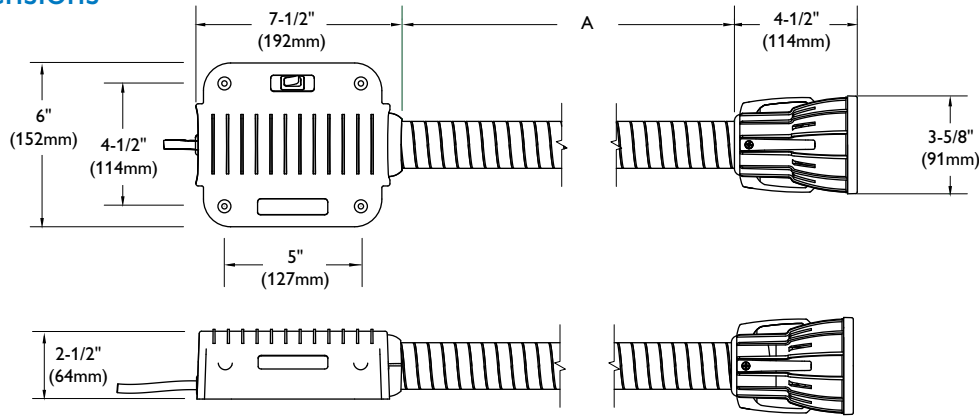
Green Choice: ID5L32-120



AL-12070.2

dimensions

LED Dock Light



LED Dock Light Dimensions		
	32"	42"
A	28-1/8"	38-1/8"

photometry

LED Dock Light

Catalog No. ID5L32-120
 Test No. ITL62971

Footcandles at 52.8'

2.4	2.9	3.5	3.9	3.9	3.5	2.9	2.4
3.0	3.8	4.6	5.3	5.3	4.7	3.8	3.1
3.6	4.6	5.6	6.3	6.3	5.7	4.6	3.7
4.0	5.3	6.5	7.2	7.3	6.5	5.3	4.1
4.1	5.2	6.4	7.2	7.2	6.5	5.3	4.1
3.6	4.6	5.7	6.5	6.5	5.8	4.7	3.7
2.9	3.7	4.4	5.0	5.0	4.5	3.7	3.0
2.2	2.7	3.3	3.6	3.7	3.3	2.8	2.3
1.7	2.0	2.3	2.5	2.5	2.3	2.0	1.7

Footcandles at 26'

1.8	2.1	2.1	1.9	1.5	1.2	1.0	0.9
3.4	4.6	4.8	3.7	2.5	1.7	1.2	1.0
7.1	10.6	11.3	8.0	4.6	2.4	1.5	1.1
12.1	19.7	21.0	14.0	7.2	3.4	1.8	1.2
15.5	24.9	26.5	17.9	8.4	3.7	1.9	1.2
12.0	19.5	20.7	13.8	6.9	3.3	1.8	1.2
6.7	10.0	10.6	7.6	4.4	2.5	1.6	1.1
3.4	4.3	4.5	3.6	2.6	1.7	1.3	1.0
1.9	2.1	2.2	2.0	1.6	1.3	1.1	0.9

Footcandles at 1'

0.1	0.2	0.1	0.1	0.1	0.0	0.0	0.1
0.4	0.4	0.2	0.1	0.1	0.0	0.0	0.1
1.9	1.3	0.6	0.2	0.1	0.1	0.0	0.1
11.7	5.6	1.6	0.5	0.2	0.1	0.1	0.1
131	18.7	3.1	0.7	0.2	0.1	0.1	0.1
99.0	17.4	3.0	0.7	0.2	0.1	0.1	0.1
9.4	4.9	1.4	0.4	0.1	0.1	0.0	0.1
1.4	1.1	0.5	0.2	0.1	0.1	0.0	0.1
0.4	0.3	0.2	0.1	0.1	0.1	0.0	0.1



©2010 Philips Day-Brite
 All rights reserved.

776 South Green Street • Tupelo, MS 38804
 p. 800.234.1890 • f. 662.841.5501
 Canadian Division
 189 Bullock Drive • Markham, Ontario L3P 1W4
 p. 905.294.9570 • f. 905.294.9811

Contact Factory for Additional Configurations.
 Specifications are subject to change without notice.