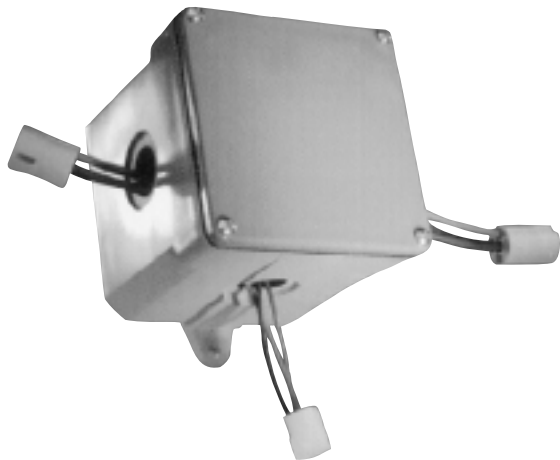
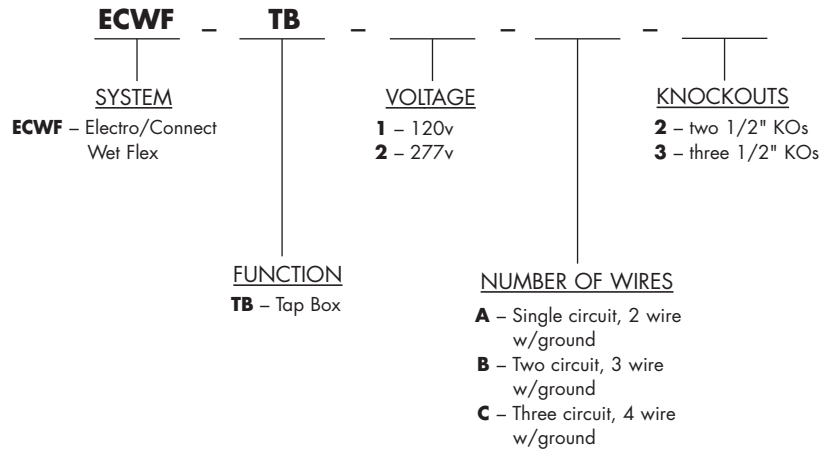


TAP BOX



SAMPLE CATALOG NUMBER: ECWF-TB-1-A



APPLICATION

- The Electro/Connect Wet Flex Tap Box is used as a splice point between the E/C Wet Flex Extender Cables and the E/C Wet Flex Cord Drops. All connections are made on the exterior of the box so there is no need to access the box.
- Tap Box with 2 KOs to be used on the last luminaire in the run.

CONSTRUCTION

- Rated for use on 20 ampere branch circuits.
- Manufactured from Sceptre 4" x 4" box or equivalent.
- All conductors are #12 AWG stranded copper, type THHN insulation with 90°C rating.
- Features 3 counter-bored 1/2" KOs to provide tight seal.
- IBEW assembled, UL listed and labeled.
- Meets requirements of NEMA-12.

Job Name:

Catalog Number:

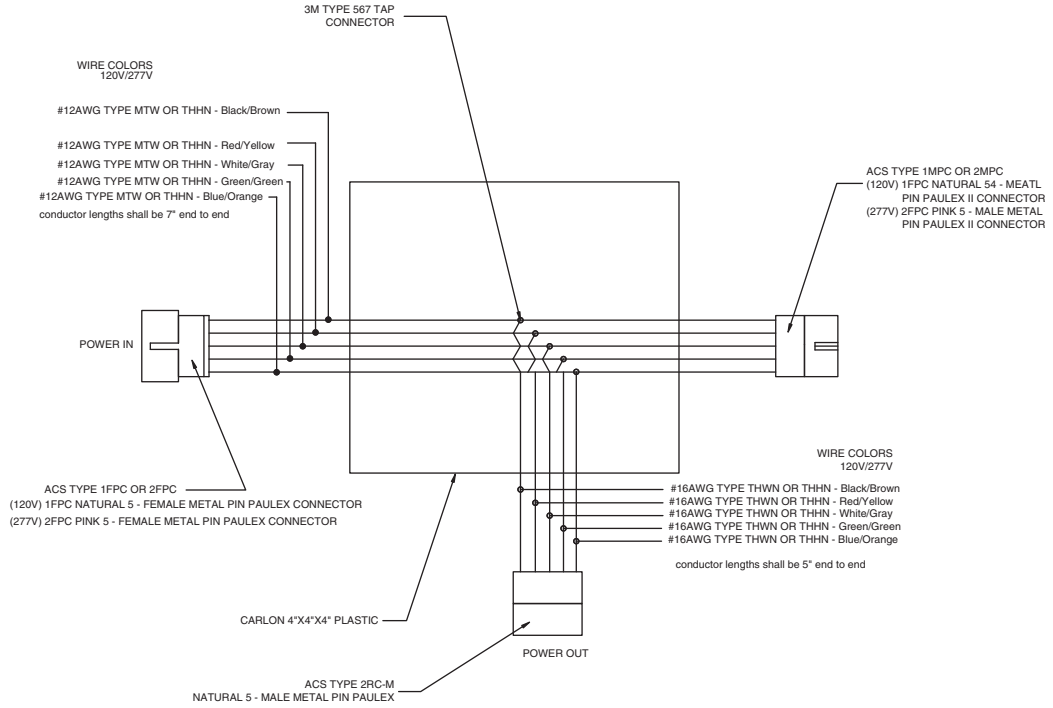
Type:

Notes:

ecw4020

PRODUCT DETAILS

3 KO DIAGRAM



2 KO DIAGRAM

