

JOB NAME _____

FUSING / HOOK, CORD AND PLUG ASSEMBLIES

TYPE _____



Day-Brite Lighting

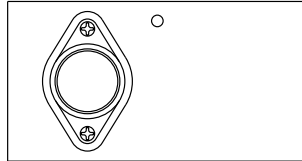
ORDERING MATRIX



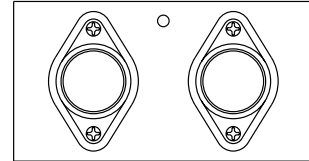
FAMILY

SF - Single Fuse Holder
DF - Double Fuse Holder

SF



DF



Notes:

Type KTK fuse required. Fuses are not supplied unless specified.

ORDERING MATRIX



FAMILY

HP - Hook, Cord and Plug



VOLTAGE

12 - 120
25 - 208, 240
27 - 277
48 - 480

-



LENGTH

3 - 3' Cord
6 - 6' Cord
10 - 10' Cord



OPTIONS

G - Grommeted

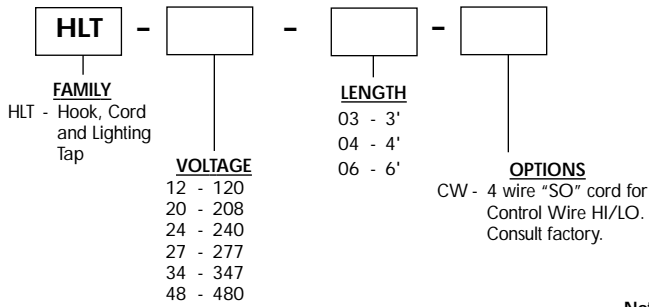
PRODUCT FEATURES

1. NEMA locking plug. 15A plug is standard for 120-277V. 20A plug is standard for 480V.
2. 16/3 Type SO Cord
3. Die cast aluminum hook with 3/4" threaded nipple.



FUSING / HOOK, CORD AND PLUG

ORDERING MATRIX



Notes:
Consult Electro/Connect Modular Wiring
System literature for complete system
information.

PRODUCT FEATURES

1. Electro/Connect Adapter is zinc plated 18 gauge steel.
2. 12/3 Type SEO Cord.
3. Die cast aluminum hook with 3/4" threaded nipple.



Visit our web site at www.daybritelighting.com

776 South Green Street Tupelo, MS 38804 Phone: 662-842-7212 Fax: 662-841-5501

IA-18020

189 Bullock Drive Markham, Ontario Canada L3P 1W4 Phone: 905-294-9570 Fax: 905-294-8911
Day-Brite Lighting reserves the right to make changes without notice. ©September 2001. DL2.5M0901
Day-Brite Lighting is a Genlyte Thomas Group.

 **Day-Brite Lighting**