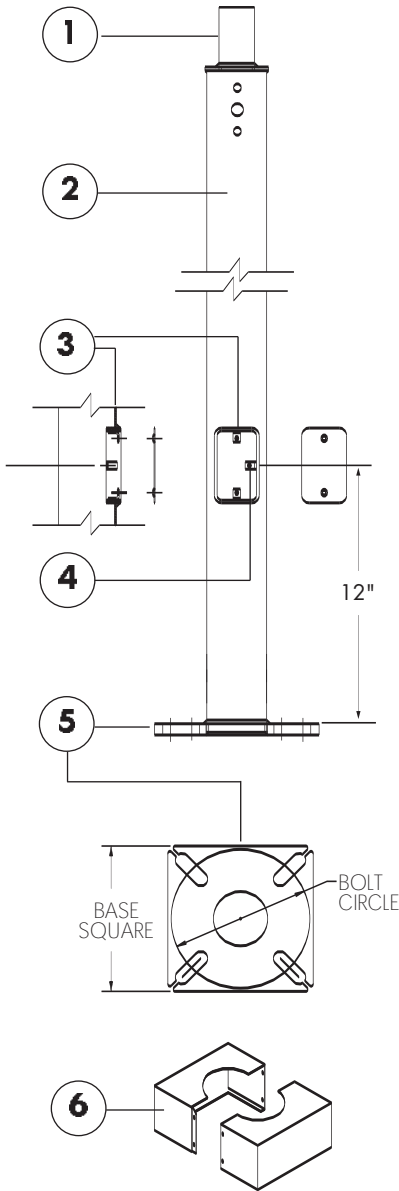


PRODUCT FEATURES



- 1. Mounting**—The poles shall have the option of drilling on one to four sides for arm mounted luminaires or it shall have a 2-3/8" tenon.
- 2. Shaft**—The shaft shall be made from a single ply steel sheet with a minimum yield strength of 42,000 psi. The steel shall be formed into a tubular shape with one or more longitudinal welds; no welded splices shall be permitted.
- 3. Handhole**—A peripherally reinforced handhole shall have nominal dimensions of 2.5"x 5" for all shafts. Cover shall be attached with back-bar and screw.
- 4. Grounding**—A ground lug shall be located immediately inside the handhole and includes a 0.5"x13" UNC hex head bolt and nut.
- 5. Anchor Base**—Anchor base shall be fabricated from steel plate that meets either ASTM A36 or ASTM A572. The plate shall be integrally welded to the pole bottom with either a telescopic weld or full-penetration weld with a back-up-bar.
- 6. Base Cover**—Base cover shall be of two piece ABS plastic construction, finished to the same color as pole, and furnished with appropriate hardware.
- 7. Anchor Bolts**—Anchor bolts shall be made of steel that meets the requirements of ASTM F1554, Grade 55. The top 12" shall be galvanized per ASTM A-153, and at least 6" of thread. Each anchor bolt shall be supplied with two flat washers and two hex nuts.

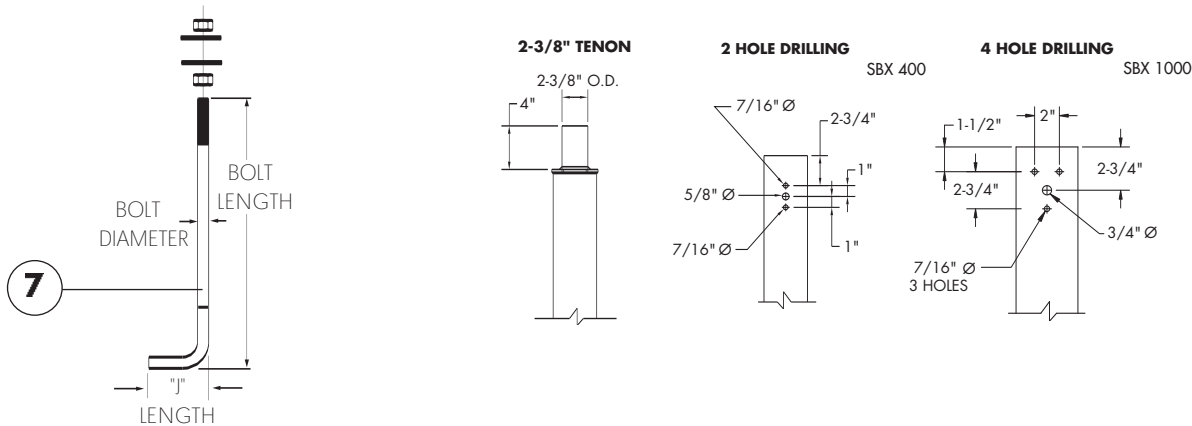
Welding—All welding shall be performed by AWS (American Welding Society) certified welders and all welds comply with the most recent edition of the ASW Structural Welding Code.

Finish—The pole shall be finished in a powder process. The powder coating shall be a urethane polyester powder formulated to match the luminaire finish.

Inspection and Packaging—All poles shall be thoroughly inspected and packaged to arrive at their destination safe and without damage.

WARNING: The information contained within this document is intended as a general guideline only. The customer is solely responsible for proper selection of the pole, luminaire, accessories, and foundation under the given site conditions and intended usage. The mounting of any items to the pole, in addition to the luminaire, will dramatically impact the EPA load on that pole. It is strongly recommended that a qualified professional be consulted to analyze the loads given the user's specific needs to ensure proper selection of the pole, luminaire, accessories, and foundation. Day-Brite Lighting and Genlyte Thomas Group, LLC assume no responsibility for such proper analysis or product selections. Failure to ensure proper site analysis, pole selection, loads and installation can result in pole failure, leading to serious injury or property damage.

MOUNTING CONFIGURATION



Visit our web site at www.dcolighting.com or www.nitebrites.com

776 South Green Street Tupelo, MS 38804 Phone: 662-842-7212 Fax: 662-841-5501

PA-46079.1

189 Bullock Drive Markham, Ontario Canada L3P 1W4 Phone: 905-294-9570 Fax: 905-294-8911
Day-Brite Lighting reserves the right to make changes without notice. October 2006. HT2.5M1006
Genlyte Thomas Group, LLC©

 **Day-Brite® Lighting**
a Genlyte company