

NL71CX

Compact Fluorescent Step Light New Construction - IC Rated

Catalog Number: _____

Type: _____

Project: _____



Description

Recessed louver step or corridor light. For interior use only. May be installed in direct contact with thermal insulation.

Features

- White enamel finish.
- Die-formed 20 gauge face plate.
- IC rated for use in direct contact with thermal insulation.
- Thermal protection standard.
- U.L. listed for Damp Locations.

CATALOG SYSTEM AND OPTIONS

SAMPLE CATALOG NUMBER: NL71CX120V

Housing	Voltage
NL71CX	120V
CFT7W/G23	277V
CFT9W/G23	

General Notes:

See Lamps listed under housing for lamp compatibility.

SPECIFICATIONS

1. **Housing** - Shallow housing with white enameled reflector of pre-painted 16 gauge die-formed steel. May be installed in direct contact with thermal insulation.

2. **Socket** - One horizontally mounted plug-in socket for 7 or 9 watt compact fluorescent lamp.

3. **Bar Hangers** - Furnished with patented BH1 bar hangers that telescope from 14" to 24". Vertical design of interlocking bar hangers prevents sagging even at full 24" extension. Bar hangers can be locked into position.

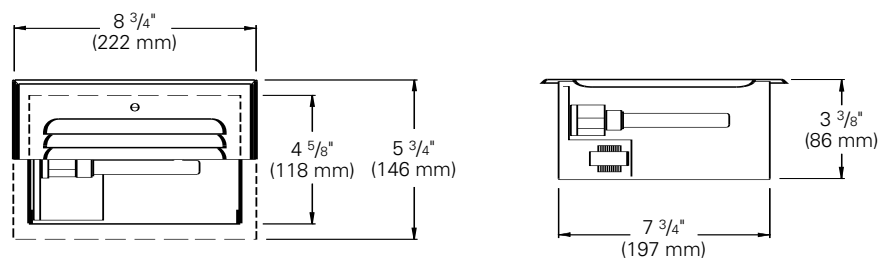
4. **Trim** - Die-formed 20 gauge louvered face plate with slotted round head screws, painted white. White enamel finish.

5. **Ballast** - One Type 1 Class P encapsulated normal power factor ballast which will operate single 7 or 9 watt lamp. Specify 120 or 277 volt primary.

6. **Thermal Protection** - Standard thermal protection standard with class P electronic ballast. Ballast operates voltage from 120V through 277V. Minimum starting temp is 0° F.

7. **c/UL Listed** - for Damp Locations. IBEW union made.

DIMENSIONS



REV. 09/05

Capri Lighting reserves the right to make changes without notice. ©2005

RC2-20

CAPRI LIGHTING:
776 South Green St., Tupelo, MS 38804
Phone 662.842.7212 FAX 662.841.5501
www.caprilighting.com

CANADIAN DIVISION:
189 Bullock Drive, Markham, Ontario, Canada L3P 1W4
Phone 905.294.9570 FAX 800.268.0003

capri
LIGHTING