

OM61H42PLTFLD/FLR

6" Decorative Trim Horizontal Downlights

CAT. NO:

TYPE:

PROJECT:

PRODUCT INFORMATION

Applications

A tempered soda lime glass trim features a silk screened center disk with a solid clear outer ring. The trim is placed in a fixed position with brushed aluminum spacers to eliminate direct lamp image.

Specifications

1. **Ballast** - One (1) Type 1 Class P, high power factor universal voltage electronic compact fluorescent ballast. Offer both 1 or 2 lamp operation for 120 through 277 volt input voltage.

	(2)13W 120V	13W 277V	(1)18W 120V	18W 277V	(1)26W 120V	26W 277V	(1)42W 120V	42W 277V
Line current amps	.27	.12	.19	.08	.25	.11	.42	.18
Input watts including ballast loss	32	32	22	22	28	28	48	48
Ballast factor	.98+	.98+	1.00	1.00	.98+	.98+	.98+	.98+
Minimum starting temperature	0°F	0°F	0°F	0°F	0°F	0°F	0°F	0°F

2. **Mounting pan** - Precision die-stamped 16 gauge galvanized steel mounting pan and yoke assembly. Accommodates ceiling materials up to 1-3/8" thick.

3. **Installation** - Mounting pan has pre-installed C-channel with vertical and horizontal adjustments. Ballast, junction box and mounting brackets are accessible from below ceiling. For 27" flat bar hanger pair, specify Q1031 accessory, ordered separately.

4. **Reflector** - Precision spun .050 aluminum one piece reflector, self flanged with clear specular low iridescent Alzak finish. Standard flat flange is polished with matching reflector finish.

5. **Decorative Trim** - Glass: 1/4" thick tempered trim with silk screened ceramic glaze.

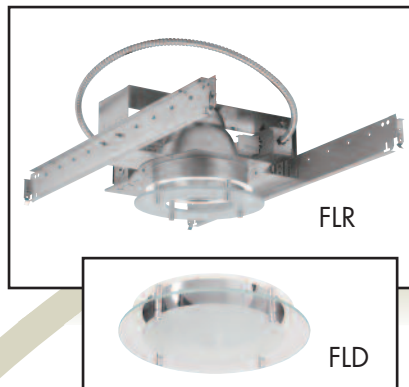
6. **Sockets** - CFM42W/GX24q, CFM32W/GX24q, CFM26W/GX24q, CFM18W/GX24q, CFQ26W/G24q, CFQ18W/G24q, CFQ13W/G24q horizontally mounted, 4 pin plug-in type. Socket assembly rotates 90° to allow for alignment of lamps and reflector within fixture, for design flexibility. (Lamps ordered separately.)

7. **Junction box** - Extra large 43.75-cubic inch 16 gauge galvanized steel with snap-on covers and ground wire riveted to frame. Approved for through wiring with up to 8 #12 AWG conductors.

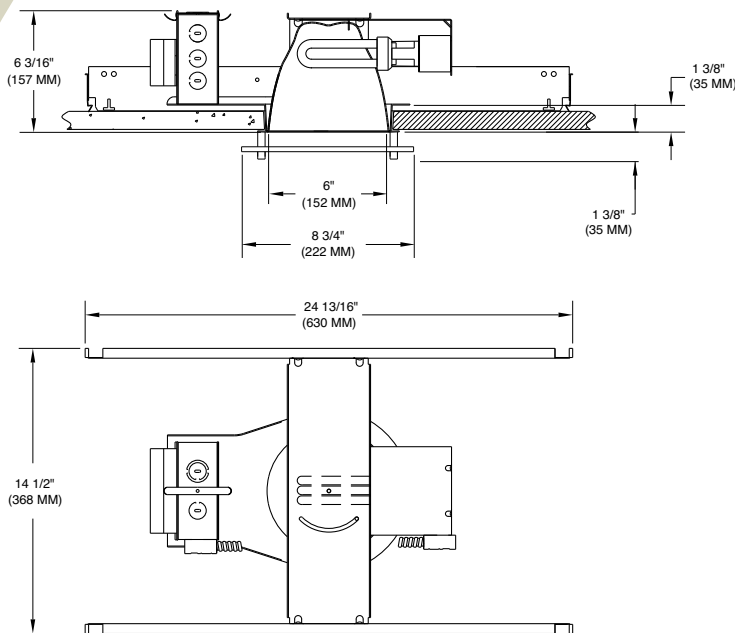
8. **Optional emergency system** - Emergency system includes battery, electronic circuitry, charger and test/monitor plate with test switch and charging indicator light. Test/monitor plate may be installed in the ceiling near fixture or other remote location. Operates appropriate lamp wattage for a minimum of 90 minutes following power failure. Emergency system complies with NFPA life safety code, OSHA and NEC. Suitable for dry locations.

9. **U.L. Listed** - For use in damp locations and approved for Through Branch Circuit Wiring. I.B.E.W. union made.

Canadian Specifications may vary from these shown, consult Canadian Division.



6



CATALOG SYSTEM AND OPTIONS

EXAMPLE OF COMPLETE CATALOG NUMBER: **OM61H42PLTFLD-CSFF-120/277**

OMEGA Aptr.	No. of Lamps	Lamps Position	Lamp (by others)	Trim Type (required)	Reflector Finish	Options	Supply Voltage
OM6	1	H	42 PLT Triple Tube CFL	FLD Floating Luminous Disk	CSFF Clear Specular Finish Flange	EM Emergency	120/277
	2 ¹	Horizontal	32 PLT Triple Tube CFL	FLR Floating Luminous Ring	FCSFF Faceted Clear Specular Finish Flange	FZ120 Fusing	347 *
			26 PLT Triple Tube CFL		FCSSFF Faceted Clear Semi Spec Finish Flange	FZ277 Fusing	
			18 PLT Triple Tube CFL		FHZ Faceted Haze	FZ347 Fusing	
			26 QPL Quad CFL			CP Chicago Plenum	
			18 QPL Quad CFL			Q1031 Flat Bar Hangers	
			13 QPL Quad CFL			SA6 Sloped Ceiling Adpt.	
						DL1 Dimming, Lutron Compact SE, 120v	
						DL2 Dimming, Lutron Compact SE, 277v	
						DX1 Dimming, Advance Mark X, 120v	
						DX2 Dimming, Advance Mark X, 277v	



FIVE YEAR
Warranty

1. 2 lamp configuration available with QPL lamps only.

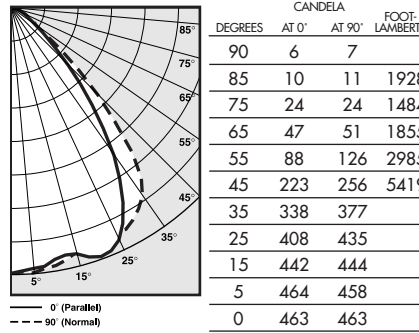
OM61H32PLTFLD-CSFF Photometric Data

Decorative Glass Lens with Floating Luminous Disk

Report Number: 21431
 Lamp: (1) CFM32W
 Total Lumens: 2400
 Fixture Efficiency: = 53.1%
 IES File: F21431.IES
 S/MH Ratio = 1.2, 1.3
 Beam Angle: 91.94

LIGHTING PERFORMANCE DATA		
CEILING HEIGHT* (FT.)	INITIAL FOOTCANDLES	BEAM DIAMETER (FT.-IN.)
8	15.3	11-5
10	8.2	15-6
12	834	19-8
14	3.5	23-10
16	2.5	27-11

DISTRIBUTION CURVE



COEFFICIENTS OF UTILIZATION ZONAL CAVITY METHOD

Effective Floor Cavity Reflectance 0.20

RC	80		70		50	
	50	30	50	30	50	30
RW	50	30	50	30	50	30
0	47	47	46	46	44	44
1	42	40	41	40	40	39
2	38	35	38	35	35	34
3	34	32	34	30	33	30
4	30	28	30	28	29	27
5	28	25	28	25	27	23
6	26	23	25	22	25	22
7	23	20	23	20	23	20
8	22	19	20	17	20	17
9	20	17	20	17	19	17
10	19	16	17	16	17	14

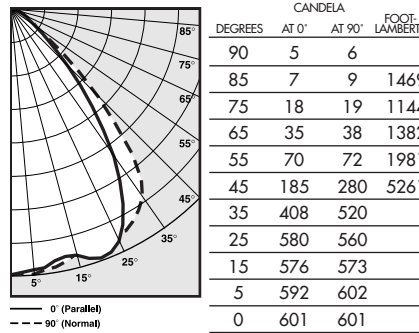
OM61H32PLTFLR-CSFF Photometric Data

Decorative Glass Lens with Floating Luminous Ring

Report Number: 21432
 Lamp: (1) CFM32W
 Total Lumens: 2400
 Fixture Efficiency: = 45.0%
 IES File: F21432.IES
 S/MH Ratio = 1.2, 1.3
 Beam Angle: 84.17

LIGHTING PERFORMANCE DATA		
CEILING HEIGHT* (FT.)	INITIAL FOOTCANDLES	BEAM DIAMETER (FT.-IN.)
8	19.9	9-11
10	10.7	13-7
12	6.7	17-2
14	4.5	20-9
16	3.3	24-5

DISTRIBUTION CURVE



COEFFICIENTS OF UTILIZATION ZONAL CAVITY METHOD

Effective Floor Cavity Reflectance 0.20

RC	80		70		50	
	50	30	50	30	50	30
RW	50	30	50	30	50	30
0	54	54	52	52	50	50
1	48	46	47	46	46	45
2	44	41	42	40	41	40
3	40	36	39	36	38	35
4	35	33	35	33	34	32
5	33	29	33	29	32	28
6	30	27	29	27	28	27
7	28	25	28	25	27	23
8	26	23	26	23	25	22
9	23	20	23	20	23	20
10	22	19	22	19	22	19

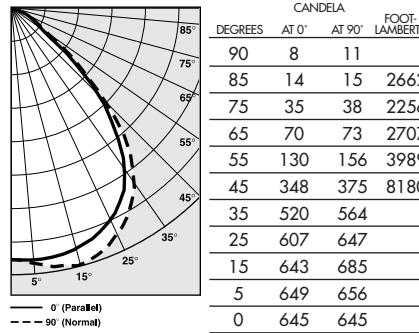
OM62H26QPLFLD-CSFF Photometric Data

Decorative Glass Lens with Floating Luminous Disk

Report Number: 21437
 Lamp: (2) CFQ26W
 Total Lumens: 3600
 Fixture Efficiency: = 39.1%
 IES File: F21437.IES
 S/MH Ratio = 1.3, 1.4
 Beam Angle: 93.18

LIGHTING PERFORMANCE DATA		
CEILING HEIGHT* (FT.)	INITIAL FOOTCANDLES	BEAM DIAMETER (FT.-IN.)
8	21.3	11-8
10	11.5	15-10
12	7.1	20-1
14	4.9	24-4
16	3.5	28-7

DISTRIBUTION CURVE



COEFFICIENTS OF UTILIZATION ZONAL CAVITY METHOD

Effective Floor Cavity Reflectance 0.20

RC	80		70		50	
	50	30	50	30	50	30
RW	50	30	50	30	50	30
0	46	46	45	45	42	42
1	41	40	40	40	39	38
2	36	34	36	34	34	34
3	34	30	33	30	32	29
4	29	28	29	27	28	27
5	28	25	27	23	26	23
6	25	22	25	22	23	22
7	23	20	23	20	22	20
8	20	17	20	17	20	17
9	20	17	19	17	19	16
10	17	14	17	14	17	14

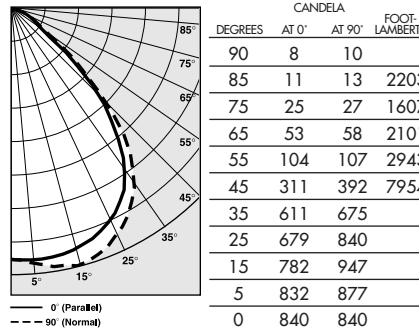
OM62H26QPLFLR-CSFF Photometric Data

Decorative Glass Lens with Floating Luminous Ring

Report Number: 21438
 Lamp: (2) CFQ26W
 Total Lumens: 3600
 Fixture Efficiency: = 43.1%
 IES File: F21438.IES
 S/MH Ratio = 1.2, 1.3
 Beam Angle: 86.19

LIGHTING PERFORMANCE DATA		
CEILING HEIGHT* (FT.)	INITIAL FOOTCANDLES	BEAM DIAMETER (FT.-IN.)
8	27.8	10-4
10	14.9	14-0
12	9.3	17-9
14	6.4	21-6
16	4.6	25-3

DISTRIBUTION CURVE



COEFFICIENTS OF UTILIZATION ZONAL CAVITY METHOD

Effective Floor Cavity Reflectance 0.20

RC	80		70		50	
	50	30	50	30	50	30
RW	50	30	50	30	50	30
0	51	51	50	50	47	47
1	46	45	46	44	44	42
2	41	40	40	39	40	38
3	38	34	38	34	35	34
4	34	32	34	30	33	30
5	32	28	30	28	30	28
6	28	26	28	26	28	25
7	27	23	27	23	26	23
8	25	22	25	22	23	20
9	23	20	23	20	22	20
10	20	17	20	17	20	17

*Readings at working plane, 2'6" above floor. Beam Angle and Diameter Cutoff at 50% of max. Candlepower Coefficients used at effective reflectances of: 70% Ceiling, 50% Walls, 20% Floor

To convert values for optional reflector colors, multiply by:
 Gold .90 Bronze .82 Pewter .87

Additional photometric test files are available @ omegalighting.com



OMEGA LIGHTING:
 776 South Green St., Tupelo, MS 38804
 Phone 662.842.7212 FAX 662.841.5501

CANADIAN DIVISION:
 189 Bullock Drive, Markham, Ontario, Canada L3P 1W4
 Phone 905.294.9570 FAX 800.268.0003