

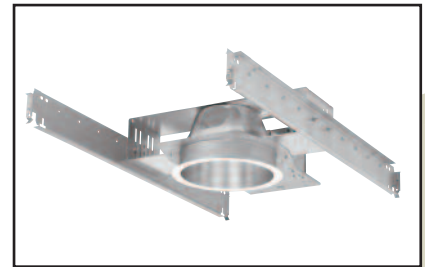
OM61H42PLTSRD

6" Decorative Shallow Recessed Depth Downlight

CAT. NO:

TYPE:

PROJECT:



PRODUCT INFORMATION

Applications

High efficiency shallow recessed fixture designed to accommodate limited mounting depths. Wide beam allows greater spacing between fixtures.

Specifications

1. **Ballast** - One (1) Type 1 Class P, high power factor universal voltage electronic compact fluorescent ballast. Offer both 1 or 2 lamp operation for 120 through 277 volt input voltage.

	(2)13W 13W 120V 277V	(1)18W 18W 120V 277V	(1)26W 26W 120V 277V	(1)42W 42W 120V 277V
Line current amps	.27 .12	.19 .08	.25 .11	.42 .18
Input watts including ballast loss	32 32	22 22	28 28	48 48
Ballast factor	.98+ .98+	1.00 1.00	.98+ .98+	.98+ .98+
Minimum starting temperature	0°F 0°F	0°F 0°F	0°F 0°F	0°F 0°F

2. **Housing** - 20 gauge steel housing with integral splice compartment.

3. **Installation** - Mounting pan has pre-installed C-channel with vertical and horizontal adjustments. Ballasts and splice compartment are accessible from below ceiling. For 27" flat bar hanger pair, specify Q1031 accessory, ordered separately.

4. **Reflector** - Precision spun .050 aluminum one piece reflector, self flanged with clear specular low iridescent finish. Reflector is screw mounted for positive attachment to socket assembly. Standard flat flange is painted white. Optional polished flange matching reflector finish available, add FF to catalog number.

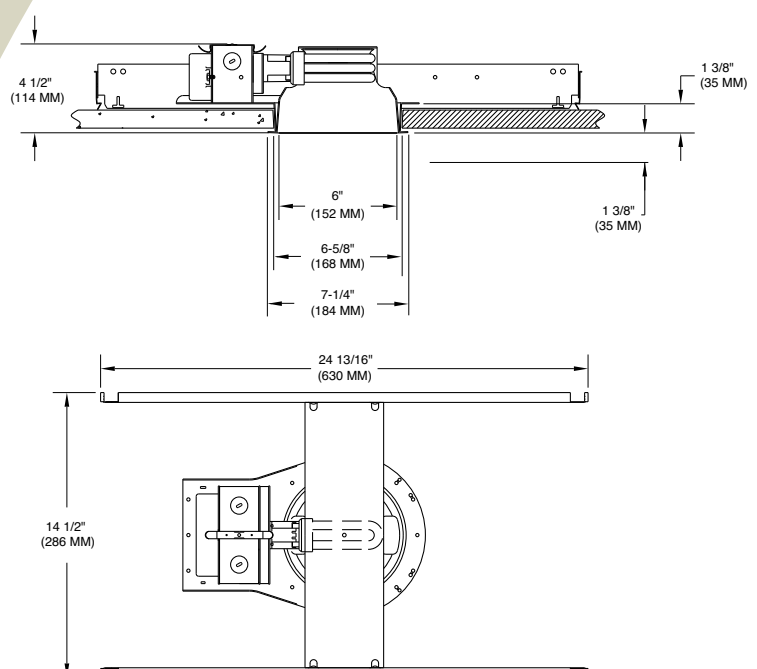
5. **Sockets** - CFM42W/GX24q, CFM32W/GX24q, CFM26W/GX24q, CFM18W/GX24q, CFQ26W/G24q, CFQ18W/G24q, CFQ13W/G24q horizontally mounted, 4 pin plug-in type. Socket assembly rotates 90° to allow for alignment of lamps and reflector within fixture, for design flexibility. (Lamps ordered separately.)

6. **Junction box** - Large 27.56 cubic inch 16 gauge galvanized steel with snap-on cover and ground wire riveted to frame. Approved for through wiring with up to 8 #12 AWG conductors.

7. **Optional emergency system** - Emergency system includes battery, electronic circuitry, charger and test/monitor plate with test switch and charging indicator light. Test/monitor plate may be installed in the ceiling near the fixture or other remote location. Emergency system operates appropriate lamp wattage for a minimum of 90 minutes following power failure. Battery is recharged automatically following restoration of power. Complies with NFPA life safety code, OSHA and NEC. Suitable for dry locations.

8. **U.L. Listed** - For use in damp locations and approved for Through Branch Circuit Wiring. I.B.E.W. union made.

Canadian Specifications may vary from these shown, consult Canadian Division.



6

CATALOG SYSTEM AND OPTIONS

EXAMPLE OF COMPLETE CATALOG NUMBER: **OM61H42PLTSRD-120/277**

OMEGA Apr.	No. of Lamps	Lamps Position	Lamp (by others)	Fixture Type	Reflector Finish	Options	Supply Voltage
OM6	1	H		SRD	-	-	-
	2'	Horizontal	42 PLT - Triple Tube CFL 32 PLT - Triple Tube CFL 26 PLT - Triple Tube CFL 18 PLT - Triple Tube CFL	Shallow Recessed Depth	CS Clear Specular CSS Clear Semi-Specular HZ Haze GS Gold Specular WT Wheat PW Pewter BK Black BZ Bronze WH White FF Finish Flange (as suffix to color)	EM Emergency IE Integral Emergency FZ120 Fusing FZ277 Fusing FZ347 Fusing CP Chicago Plenum Q1031 Flat Bar Hangers SA6 Sloped Ceiling Adpt. DL1 Dimming, Lutron Compact SE, 120v DL2 Dimming, Lutron Compact SE, 277v DX1 Dimming, Advance Mark X, 120v DX2 Dimming, Advance Mark X, 277v CL Clear Lens PL Prismatic Lens FL Fresnel Lens	120/277 347 *
			26 QPL - Quad CFL 18 QPL - Quad CFL 13 QPL - Quad CFL				



FIVE YEAR
Warranty

1. 2 lamp configuration available with QPL lamps only.

OMEGA LIGHTING: 776 South Green St., Tupelo, MS 38804 Phone 662.842.7212 FAX 662.841.5501

Omega Lighting is a Philips group brand

PHILIPS

OM61H32PLTSRD

Photometric Data

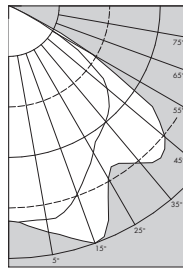
Decorative Shallow Recessed Depth Downlight

Report Number: 24457
 Lamp: (1)CFT32W
 Total Lumens: 2400
 Fixture Efficiency: = 52.9%
 IES File: F24457.IES
 S/MH Ratio = 1.2, 1.4
 Beam Angle: 114.29

LIGHTING PERFORMANCE DATA

CEILING HEIGHT* (FT.)	INITIAL FOOTCANDLES	BEAM DIAMETER (FT.-IN.)
8	14.9	17 - 0
10	8.0	23 - 3
12	5.0	29 - 5
14	3.4	35 - 7
16	2.5	41 - 10

DISTRIBUTION CURVE



F24457

DEGREES	CANDELA		FOOT-LAMBERTS
	AT 0°	AT 90°	
90	0	0	
85	1	1	184
75	3	4	216
65	36	46	1552
55	207	369	8034
45	299	452	8497
35	332	404	
25	387	497	
15	449	505	
5	454	464	
0	452	452	

COEFFICIENTS OF UTILIZATION ZONAL CAVITY METHOD

Effective Floor Cavity Reflectance 0.20

RC	80			70			50		
	50	30	50	30	50	30	50	30	50
RW	50	30	50	30	50	30	50	30	50
0	63	63	63	63	60	60	60	60	60
1	58	56	55	53	56	56	56	56	56
2	54	50	46	45	53	50	50	50	50
3	50	45	40	38	48	44	44	44	44
4	46	40	35	33	45	39	45	39	45
5	41	35	30	28	40	34	40	34	40
6	39	32	28	25	38	32	38	32	38
7	35	28	25	22	34	28	34	28	34
8	33	27	22	19	33	26	33	26	33
9	30	23	20	17	29	23	29	23	29
10	28	22	17	16	28	22	28	22	28

OM62H26QPLSRDCS

Photometric Data

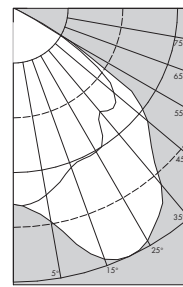
Decorative Shallow Recessed Depth Downlight

Report Number: 24469
 Lamp: (2)CFQ26W
 Total Lumens: 3600
 Fixture Efficiency: = 45.2%
 IES File: F24469.IES
 S/MH Ratio = 1.3, 1.7
 Beam Angle: 113.48

LIGHTING PERFORMANCE DATA

CEILING HEIGHT* (FT.)	INITIAL FOOTCANDLES	BEAM DIAMETER (FT.-IN.)
8	18.2	16 - 9
10	9.8	22 - 10
12	6.1	28 - 12
14	4.2	35 - 1
16	3.0	41 - 2

DISTRIBUTION CURVE



F24469

DEGREES	CANDELA		FOOT-LAMBERTS
	AT 0°	AT 90°	
90	1	0	
85	1	1	184
75	4	4	247
65	26	33	1117
55	289	406	9694
45	397	549	10703
35	438	713	
25	467	770	
15	506	687	
5	552	569	
0	551	551	

COEFFICIENTS OF UTILIZATION ZONAL CAVITY METHOD

Effective Floor Cavity Reflectance 0.20

RC	80			70			50		
	50	30	50	30	50	30	50	30	50
RW	50	30	50	30	50	30	50	30	50
0	54	54	54	54	53	53	53	53	53
1	50	48	46	46	48	47	48	47	48
2	46	42	40	39	45	42	45	42	45
3	42	39	35	33	41	38	41	38	41
4	40	34	30	28	39	34	39	34	39
5	35	30	28	25	35	30	35	30	35
6	34	28	25	22	33	28	33	28	33
7	30	26	22	19	30	25	30	25	30
8	28	23	20	17	28	23	28	23	28
9	27	20	17	14	26	20	26	20	26
10	25	20	16	14	25	19	25	19	25

OM61H42PLTSRD

Photometric Data

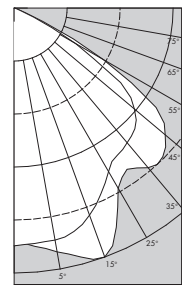
Decorative Shallow Recessed Depth Downlight

Report Number: 24501
 Lamp: (1)CFT42W
 Total Lumens: 3200
 Fixture Efficiency: = 56.7%
 IES File: F24501.IES
 S/MH Ratio = 1.2, 1.3
 Beam Angle: 115.69

LIGHTING PERFORMANCE DATA

CEILING HEIGHT* (FT.)	INITIAL FOOTCANDLES	BEAM DIAMETER (FT.-IN.)
8	21.7	17 - 6
10	11.7	23 - 10
12	7.3	30 - 3
14	5.0	36 - 7
16	3.6	42 - 11

DISTRIBUTION CURVE



F24501

DEGREES	CANDELA		FOOT-LAMBERTS
	AT 0°	AT 90°	
90	0	0	
85	1	1	184
75	5	6	340
65	60	88	2802
55	359	478	11674
45	471	580	11891
35	496	543	
25	566	667	
15	638	711	
5	652	660	
0	656	656	

COEFFICIENTS OF UTILIZATION ZONAL CAVITY METHOD

Effective Floor Cavity Reflectance 0.20

RC	80			70			50		
	50	30	50	30	50	30	50	30	50
RW	50	30	50	30	50	30	50	30	50
0	67	67	67	67	66	66	66	66	66
1	63	60	58	56	60	59	60	59	60
2	57	54	51	47	56	53	56	53	56
3	53	47	44	40	52	46	52	46	52
4	48	42	38	34	47	41	47	41	47
5	45	38	34	29	44	38	44	38	44
6	41	34	29	26	40	34	40	34	40
7	39	30	27	23	38	30	38	30	38
8	35	28	23	20	34	28	34	28	34
9	33	26	22	19	33	26	33	26	33
10	30	23	20	17	30	23	30	23	30

OM62H18QPLSRDCS

Photometric Data

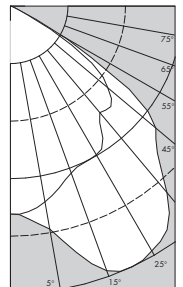
Decorative Shallow Recessed Depth Downlight

Report Number: 24482
 Lamp: (2)CFQ18W
 Total Lumens: 2500
 Fixture Efficiency: = 47.2%
 IES File: F24482.IES
 S/MH Ratio = 1.2, 1.7
 Beam Angle: 112.01

LIGHTING PERFORMANCE DATA

CEILING HEIGHT* (FT.)	INITIAL FOOTCANDLES	BEAM DIAMETER (FT.-IN.)
8	13.7	16 - 4
10	7.4	22 - 3
12	4.6	28 - 2
14	3.1	34 - 1
16	2.3	40 - 0

DISTRIBUTION CURVE



F24482

DEGREES	CANDELA		FOOT-LAMBERTS
	AT 0°	AT 90°	
90	0	0	
85	1	0	92
75	2	3	155
65	19	18	700
55	198	289	6792
45	283	414	7886
35	321	544	
25	345	573	
15	375	508	
5	411	426	
0	414	414	

COEFFICIENTS OF UTILIZATION ZONAL CAVITY METHOD

Effective Floor Cavity Reflectance 0.20

RC	80			70			50		
	50	30	50	30	50	30	50	30	50
RW	50	30	50	30	50	30	50	30	50
0	67	67	67	67	66	66	66	66	66
1	63	60	58	56	60	59	60	59	60
2	57	54	51	47	56	53	56	53	56
3	53	47	44	40	52	46	52	46	52
4	48	42	38	34	47	41	47	41	47
5	45	38	34	29	44	38	44	38	44
6	41	34	29	26	40	34	40	34	40
7	39	30	27	23	38	30	38	30	38
8	35	28	23	20	34	28	34	28	34
9	33	26	22	19	33	26	33	26	33
10	30	23	20	17	30	23	30	23	30

*Readings at working plane, 2'6" above floor. Beam Angle and Diameter Cutoff at 50% of max. Candlepower Coefficients used at effective reflectances of: 70% Ceiling, 50% Walls, 20% Floor

To convert values for optional reflector colors, multiply by:
 Gold .90 Bronze .82 Pewter .87

Additional photometric test files are available @ omegalighting.com