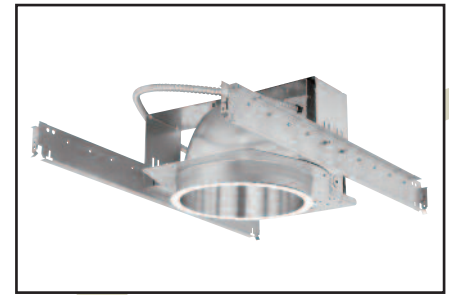


OM82H42PLT

8" Open Reflector Downlights

CAT. NO:

TYPE: PROJECT:



PRODUCT INFORMATION

Applications

Open reflector downlight for use with long-life energy efficient compact fluorescent lamps. Provides medium, uniform light distribution with excellent color rendition. Ideal for areas requiring long hours of continuous operation such as lobbies, corridors, reception areas and offices.

Specifications

1. **Ballast** - One (1) Type 1 Class P, high power factor universal voltage electronic compact fluorescent ballast. Offer both 1 or 2 lamp operation for 120 through 277 volt input voltage.

	(2) 18W 120V	18W 277V	(2) 26W 120V	26W 277V	(2) 32W 120V	32W 277V	(2) 42W 120V	42W 277V
Line current amps	.34	.15	.49	.21	.58	.26	.76	.32
Input watts including ballast loss	40	40	56	56	69	67	91	90
Ballast factor	.98+	.98+	.98+	.98+	1.00	1.00	.98	.98
Minimum starting temperature	0°F	0°F	0°F	0°F	0°F	0°F	0°F	0°F

2. **Mounting pan** - Precision die-stamped 16 gauge galvanized steel. Accommodates ceiling materials up to 1-3/8" thick.

3. **Installation** - Mounting pan has pre-installed C-channel with vertical and horizontal adjustments. Ballasts and junction box are accessible from below ceiling. For 27" flat bar hanger pair, specify Q1031 accessory, ordered separately.

4. **Reflector** - Precision spun .051 aluminum, self flanged with clear specular low indescent Alzak finish. Reflector is screw mounted for positive attachment to socket assembly. Standard flat flange is painted white. Optional polished flange matching reflector finish available, add FF to catalog number.

5. **Baffle** - Precision machined .051 aluminum with deep grooves to minimize aperture glare, anodized matte black or matte white finish. Standard flat flange is painted white. Optional black flange available, add FF to catalog number.

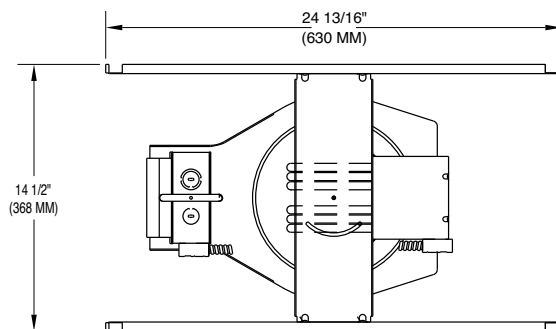
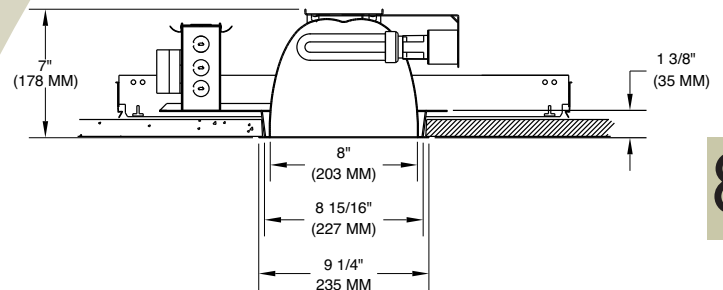
6. **Sockets** - CFM42W/GX24q, CFM32W/GX24q, CFM26W/GX24q, CFM18W/GX24q

7. **Junction box** - Extra large 43.75-cubic inch 16 gauge galvanized steel with snap-on cover and ground wire riveted to frame. Approved for through wiring with up to 8 #12 AWG conductors.

8. **Optional emergency system** - Emergency system includes battery, electronic circuitry, charger, and test/monitor plate with test switch and charging indicator light. Test monitor plate may be installed in the ceiling near the fixture or other remote location. Operates appropriate lamp wattage for a minimum of 90 minutes following power failure. Battery is recharged automatically following restoration of power. Emergency system complies with NFPA life safety code, OSHA and NEC. Suitable for dry locations.

9. **UL Listed** - For use in damp locations and approved for Through Branch Circuit Wiring, I.B.E.W. union made.

* Canadian Specifications may vary from these shown, consult Canadian Division.



8

CATALOG SYSTEM AND OPTIONS

EXAMPLE OF COMPLETE CATALOG NUMBER: OM82H42PLT-CS-120/277

OMEGA Aprt.	No. of Lamps	Lamps Position	Lamp (by others)	Reflector Type	Reflector Finish	Options	Slope Ceiling Adapter Angle	Supply Voltage
OM8	1	H	42 PLT Triple Tube CFL	BB	CS Clear Specular	EM Emergency	5	120/277
	2	Horizontal	32 PLT Triple Tube CFL	Black Baffle	CSS Clear Semi-Specular	IE Integral Emergency	10	347 *
			26 PLT Triple Tube CFL		HZ Haze	FZ120 Fusing	15	
			18 PLT Triple Tube CFL		GS Gold Specular	FZ277 Fusing	20	
					WT Wheat	FZ347 Fusing	25	
					PW Pewter	CP Chicago Plenum	30	
					BK Black	Q1031 Flat Bar Hangers		
					BZ Bronze	SA8 Sloped Ceiling Adpt.		
					WH White	DL1 Dimming, Lutron Compact SE, 120v		
					FCS Faceted Clear Specular	DL2 Dimming, Lutron Compact SE, 277v		
					FCSS Faceted Clear Semi Specular	DX1 Dimming, Advance Mark X, 120v		
					FF Finish Flange (as suffix to color)	DX2 Dimming, Advance Mark X, 277v		
						CL Clear Lens		
						PL Prismatic Lens		
						FL Fresnel Lens		



FIVE YEAR
Warranty

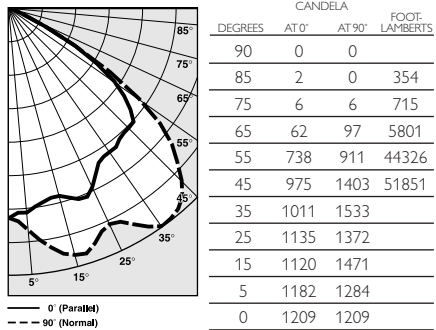
OM82H42PLT-CS Photometric Data

Clear Specular Reflector

Report Number: 21033
Lamp: (2) CFM42W
Total Lumens: 6400
Fixture Efficiency: = 63.0%
IES File: 21033.IES
S/MH Ratio = 1.3, 1.8
Beam Angle: 104.86

LIGHTING PERFORMANCE DATA		
CEILING HEIGHT* (FT.)	INITIAL FOOTCANDLES	BEAM DIAMETER (FT.-IN.)
8	40.0	17-6
10	21.5	23-10
12	13.4	30-3
14	9.1	36-7
16	6.6	42-11

DISTRIBUTION CURVE



COEFFICIENTS OF UTILIZATION ZONAL CAVITY METHOD

Effective Floor Cavity Reflectance 0.20

RC	80			70			50		
	50	30	50	30	50	30	50	30	50
RW	50	30	50	30	50	30	50	30	50
0	68	68	68	68	65	65			
1	63	60	60	59	58	56			
2	56	53	55	52	53	50			
3	50	46	48	45	46	44			
4	45	40	44	40	41	39			
5	40	34	39	34	38	34			
6	35	30	34	30	34	29			
7	33	28	32	28	30	27			
8	29	25	28	25	28	23			
9	27	23	27	22	26	22			
10	25	20	25	20	23	20			

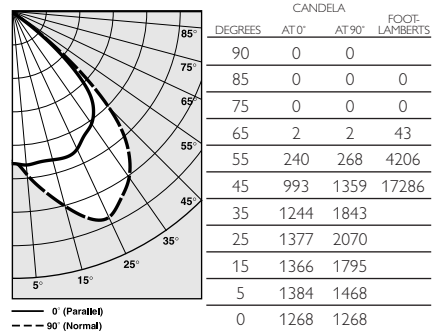
OM82H32PLT-CS Photometric Data

Clear Specular Reflector

Report Number: 2827
Lamp: (2) CFM32W
Total Lumens: 4800
Fixture Efficiency: = 73.7%
IES File: EY5686.IES
S/MH Ratio = 1.8, 1.5
Beam Angle: 96.43

LIGHTING PERFORMANCE DATA		
CEILING HEIGHT* (FT.)	INITIAL FOOTCANDLES	BEAM DIAMETER (FT.-IN.)
8	48.4	12-3
10	26.0	16-9
12	16.2	21-3
14	11.1	25-8
16	8.0	30-2

DISTRIBUTION CURVE



COEFFICIENTS OF UTILIZATION ZONAL CAVITY METHOD

Effective Floor Cavity Reflectance 0.20

RC	80			70			50		
	50	30	50	30	50	30	50	30	50
RW	50	30	50	30	50	30	50	30	50
0	88	88	86	86	82	82			
1	81	78	79	77	76	74			
2	74	71	73	70	70	68			
3	68	64	67	63	65	61			
4	62	57	61	57	59	56			
5	56	51	56	51	54	50			
6	52	46	51	46	50	46			
7	47	41	46	41	45	40			
8	42	36	41	36	41	36			
9	37	32	37	32	36	31			
10	34	28	33	28	33	28			

8

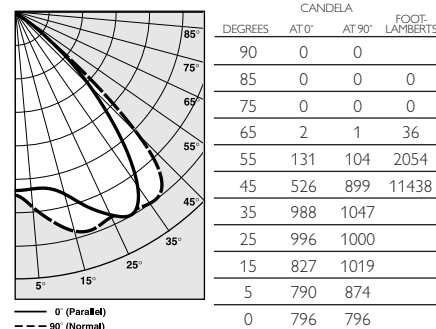
OM81H42PLT-CS Photometric Data

Clear Specular Reflector

Report Number: 2775
Lamp: (1) CFM42W
Total Lumens: 3200
Fixture Efficiency: = 69.8%
IES File: EY5487.IES
S/MH Ratio = 1.8, 1.6
Beam Angle: 96.76

LIGHTING PERFORMANCE DATA		
CEILING HEIGHT* (FT.)	INITIAL FOOTCANDLES	BEAM DIAMETER (FT.-IN.)
8	28.0	12-4
10	15.1	16-10
12	9.4	21-4
14	6.4	25-10
16	4.6	30.4

DISTRIBUTION CURVE



COEFFICIENTS OF UTILIZATION ZONAL CAVITY METHOD

Effective Floor Cavity Reflectance 0.20

RC	80			70			50		
	50	30	50	30	50	30	50	30	50
RW	50	30	50	30	50	30	50	30	50
0	77	77	75	75	72	72			
1	71	69	70	68	67	65			
2	65	62	64	61	62	60			
3	60	56	59	55	57	54			
4	54	50	54	50	52	49			
5	49	45	49	44	47	44			
6	45	40	44	40	43	39			
7	41	36	40	36	39	35			
8	36	32	36	31	35	31			
9	32	28	32	27	31	27			
10	29	24	29	24	28	24			

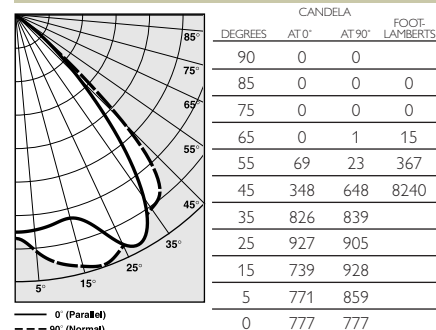
OM81H32PLT-CS Photometric Data

Clear Specular Reflector

Report Number: 2777
Lamp: (1) 32W Triple
Total Lumens: 2400
Fixture Efficiency: = 69.8%
IES File: EY5486.IES
S/MH Ratio = 1.6, 1.5
Beam Angle: 92.72

LIGHTING PERFORMANCE DATA		
CEILING HEIGHT* (FT.)	INITIAL FOOTCANDLES	BEAM DIAMETER (FT.-IN.)
8	26.9	11-6
10	14.5	15-8
12	9.0	19-11
14	6.2	24-1
16	4.5	28-3

DISTRIBUTION CURVE



COEFFICIENTS OF UTILIZATION ZONAL CAVITY METHOD

Effective Floor Cavity Reflectance 0.20

RC	80			70			50		
	50	30	50	30	50	30	50	30	50
RW	50	30	50	30	50	30	50	30	50
0	82	82	80	80	77	77			
1	76	74	74	73	72	70			
2	70	67	69	66	67	64			
3	64	61	63	60	62	59			
4	59	55	58	54	57	53			
5	54	49	53	49	52	48			
6	50	45	49	45	48	44			
7	45	40	45	40	44	40			
8	41	36	40	36	40	35			
9	37	32	36	32	36	31			
10	33	28	33	28	32	28			

*Readings at working plane, 2'6" above floor: Beam Angle and Diameter Cutoff at 50% of max.
Candlepower Coefficients used at effective reflectances of: 70% Ceiling, 50% Walls, 20% Floor

To convert values for optional reflector colors, multiply by:
Gold .90 Bronze .82 Pewter .87

Additional photometric test files are available @ omegalighting.com



PHILIPS OMEGA
776 South Green St., Tupelo, MS 38804
Phone 662.842.7212 FAX 662.841.5501

PHILIPS DAY-BRITE CANADA
189 Bullock Drive, Markham, Ontario, Canada L3P 1W4
Phone 905.294.9570 FAX 800.268.0003