

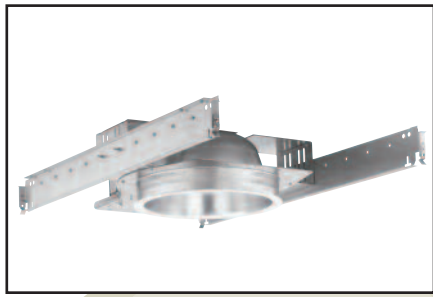
OM82H42PLTSRD

8" Shallow Recessed Depth Downlights

CAT. NO.:

TYPE:

PROJECT:



PRODUCT INFORMATION

Applications

High efficiency shallow recessed fixture designed to accommodate limited mounting depths. Wide beam allows greater spacing between fixtures.

Specifications

1. **Ballast** - One (1) Type 1 Class P, high power factor universal voltage electronic compact fluorescent ballast. Offers 1 lamp operation for 120 through 277 volt input voltage.

	(2) 18W 120V	18W 277V	(2) 26W 120V	26W 277V	(2) 32W 120V	32W 277V	(2) 42W 120V	42W 277V
Line current amps	.34	.15	.49	.21	.58	.26	.76	.32
Input watts including ballast loss	40	40	56	56	69	67	91	90
Ballast factor	.98+	.98+	.98+	.98+	1.00	1.00	.98	.98
Minimum starting temperature	0°F	0°F	0°F	0°F	0°F	0°F	0°F	0°F

2. **Installation** - Mounting pan has pre-installed C-channel with vertical and horizontal adjustments. Ballasts and junction box are accessible from below ceiling. For 27" flat bar hanger pair, specify Q1031 accessory, ordered separately.

3. **Reflector** - Precision spun .050 aluminum one piece reflector, self flanged with clear specular low iridescent Alzak finish. Reflector is screw mounted for positive attachment to socket assembly. Standard flat flange is painted white. Optional polished flange matching reflector finish available, add FF to catalog number.

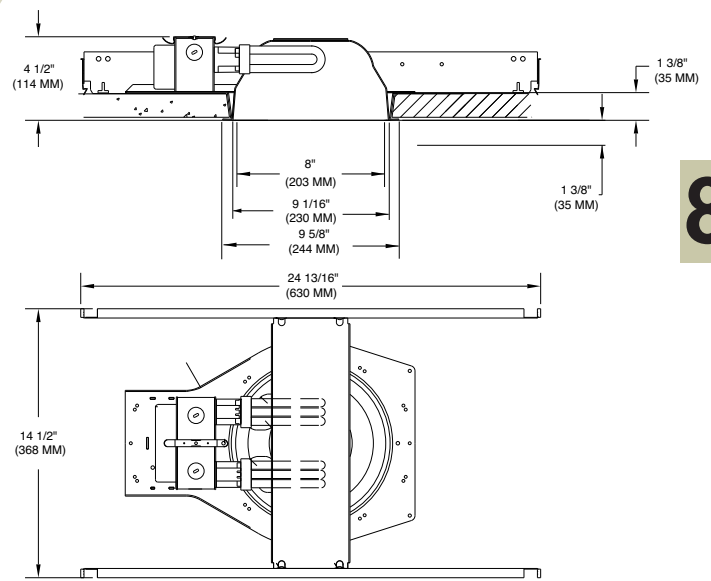
4. **Sockets** - CFM42W/GX24q, CFM32W/GX24q, CFM26W/GX24q, CFM18W/GX24q, CFQ26W/G24q, CFQ18W/G24q.

5. **Junction box** - Large 27.56 cubic inch 16 gauge galvanized steel with snap-on cover and ground wire riveted to frame. Approved for through wiring with up to 8 #12 AWG conductors.

6. **Optional emergency system** - Emergency system includes battery, electronic circuitry, charger and test/monitor plate with test switch and charging indicator light. Test/monitor plate may be installed in the ceiling near the fixture or other remote location. Emergency system operates appropriate lamp wattage for a minimum of 90 minutes following power failure. Battery is recharged automatically following restoration of power. Complies with NFPA life safety code, OSHA and NEC. Suitable for dry locations.

7. **U.L. Listed** - For use in damp locations and approved for Through Branch Circuit Wiring. I.B.E.W. union made.

* Canadian Specifications may vary from these shown, consult Canadian Division.



8

CATALOG SYSTEM AND OPTIONS

EXAMPLE OF COMPLETE CATALOG NUMBER: **OM82H42PLTSRD-120/277**

OMEGA Apr.	No. of Lamps	Lamps Position	Lamp (by others)	Fixture Type	Reflector Finish	Options	Supply Voltage
OM8	1	H	42 PLT Triple Tube CFL	SRD Shallow	CS Clear Specular	EM Emergency	120/277
	2	Horizontal	32 PLT Triple Tube CFL	Recessed	CSS Clear Semi-Specular	IE Integral Emergency	347 *
			26 PLT Triple Tube CFL	Depth	HZ Haze	FZ120 Fusing	
			18 PLT Triple Tube CFL		GS Gold Specular	FZ277 Fusing	
			26 QPL Quad Tube CFL		WT Wheat	FZ347 Fusing	
			18 QPL Quad Tube CFL		PW Pewter	CP Chicago Plenum	
			13 QPL Quad Tube CFL		BK Black	Q1031 Flat Bar Hangers	
					BZ Bronze	SA6 Sloped Ceiling Adpt.	
					WH White	DL1 Dimming, Lutron Compact SE, 120v	
					FF Finish Flange (as suffix to color)	DL2 Dimming, Lutron Compact SE, 277v	
						DX1 Dimming, Advance Mark X, 120v	
						DX2 Dimming, Advance Mark X, 277v	
						CL Clear Lens	
						PL Prismatic Lens	
						FL Fresnel Lens	



FIVE YEAR
Warranty

OMEGA LIGHTING: 776 South Green St., Tupelo, MS 38804 Phone 662.842.7212 FAX 662.841.5501

Omega Lighting is a Philips group brand



OM82H26QPLSRDCS

Photometric Data

Decorative Shallow Recessed Depth

Report Number: 24468
 Lamp: (2)CFQ26W
 Total Lumens: 3600
 Fixture Efficiency: = 58.1%
 IES File: F24468.IES
 S/MH Ratio = 1.4, 1.8
 Beam Angle: 108.06

LIGHTING PERFORMANCE DATA		
CEILING HEIGHT* (FT.)	INITIAL FOOTCANDLES	BEAM DIAMETER (FT.-IN.)
8	23.3	15 - 2
10	12.5	20 - 8
12	7.8	26 - 2
14	5.3	31 - 8
16	3.9	37 - 2

DISTRIBUTION CURVE

DEGREES	CANDELA		FOOT-LAMBERTS
	AT 0°	AT 90°	
90	0	0	0
85	0	0	0
75	3	3	104
65	27	41	724
55	177	406	4574
45	530	834	8680
35	654	1010	
25	708	1033	
15	697	914	
5	731	728	
0	705	705	

COEFFICIENTS OF UTILIZATION ZONAL CAVITY METHOD

Effective Floor Cavity Reflectance 0.20

RC	80			70			50		
	50	30	50	30	50	30	50	30	
RW	50	30	50	30	50	30	50	30	
0	68	68	68	68	68	68	68	68	
1	65	63	60	58	63	61	58	61	
2	59	56	53	51	58	55	53	55	
3	56	51	46	44	54	50	46	50	
4	52	46	40	38	50	45	40	45	
5	47	40	36	33	46	40	36	40	
6	44	36	33	28	42	36	33	36	
7	40	34	28	26	40	33	28	33	
8	38	30	26	23	36	30	26	30	
9	35	28	23	20	34	28	23	28	
10	33	26	22	19	33	26	22	26	

OM82H32PLTSRDCS

Photometric Data

Decorative Shallow Recessed Depth

Report Number: 24470-1
 Lamp: (2)CFT32W
 Total Lumens: 4800
 Fixture Efficiency: = 68.4%
 IES File: F244701.IES
 S/MH Ratio = 1.4, 1.7
 Beam Angle: 107.45

LIGHTING PERFORMANCE DATA		
CEILING HEIGHT* (FT.)	INITIAL FOOTCANDLES	BEAM DIAMETER (FT.-IN.)
8	39.1	14 - 12
10	21.0	20 - 5
12	13.1	25 - 11
14	8.9	31 - 4
16	6.5	36 - 10

DISTRIBUTION CURVE

DEGREES	CANDELA		FOOT-LAMBERTS
	AT 0°	AT 90°	
90	1	0	0
85	1	1	103
75	4	4	139
65	41	105	1555
55	364	676	8159
45	798	1232	12919
35	1032	1492	
25	1151	1545	
15	1127	1411	
5	1184	1196	
0	1183	1183	

COEFFICIENTS OF UTILIZATION ZONAL CAVITY METHOD

Effective Floor Cavity Reflectance 0.20

RC	80			70			50		
	50	30	50	30	50	30	50	30	
RW	50	30	50	30	50	30	50	30	
0	81	81	81	81	81	81	81	81	
1	76	73	71	69	75	71	75	71	
2	70	66	63	59	68	65	68	65	
3	65	59	55	51	64	58	64	58	
4	60	54	47	45	58	53	58	53	
5	56	47	42	39	55	47	55	47	
6	52	44	38	34	51	42	51	42	
7	47	40	34	30	46	39	46	39	
8	45	35	30	27	44	35	44	35	
9	41	33	28	25	40	33	40	33	
10	39	30	26	22	38	29	38	29	

OM81H32PLTSRDCS

Photometric Data

Decorative Shallow Recessed Depth

Report Number: 24458
 Lamp: (1)CFT32W
 Total Lumens: 2400
 Fixture Efficiency: = 67.2%
 IES File: F24458.IES
 S/MH Ratio = 1.4, 1.2
 Beam Angle: 98.35

LIGHTING PERFORMANCE DATA		
CEILING HEIGHT* (FT.)	INITIAL FOOTCANDLES	BEAM DIAMETER (FT.-IN.)
8	16.9	7-1
10	9.1	9-8
12	5.7	12-3
14	3.9	14-10
16	2.8	17-5

DISTRIBUTION CURVE

DEGREES	CANDELA		FOOT-LAMBERTS
	AT 0°	AT 90°	
90	0	1	0
85	0	1	52
75	1	3	70
65	34	29	671
55	246	205	3538
45	485	525	6428
35	679	609	
25	752	664	
15	851	745	
5	817	767	
0	777	777	

COEFFICIENTS OF UTILIZATION ZONAL CAVITY METHOD

Effective Floor Cavity Reflectance 0.20

RC	80			70			50		
	50	30	50	30	50	30	50	30	
RW	50	30	50	30	50	30	50	30	
0	80	80	80	80	80	80	80	80	
1	75	72	70	68	72	70	72	70	
2	69	66	61	58	68	65	68	65	
3	65	58	55	51	63	57	63	57	
4	59	54	48	45	58	53	58	53	
5	56	48	44	40	55	47	55	47	
6	52	44	39	34	51	44	51	44	
7	47	40	34	32	46	40	46	40	
8	45	36	32	28	44	36	44	36	
9	41	34	28	26	41	34	41	34	
10	40	32	27	23	39	30	39	30	

OM82H18QPLSRDCS

Photometric Data

Decorative Shallow Recessed Depth

Report Number: 24881
 Lamp: (2)CFQ18W
 Total Lumens: 2500
 Fixture Efficiency: = 52.9%
 IES File: F24481.IES
 S/MH Ratio = 1.3, 1.8
 Beam Angle: 104.86

LIGHTING PERFORMANCE DATA		
CEILING HEIGHT* (FT.)	INITIAL FOOTCANDLES	BEAM DIAMETER (FT.-IN.)
8	16.0	14 - 4
10	8.6	19 - 6
12	5.4	24 - 8
14	3.7	29 - 11
16	2.7	35 - 1

DISTRIBUTION CURVE

DEGREES	CANDELA		FOOT-LAMBERTS
	AT 0°	AT 90°	
90	0	0	0
85	0	0	0
75	2	2	70
65	14	27	437
55	109	229	2652
45	322	523	5378
35	417	661	
25	449	699	
15	461	615	
5	492	525	
0	485	485	

COEFFICIENTS OF UTILIZATION ZONAL CAVITY METHOD

Effective Floor Cavity Reflectance 0.20

RC	80			70			50		
	50	30	50	30	50	30	50	30	
RW	50	30	50	30	50	30	50	30	
0	63	63	63	63	60	60	60	60	
1	58	56	56	54	57	56	57	56	
2	55	52	48	46	54	51	54	51	
3	51	46	42	40	50	46	50	46	
4	46	41	38	34	46	40	46	40	
5	44	38	34	30	42	36	42	36	
6	40	34	29	27	40	34	40	34	
7	38	30	27	23	36	30	36	30	
8	34	28	25	22	34	28	34	28	
9	33	26	22	20	32	26	32	26	
10	30	23	20	17	29	23	29	23	

*Readings at working plane, 2'6" above floor. Beam Angle and Diameter Cutoff at 50% of max.
 Candlpower Coefficients used at effective reflectances of: 70% Ceiling, 50% Walls, 20% Floor
 Additional photometric test files are available @ omegalighting.com

To convert values for optional reflector colors, multiply by:
 Gold .90 Bronze .82 Pewter .87