

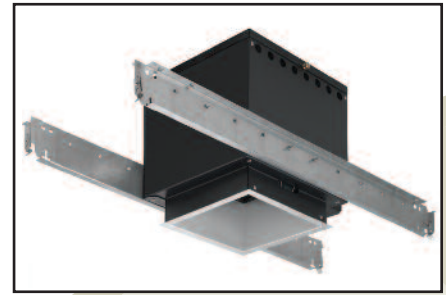
# OM6150PAR38SQRADJ30

## 6" Square PAR Incandescent Adjustable Downlight

CAT. NO:

TYPE:

PROJECT:



### PRODUCT INFORMATION

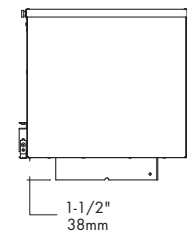
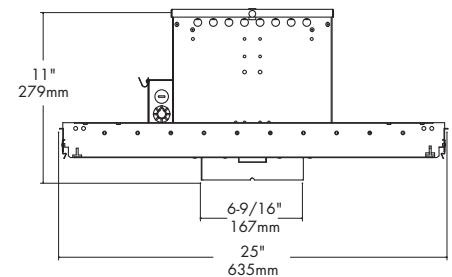
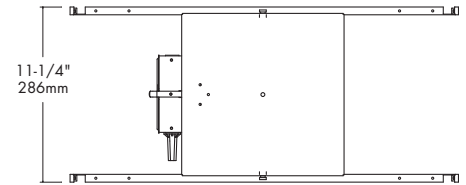
#### Applications

Square recessed 30° adjustable downlight well suited for general or accent lighting in sloped ceiling applications, auditoriums, schools, churches, restaurants, hotels and offices. Full horizontal rotation makes this fixture ideal for highlighting store displays, sculptures or vertical surfaces.

#### Specifications

- Housing** - Precision formed heavy duty 20 gauge steel with polyester powder coat matte black to suppress light leaks. Housing top may be removed for servicing unit from above. Upper optic is attached to housing lid for easy access to lamp. Housing throat is 1-1/2" in depth to accommodate extra thick ceilings. Junction box and all electrical components may be accessed below or above ceiling. 360 degree rotation and 30 degree vertical adjustment. Toolless locking of each adjustment provides proper focus and aiming during relamping.
- Installation** - Housing has pre-installed Revelation C-channels for vertical and/or horizontal adjustment. Channels are pre-set at factory to center in grid ceiling without adjustments. Preset channels ensure proper alignment when row mounting multiple downlights. For wood construction specify Q1031 (ordered separately). Flat bar hanger should install perpendicular to pre-installed bar hangers.
- Optics** - The trim is die-formed of .040 low iridescent aluminum and is self-flanged with a variety of finishes available. Black coating on back of trim provides superior protection against flash and/or light leaks around the flange. White flange is standard. Optional polished flange matching trim finish is available, add FF to catalog number.
- Socket** - Medium base 250V porcelain socket with nickel-plated copper screw and shell and 200° C wire positions lamp at optical focal plane of reflector for maximum performance.
- Junction box** - Large 20 gauge galvanized steel with snap-on covers. Approved for through wiring with up to 8 #12 AWG conductors.
- Thermal Protection** - A thermal protection device which meets all U.L. and NEC requirements is standard.
- U.L. Listed** - For use in damp locations only and approved for Through Branch Circuit Wiring. I.B.E.W. union made.
  - Canadian Specifications may vary from these shown, consult Canadian Division.

6



### CATALOG SYSTEM AND OPTIONS

EXAMPLE OF COMPLETE CATALOG NUMBER: **OM6150PAR38SQRADJ30-CS**

OMEGA Apr.	Lamp (by others)	Square Type	Product Family	Reflector Finish	Optional Lens
OM6	75 PAR30 150 PAR38	SQ Square	RADJ30 Adjustable	CS Clear Specular CSS Clear Semi-Specular GS Gold Specular WT Wheat PW Pewter BK Black BZ Bronze WH White FF Finish Flange (as suffix to color)	CL Clear Glass PL Prismatic (C73 Glass) SL Solite Glass



**FIVE YEAR**  
Warranty

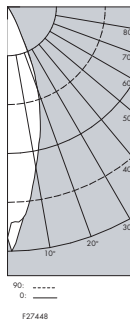
**OM675PAR30SQ-RADJ-CS**

**Clear Specular Reflector**

Report number: 27448  
 Lamp: (1)75WINC  
 Fixture Efficiency: 86.3%  
 S/MH Ratio (0 degree plane): 0.5  
 (90 degree plane): 0.5  
 Total Fixture Lumens: 812  
 IES file: F27448.IES  
 Beam Angle: 32.33

LIGHTING PERFORMANCE DATA		
CEILING HEIGHT* (FT.)	INITIAL FOOTCANDLES	BEAM DIAMETER (FT.-IN.)
8	80.1	3 - 2
10	43.1	4 - 4
12	26.9	5 - 6
14	18.3	6 - 8
16	13.3	7 - 10

DISTRIBUTION CURVE



DEGREES	CANDELA		FOOT-LAMBERTS
	AT 0°	AT 90°	
90	0	0	0
85	0	0	0
75	1	0	24
65	2	1	45
55	2	2	44
45	8	6	124
35	49	37	
25	428	440	
15	1333	1284	
5	2185	2145	
0	2424	2424	

COEFFICIENTS OF UTILIZATION ZONAL CAVITY METHOD

Effective Floor Cavity Reflectance 0.20

RC	80			70			50		
	50	30	50	30	50	30	50	30	
0	103	103	103	103	100	100	100	100	
1	98	96	94	93	96	94	96	94	
2	94	92	89	86	93	90	86	81	
3	92	86	83	81	90	85	86	81	
4	88	82	79	77	86	81	83	79	
5	84	80	76	72	81	76	81	76	
6	81	76	71	68	78	72	78	72	
7	79	72	68	66	76	72	76	72	
8	77	69	66	63	76	69	76	69	
9	73	68	64	60	72	67	72	67	
10	71	65	60	58	70	65	70	65	

6

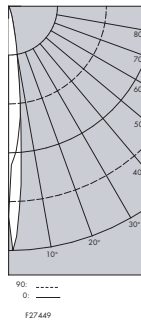
**OM675PAR30SQ-RADJ-CS**

**Clear Specular Reflector**

Report number: 27449  
 Lamp: (1)75WINC  
 Fixture Efficiency: 82.8%  
 S/MH Ratio (0 degree plane): 0.2  
 (90 degree plane): 0.2  
 Total Fixture Lumens: 778  
 IES file: F27449.IES  
 Beam Angle: 12.35

LIGHTING PERFORMANCE DATA		
CEILING HEIGHT* (FT.)	INITIAL FOOTCANDLES	BEAM DIAMETER (FT.-IN.)
8	340.7	1 - 2
10	183.2	1 - 7
12	114.2	2 - 1
14	77.9	2 - 6
16	56.5	2 - 11

DISTRIBUTION CURVE



DEGREES	CANDELA		FOOT-LAMBERTS
	AT 0°	AT 90°	
90	0	0	0
85	0	0	0
75	1	0	24
65	1	1	30
55	1	3	44
45	5	6	98
35	14	13	
25	131	136	
15	859	847	
5	5974	7060	
0	10306	10306	

COEFFICIENTS OF UTILIZATION ZONAL CAVITY METHOD

Effective Floor Cavity Reflectance 0.20

RC	80			70			50		
	50	30	50	30	50	30	50	30	
0	98	98	98	98	95	95	95	95	
1	95	93	93	92	93	92	93	92	
2	93	91	88	86	91	89	91	89	
3	91	86	84	82	89	85	89	85	
4	89	84	81	80	86	83	86	83	
5	86	82	80	78	85	81	85	81	
6	84	80	78	76	83	80	83	80	
7	82	79	76	73	81	78	81	78	
8	81	77	73	71	81	77	81	77	
9	80	76	72	70	79	75	79	75	
10	79	73	70	69	78	73	78	73	

\*Readings at working plane, 2'6" above floor. Beam Angle and Diameter Cutoff at 50% of max. Candlepower Coefficients used at effective reflectances of: 70% Ceiling, 50% Walls, 20% Floor

To convert values for optional reflector colors, multiply by:  
 Gold .90      Bronze .82      Pewter .87

Additional photometric test files are available @ [omegalighting.com](http://omegalighting.com)



**OMEGA LIGHTING:**  
 776 South Green St., Tupelo, MS 38804  
 Phone 662.842.7212 FAX 662.841.5501

**CANADIAN DIVISION:**  
 189 Bullock Drive, Markham, Ontario, Canada L3P 1W4  
 Phone 905.294.9570 FAX 800.268.0003