

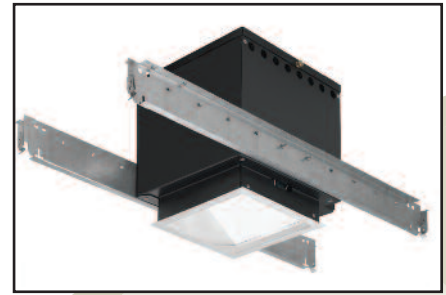
# OM6150PAR38SQLWW

## 6" Square PAR Incandescent Lensed Wall Wash

CAT. NO:

TYPE:

PROJECT:



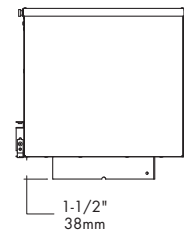
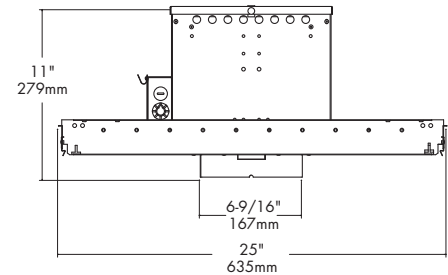
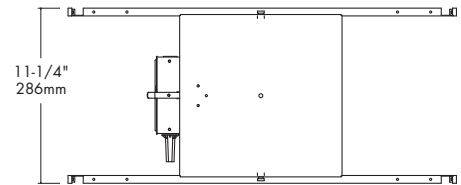
### PRODUCT INFORMATION

#### Applications

Small square reflector downlight for use with economical incandescent lamps. Provides broad, uniform light distribution for areas such as lobbies, reception areas, restaurants and offices.

#### Specifications

- Housing** - Precision formed heavy duty 20 gauge steel with polyester powder coat matte black to suppress light leaks. Housing top may be removed for servicing unit from above. Upper optic is attached to housing lid for easy access to lamp. Housing throat is 1-1/2" in depth to accommodate extra thick ceilings. Junction box and all electrical components may be accessed below or above ceiling.
  - Installation** - Housing has pre-installed Revelation C-channels for vertical and/or horizontal adjustment. Channels are pre-set at factory to center in grid ceiling without adjustments. Preset channels ensure proper alignment when row mounting multiple downlights. For wood construction specify Q1031 (ordered separately). Flat bar hanger should install perpendicular to pre-installed bar hangers.
  - Optics** - Prismatic glass spread lens provides for even light distribution in both the vertical and horizontal planes. The trim is die-formed of .040 low iridescent aluminum and is self-flanged with a variety of finishes available. Black coating on back of trim provides superior protection against flash and/or light leaks around the flange. White flange is standard. Optional polished flange matching trim finish is available, add FF to catalog number.
  - Socket** - Medium base 250V porcelain socket with nickel-plated copper screw and shell and 200° C wire positions lamp at optical focal plane of reflector for maximum performance.
  - Junction box** - Large 20 gauge galvanized steel with snap-on covers. Approved for through wiring with up to 8 #12 AWG conductors.
  - Thermal Protection** - A thermal protection device which meets all U.L. and NEC requirements is standard.
  - U.L. Listed** - For use in damp locations only and approved for Through Branch Circuit Wiring. I.B.E.W. union made.
- ♣ Canadian Specifications may vary from these shown, consult Canadian Division.



6

### CATALOG SYSTEM AND OPTIONS

EXAMPLE OF COMPLETE CATALOG NUMBER: **OM6150PAR38SQLWW-CS**

OMEGA Apr.	Lamp (by others)	Square Type	Reflector (required)	Reflector Finish
OM6	75 PAR30 150 PAR38	SQ Square	LWW Lensed Wall Wash	CS Clear Specular CSS Clear Semi-Specular GS Gold Specular WT Wheat PW Pewter BK Black BZ Bronze WH White FF Finish Flange (as suffix to color)



**FIVE YEAR**  
Warranty



\*Readings at working plane, 2'6" above floor. Beam Angle and Diameter Cutoff at 50% of max.  
Candlepower Coefficients used at effective reflectances of: 70% Ceiling, 50% Walls, 20% Floor

To convert values for optional reflector colors, multiply by:  
Gold .90      Bronze .82      Pewter .87

Additional photometric test files are available @ [omegalighting.com](http://omegalighting.com)



**OMEGA LIGHTING:**  
776 South Green St., Tupelo, MS 38804  
Phone 662.842.7212 FAX 662.841.5501

**CANADIAN DIVISION:**  
189 Bullock Drive, Markham, Ontario, Canada L3P 1W4  
Phone 905.294.9570 FAX 800.268.0003