

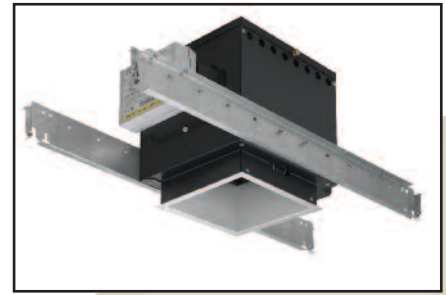
OM6100PAR38MHSQRADJ30

6" Square PAR Metal Halide Adjustable Downlight

CAT. NO:

TYPE:

PROJECT:



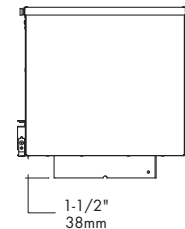
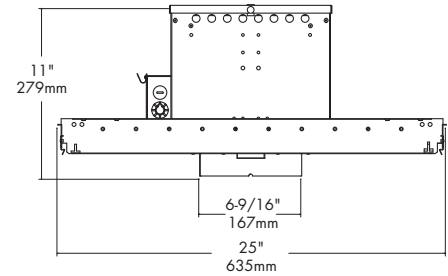
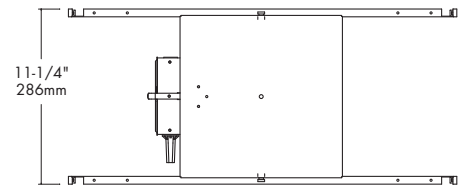
PRODUCT INFORMATION

Applications

Square recessed 30° adjustable downlight well suited for general or accent lighting in sloped ceiling applications, auditoriums, schools, churches, restaurants, hotels and offices. Full horizontal rotation makes this fixture ideal for highlighting store displays, sculpture, or vertical surfaces.

Specifications

- Housing** - Precision formed heavy duty 20 gauge steel with polyester powder coat matte black to suppress light leaks. Housing top may be removed for servicing unit from above. Upper optic is attached to housing lid for easy access to lamp. Housing throat is 1-1/2" in depth to accommodate extra thick ceilings. Junction box and all electrical components may be accessed below or above ceiling. 360 degree rotation and 30° vertical adjustment. Toolless locking of each adjustment provides proper focus and aiming during relamping.
 - Ballast** - Totally enclosed, with <10% THD electronic ballast with internal ignitor, thermally protected. Ballast rated at a minimum starting temperature of - 30°F. Ballast is 120V, 60HZ and 277V 60HZ with a sound rating of "A" for indoor applications. Ballast has a "turn-off" function for increased reliability and safety.
 - Installation** - Housing has pre-installed Revelation C-channels for vertical and/or horizontal adjustment. Channels are pre-set at factory to center in grid ceiling without adjustments. Preset channels ensure proper alignment when row mounting multiple downlights. For wood construction specify Q1031 (ordered separately). Flat bar hanger should install perpendicular to pre-installed bar hangers.
 - Optics** - The lower trim is die-formed of .040 low iridescent aluminum and is self-flanged with a variety of finishes available. Black coating on back of trim provides superior protection against flash and/or light leaks around the flange. White flange is standard. Optional polished flange matching trim finish is available, add FF to catalog number.
 - Sockets** - Medium base 4 K.V. pulse rated porcelain socket with nickel plated copper screw shell and 200°C wire.
 - Junction box** - Large 20 gauge galvanized steel with snap-on cover and ground wire riveted to frame. Approved for through wiring with up to 8 #12 AWG conductors.
 - U.L. Listed** - For use in damp locations and approved for Through Branch Circuit Wiring. I.B.E.W. union made.
- ☛ Canadian Specifications may vary from these shown, consult Canadian Division.



6

CATALOG SYSTEM AND OPTIONS

EXAMPLE OF COMPLETE CATALOG NUMBER: **OM6150PAR38MHSQRADJ30CS-120EB**

OMEGA Apr.	Lamp (by others)	Lamp Type	Square Type	Product Family	Reflector Finish	Optional Lens	Frame Options	Supply Voltage
OM6	150PAR38 ¹ 100PAR38 39PAR30 70PAR30	MH Metal Halide	SQ Square	RADJ30 30° Recessed Adjustable	CS Clear Specular CSS Clear Semi-Specular GS Gold Specular WT Wheat PW Pewter BK Black BZ Bronze WH White CB Corrugated Baffle FF Finish Flange (as suffix to color)	CL Clear Glass PL Prismatic (C73 Glass) SL Solite Glass	FZ Fusing	EU 120/277 120EB Electronic 120V ¹ 277EB Electronic 277V ¹

1. Must specify voltage for 150 watt.
70 PAR30 Fixture will also accept 70W PAR38.
39 PAR30 Fixture will also accept 39W PAR20.



FIVE YEAR
Warranty

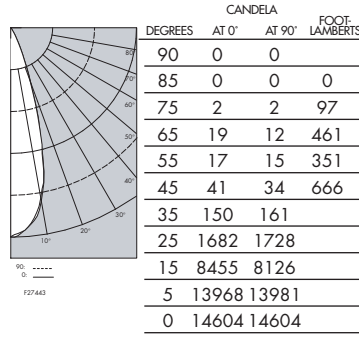
OM6100PAR38MHSQ-RADJ-CS

Clear Specular Reflector

Report number:27443
 Lamp: (1)100WMH
 Fixture Efficiency: 81.5%
 S/MH Ratio (0 degree plane): 0.5
 (90 degree plane): 0.5
 Total Fixture Lumens: 4727
 IES file: F27443.IES
 Beam Angle: 32.42

LIGHTING PERFORMANCE DATA		
CEILING HEIGHT* (FT.)	INITIAL FOOTCANDLES	BEAM DIAMETER (FT.-IN.)
8	482.8	3 - 2
10	259.6	4 - 4
12	161.8	5 - 6
14	110.4	6 - 8
16	80.1	7 - 10

DISTRIBUTION CURVE



COEFFICIENTS OF UTILIZATION ZONAL CAVITY METHOD

Effective Floor Cavity Reflectance 0.20

RC	80			70			50		
	50	30	50	30	50	30	50	30	50
RW	0	96	96	96	96	94	94	94	94
	1	93	92	90	89	92	90	92	90
	2	90	86	84	81	89	85	89	85
	3	86	82	80	78	85	81	85	81
	4	83	80	76	73	82	79	82	79
	5	81	76	72	69	80	76	80	76
	6	79	72	69	67	78	72	78	72
	7	76	70	67	65	75	69	75	69
	8	73	68	65	61	72	68	72	68
	9	71	66	61	59	70	66	70	66
	10	69	64	59	57	68	64	68	64

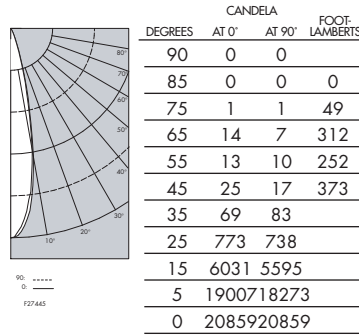
OM670PAR38MHSQ-RADJ-CS

Clear Specular Reflector

Report number: 27445
 Lamp: (1)70WMH
 Fixture Efficiency: 77.6%
 S/MH Ratio (0 degree plane): 0.4
 (90 degree plane): 0.4
 Total Fixture Lumens: 3727
 IES file: F27445.IES
 Beam Angle: 22.76

LIGHTING PERFORMANCE DATA		
CEILING HEIGHT* (FT.)	INITIAL FOOTCANDLES	BEAM DIAMETER (FT.-IN.)
8	689.6	2 - 3
10	370.8	3 - 0
12	231.1	3 - 10
14	157.7	4 - 8
16	114.5	5 - 5

DISTRIBUTION CURVE



COEFFICIENTS OF UTILIZATION ZONAL CAVITY METHOD

Effective Floor Cavity Reflectance 0.20

RC	80			70			50		
	50	30	50	30	50	30	50	30	50
RW	0	92	92	92	92	90	90	90	90
	1	89	88	86	84	88	85	88	85
	2	86	83	81	80	84	82	84	82
	3	83	81	78	76	82	80	82	80
	4	81	78	75	72	81	77	81	77
	5	80	75	71	69	79	75	79	75
	6	78	72	69	68	77	72	77	72
	7	76	70	68	66	75	70	75	70
	8	73	68	66	64	72	68	72	68
	9	71	67	64	63	71	67	71	67
	10	70	66	63	60	69	66	69	66

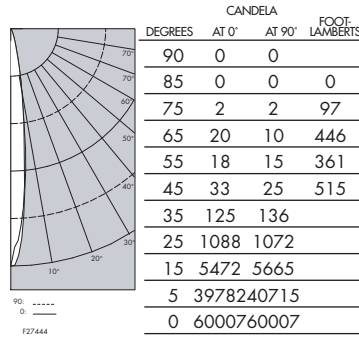
OM6100PAR38MHSQ-RADJ-CS

Clear Specular Reflector

Report number: 27444
 Lamp: (1)100WMH
 Fixture Efficiency: 80.6%
 S/MH Ratio (0 degree plane): 0.2
 (90 degree plane): 0.2
 Total Fixture Lumens: 5481
 IES file: F27444.IES
 Beam Angle: 13.67

LIGHTING PERFORMANCE DATA		
CEILING HEIGHT* (FT.)	INITIAL FOOTCANDLES	BEAM DIAMETER (FT.-IN.)
8	1983.7	1 - 4
10	1066.8	1 - 10
12	664.9	2 - 3
14	453.7	2 - 9
16	329.3	3 - 3

DISTRIBUTION CURVE



COEFFICIENTS OF UTILIZATION ZONAL CAVITY METHOD

Effective Floor Cavity Reflectance 0.20

RC	80			70			50		
	50	30	50	30	50	30	50	30	50
RW	0	95	95	95	95	93	93	93	93
	1	93	92	90	89	91	90	91	90
	2	91	88	85	83	89	86	89	86
	3	88	84	81	80	86	83	86	83
	4	85	81	79	77	84	81	84	81
	5	83	80	77	75	82	79	82	79
	6	81	78	75	72	81	77	81	77
	7	80	76	72	70	80	76	80	76
	8	79	73	71	69	78	73	78	73
	9	77	72	69	68	77	72	77	72
	10	76	70	68	67	75	70	75	70

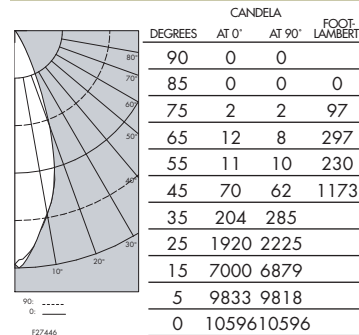
OM670PAR30MHSQ-RADJ-CS

Clear Specular Reflector

Report number: 27446
 Lamp: (1)70WMH
 Fixture Efficiency: 85.7%
 S/MH Ratio (0 degree plane): 0.6
 (90 degree plane): 0.6
 Total Fixture Lumens: 4155
 IES file: F27446.IES
 Beam Angle: 36.46

LIGHTING PERFORMANCE DATA		
CEILING HEIGHT* (FT.)	INITIAL FOOTCANDLES	BEAM DIAMETER (FT.-IN.)
8	350.3	3 - 7
10	188.4	4 - 11
12	117.4	6 - 3
14	80.1	7 - 7
16	58.1	8 - 11

DISTRIBUTION CURVE



COEFFICIENTS OF UTILIZATION ZONAL CAVITY METHOD

Effective Floor Cavity Reflectance 0.20

RC	80			70			50		
	50	30	50	30	50	30	50	30	50
RW	0	102102	102102	102102	100100				
	1	9795	93	93	95	93			
	2	9391	88	85	93	89			
	3	9185	82	80	89	84			
	4	8681	78	75	85	81			
	5	8378	73	70	82	78			
	6	8175	70	68	80	73			
	7	7871	68	65	77	70			
	8	7668	65	61	75	68			
	9	7266	61	59	71	66			
	10	7064	59	56	69	64			

*Readings at working plane, 2'6" above floor. Beam Angle and Diameter Cutoff at 50% of max. Candlepower Coefficients used at effective reflectances of: 70% Ceiling, 50% Walls, 20% Floor

To convert values for optional reflector colors, multiply by:
 Gold .90 Bronze .82 Pewter .87

Additional photometric test files are available @ omegalighting.com



OMEGA LIGHTING:
 776 South Green St., Tupelo, MS 38804
 Phone 662.842.7212 FAX 662.841.5501

CANADIAN DIVISION:
 189 Bullock Drive, Markham, Ontario, Canada L3P 1W4
 Phone 905.294.9570 FAX 800.268.0003