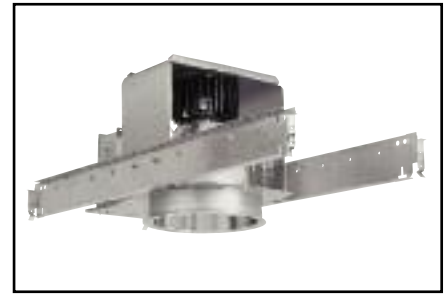


OM6LED

6" LED Downlights with MesoOptics®

CAT. NO:

TYPE: PROJECT:



PRODUCT INFORMATION

Applications

The Omega OM6LED provides unprecedented glare and brightness control. The OM6LED is suitable for a wide range of applications such as, restaurants, lobbies, hotel, medical facilities, offices, retail or residential.

Specifications

1. **Optics** - Units feature a two-piece optical assembly. The upper optic is a precision tooled integration chamber designed to maximize efficiency from the LED array. The lower optic is precision spun .051 low brightness aluminum, self flanged with clear specular Alzak finish. (optional finishes available) MesoOptic lens is gasketed and held between the integration chamber and lower optic. This seals the upper optic and prevents debris and dust from entering the optical source. Various optics available depending on desired beam distribution. Entire optical assembly may be removed without tools from below the ceiling for access to the light engine and/or power supply.

2. **Light Engine** - All units are powered by the Lamina TitanTurbo TruColor™ LED light engine. This innovative source provides Ultra Bright White Light and superior color. This array features an enhanced red and orange color spectrum that makes them ideal for halogen or incandescent replacements. Utilizing Lamina's proprietary AccuBin technology ensures unprecedented consistency across a wide range of criteria, including color control. Superior thermal performance offers long-life, high-lumen maintenance and outstanding reliability. Designed to provide 70% lumen maintenance at 50,000 hours. Typical Lumens - 1040 lm. Typical CRI - 85. Color Temperature - 3,050K +/-100. Fixtures should be installed in applications where ambient temperatures do not exceed 40°C (104°F) during operation.

3. **LED Driver/Power Supply** - Integral, high efficiency driver and power supply choice of 120 or 277 Volt input, 50/60hz.

Input watts - 25. Power factor - > .90 at full load. Drive Current - 2000 ma. Class 2 power supply. Optional 0-10V dimming control available. Provides continuous flicker free dimming from 100% to 1%.

4. **Housing** - Precision die-stamped 18 gauge steel mounting pan with aluminum yoke assembly for thermal management. Integral die cast aluminum heat sink conducts heat away from LED light engine. Accommodates ceiling materials up to 1-3/8" thick.

5. **Installation** - Housings feature Omega Revelation C-Channels with vertical and horizontal adjustment. Channels are factory set for typical 2" T-grid construction and 1/2" ceiling. Adjustment may be made above or below ceiling.

6. **Junction box** - Extra large 43.75-cubic inch 16 gauge galvanized steel with snap-on covers. Approved for through wiring with up to 8 #12 AWG conductors.

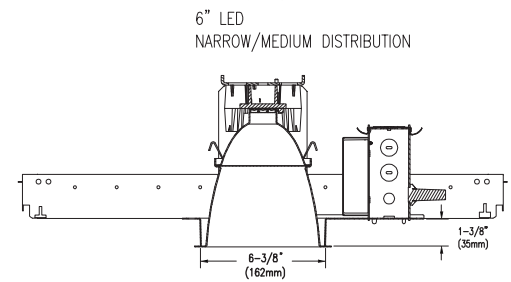
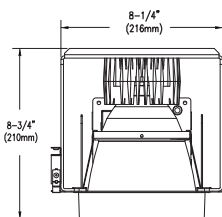
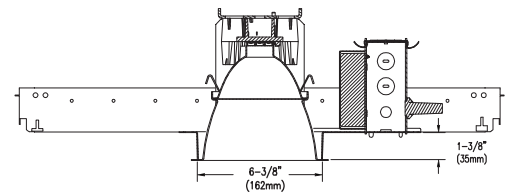
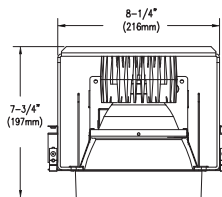
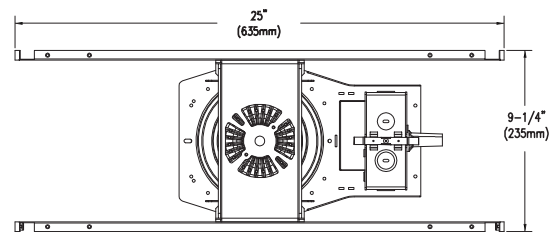
7. **c/ETL Listed** - Suitable for use in wet locations and approved for Through Branch Circuit Wiring. Non IC rated. I.B.E.W. union made.

8. **MRI** - Allows operation in medical MRI applications. Features all aluminum housing and trim construction. LED driver is remote from housing up to 50'.

Canadian Specifications may vary from these shown, consult Canadian Division.



6



6" LED NARROW/MEDIUM DISTRIBUTION

6" LED WIDE DISTRIBUTION

CATALOG SYSTEM AND OPTIONS

EXAMPLE OF COMPLETE CATALOG NUMBER: **OM6LED10-3KNDCS-120**

OMEGA Apr.	Lumens	Color Temp	Distribution ¹	Reflector Finish	Supply Voltage	Options
OM6LED	10 - 1040	3K - 3050K	Downlight ND - Narrow MD - Medium WD - Wide Wall Wash ² WW - Wall Wash	CS Clear Specular CSS Clear Semi-Specular HZ Haze GS Gold Specular WT Wheat PW Pewter BZ Bronze WH White BB - Black Baffle FF Finish Flange (as suffix to color)	120 - 120VAC 277 - 277VAC	DIM - Lutron Hi-Lume Dimming MRI - Magnetic Resonance Imaging Remote Driver (consult factory) ACCESSORIES (ordered separately): OMLED103KIT - Replacement LED with heat sink Emergency Backup - MPCF - Mini Inverter (refer to spec sheet ERS8002)



FIVE YEAR Warranty

1. Distribution not available with Black Baffle option.
2. Emergency Backup available on Wall Wash distribution option.

OM6LED-ND

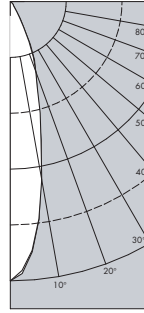
Photometric Data

Clear Specular Reflector

Report Number: 27462
 Lamp: 24W LED
 Total Lumens: 784
 Fixture Efficiency: = 75.4%
 IES File: 27462.IES
 S/MH Ratio = 0.4, 0.4
 Beam Angle: 25.40

LIGHTING PERFORMANCE DATA		
CEILING HEIGHT* (FT.)	INITIAL FOOTCANDLES	BEAM DIAMETER (FT.-IN.)
8	86.7	2 - 6
10	46.6	3 - 5
12	29.1	4 - 3
14	19.8	5 - 2
16	14.4	6 - 1

DISTRIBUTION CURVE



F27462

DEGREES	CANDELA		FOOT-LAMBERTS
	AT 0°	AT 90°	
90	0	0	
85	0	0	0
75	0	0	0
65	1	1	38
55	9	9	251
45	37	36	826
35	73	68	
25	444	415	
15	1019	1084	
5	2361	2348	
0	2624	2624	

COEFFICIENTS OF UTILIZATION ZONAL CAVITY METHOD

Effective Floor Cavity Reflectance 0.20

RC	80			70			50		
	50	30	50	30	50	30	50	30	
RW	50	30	50	30	50	30	50	30	
0	90	90	90	90	88	88			
1	85	83	82	81	83	82			
2	82	80	77	75	81	79			
3	80	76	72	69	78	75			
4	77	71	68	66	75	70			
5	73	68	65	63	72	68			
6	70	66	61	59	69	65			
7	68	63	58	56	68	63			
8	66	60	56	54	66	59			
9	64	57	55	52	63	57			
10	61	56	53	50	60	56			

OM6LED-MD

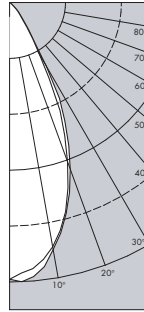
Photometric Data

Clear Specular Reflector

Report Number: 27263
 Lamp: 24W LED
 Total Lumens: 853
 Fixture Efficiency: = 82.0%
 IES File: F27263.IES
 S/MH Ratio = 0.8, 0.7
 Beam Angle: 49.16

LIGHTING PERFORMANCE DATA		
CEILING HEIGHT* (FT.)	INITIAL FOOTCANDLES	BEAM DIAMETER (FT.-IN.)
8	39.9	5 - 0
10	21.5	6 - 10
12	13.4	8 - 8
14	9.1	10 - 6
16	6.6	12 - 4

DISTRIBUTION CURVE



F27263

DEGREES	CANDELA		FOOT-LAMBERTS
	AT 0°	AT 90°	
90	0	0	
85	0	0	0
75	0	0	0
65	1	1	38
55	8	8	223
45	46	39	962
35	145	131	
25	570	521	
15	953	944	
5	1200	1165	
0	1207	1207	

COEFFICIENTS OF UTILIZATION ZONAL CAVITY METHOD

Effective Floor Cavity Reflectance 0.20

RC	80			70			50		
	50	30	50	30	50	30	50	30	
RW	50	30	50	30	50	30	50	30	
0	97	97	97	97	94	94			
1	93	91	89	88	91	89			
2	89	84	81	80	86	83			
3	84	80	76	72	82	79			
4	81	75	70	68	79	73			
5	77	70	66	63	76	69			
6	73	67	61	58	71	66			
7	69	63	57	55	68	63			
8	67	59	55	52	66	58			
9	64	56	52	48	63	56			
10	60	54	48	46	60	54			

OM6LED-WD

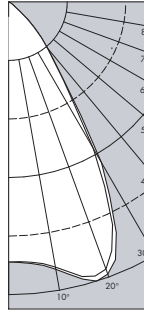
Photometric Data

Clear Specular Reflector

Report Number: 27402
 Lamp: 24W LED
 Total Lumens: 709
 Fixture Efficiency: = 68.1%
 IES File: F27402.IES
 S/MH Ratio = 1.1, 1.1
 Beam Angle: 64.51

LIGHTING PERFORMANCE DATA		
CEILING HEIGHT* (FT.)	INITIAL FOOTCANDLES	BEAM DIAMETER (FT.-IN.)
8	19.4	6 - 11
10	10.4	9 - 6
12	6.5	11 - 12
14	4.4	14 - 6
16	3.2	17 - 0

DISTRIBUTION CURVE



F27402

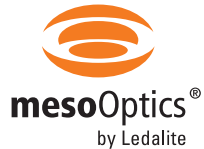
DEGREES	CANDELA		FOOT-LAMBERTS
	AT 0°	AT 90°	
90	0	0	
85	0	0	0
75	0	0	0
65	2	2	76
55	16	13	404
45	84	81	1867
35	219	215	
25	575	555	
15	648	642	
5	593	590	
0	587	587	

COEFFICIENTS OF UTILIZATION ZONAL CAVITY METHOD

Effective Floor Cavity Reflectance 0.20

RC	80			70			50		
	50	30	50	30	50	30	50	30	
RW	50	30	50	30	50	30	50	30	
0	81	81	81	81	79	79			
1	77	75	73	71	76	73			
2	72	69	67	65	71	68			
3	68	65	60	58	68	64			
4	66	59	56	53	64	59			
5	61	56	52	48	60	56			
6	58	53	47	45	57	52			
7	56	48	45	41	55	48			
8	53	46	41	39	52	46			
9	50	42	39	35	48	42			
10	47	40	36	34	46	40			

*Performance tested at 25°C ambient.



*Readings at working plane, 2'6" above floor. Beam Angle and Diameter Cutoff at 50% of max. Candlepower Coefficients used at effective reflectances of: 70% Ceiling, 50% Walls, 20% Floor

To convert values for optional reflector colors, multiply by:
 Gold .90 Bronze .82 Pewter .87

Additional photometric test files are available @ omegalighting.com



OMEGA LIGHTING:
 776 South Green St., Tupelo, MS 38804
 Phone 662.842.7212 FAX 662.841.5501

CANADIAN DIVISION:
 189 Bullock Drive, Markham, Ontario, Canada L3P 1W4
 Phone 905.294.9570 FAX 800.268.0003