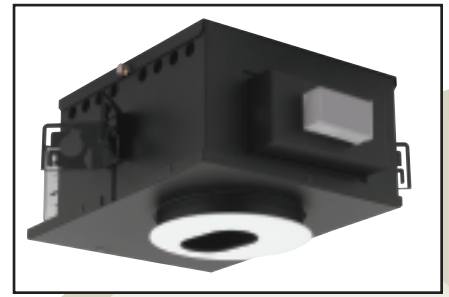


OM475MR16LVRADJ45-SLOT

4" Low Voltage 45° Adjustable Slot Downlight

CAT. NO:

TYPE: PROJECT:



PRODUCT INFORMATION

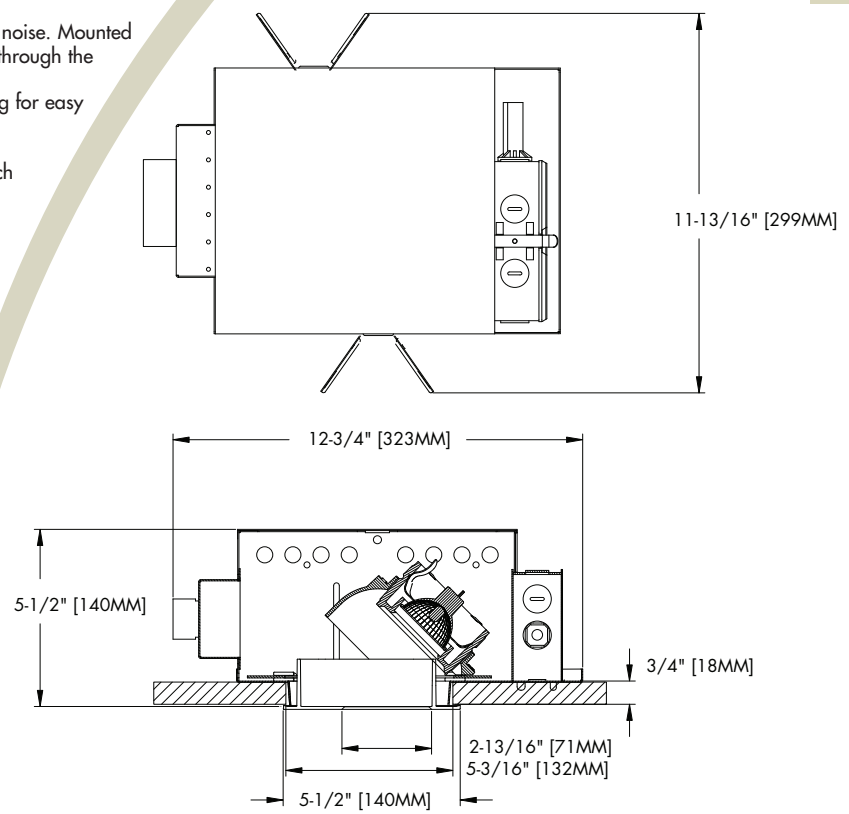
Applications

Recessed 45° adjustable downlight well suited for general or accent lighting in sloped ceiling applications, auditoriums, schools, restaurants, hotels, and offices. Full horizontal rotation makes this fixture ideal for highlighting store displays, sculptures, or vertical surfaces.

Specifications

- Housing** - Heavy 20 gauge formed steel housing features a matte black finish to suppress stray light.
- Installation** - Mounting pan has pre-installed universal mounting brackets with vertical adjustment. Junction box and mounting brackets are accessible from below ceiling. Housing is accessible from above ceiling through removable top cover. For 24" C-channel hangers (pair), specify Q1032 accessory, ordered separately. For 27" flat bar hangers (pair), specify Q1031 accessory, ordered separately. For adjustable bar hangers (pair), specify Q1033 accessory, ordered separately.
- Transformer** - Dimmable electronic transformer reduces weight and noise. Mounted via thumbscrews for tool-less replacement. Serviceable from above or through the aperture. Magnetic transformer optional.
- Socket** - Bi-pin 20-75 watt GU5.3 base with a quick-disconnect plug for easy replacement.
- Junction Box** - Extra large 32-cubic inch 16 gauge galvanized steel designed to meet U.L./NEC requirements. Approved for through branch wiring with up to 6 #12 AWG connectors.
- Hot Aim** - Feature that facilitates obstruction-free aiming with a screwdriver.
- Aim Locks** - Rotation and tilt adjustments are lockable via thumb-screws, providing tool-less locking. Mechanical locks also prevent misalignment during relamping.
- Trim** - Die-cast aluminum trim with mitered edges to eliminate flash.
- Media** - Accommodates up to 3 media cartridges. Media remains in place during relamping.
- Tilt Mechanism** - Die-cast assembly features indexing for consistent aiming. Shroud extension covers aperture to block view of the inside of the housing.
- Lamp Retention System** - Patented lamp retention spring holds the lamp and media captive and makes relamping simple.
- Relamping** - Fixture is suitable for top and bottom relamping. Additional relamp label provided for commissioning.
- Heat Sink** - Die-cast aluminum lamp and media cartridge dissipates heat to lower operating temperatures and lengthen lamp life.
- Thermal Protection** - A thermal protection device which meets all U.L. and NEC requirements is standard.
- U.L. Listed** - For use in Non-IC damp locations and approved for Through Branch Circuit Wiring. I.B.E.W. union made.

* Canadian Specifications may vary from these shown, consult Canadian Division.



C-Channel not included.

4

CATALOG SYSTEM AND OPTIONS

EXAMPLE OF COMPLETE CATALOG NUMBER: **OM475MR16LVRADJ45-SLOT-ET120**

OMEGA Revelation 4" Lamp	Max Wattage/ Construction	Housing Construction	Trim	Finish(1)	Supply Voltage	Lens Accessories	Bar Hanger Accessories
OM4	75MR16LV	RADJ45 Recessed Adjustable 45°	SLOT Slotted	Blank White BK Black BZ Bronze AL Aluminum	ET120 Electronic 120vac ET277 Electronic 277vac MB120 Magnetic 120vac MB277 Magnetic 277vac	OMMR16AF Amber Filter OMMR16BF Blue Filter OMMR16RF Red Filter OMMR16GF Green Filter OMMR16YF Yellow Filter OMMR16PF Pink Filter OMMR16LS Linear Spread OMMR16UV Optivex UV Filter OMMR16FL Frosted Lens OMMR16SO Solite Lens OMMR16LR Louver OMMR16PL Prismatic Lens	Q1031 Flat Bar Hanger Q1032 Channel Bar Hanger Q1033 Adjustable Bar Hanger



FIVE YEAR
Warranty

FOOTNOTES

1. Powder coat, additional colors available. Consult factory.

OM475MR16LVRADJ25-SLOT-ET120

Slot - 25° Tilt

Narrow Spot 15°

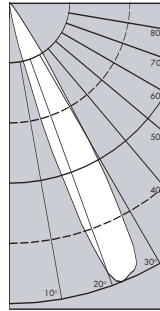
Report Number: 26498

Lamp: Q71MR16 NSP15

Total Lumens: 1125

IES File: F26498.IES

DISTRIBUTION CURVE



90: -----
0: -----
f26498

DEGREES	CANDELA		FOOT-LAMBERTS
	AT 0°	AT 90°	
90	1	2	
85	1	2	2163
75	1	2	728
65	1	2	535
55	1	1	197
45	24	1	2612
35	434	1	
25	4449	3	
15	1811	8	
5	52	21	
0	33	33	

COEFFICIENTS OF UTILIZATION
ZONAL CAVITY METHOD

Effective Floor Cavity Reflectance 0.20

RC	Effective Floor Cavity Reflectance 0.20					
	80		70		50	
RW	50	30	50	30	50	30
0	58	58	57	57	55	55
1	55	54	54	53	52	51
2	51	48	50	47	48	46
3	47	45	46	45	46	44
4	44	41	44	40	42	40
5	41	39	40	38	40	38
6	39	35	38	35	38	34
7	35	33	35	33	34	33
8	34	30	34	30	33	30
9	32	28	32	28	30	28
10	29	27	29	27	28	27

4

OM475MR16LVRADJ45-SLOT-ET120

Slot - 45° Tilt

Narrow Spot 15°

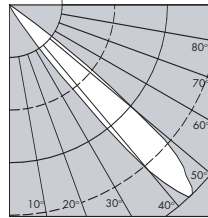
Report Number: 26467-1

Lamp: Q71MR16 NSP15

Total Lumens: 1125

IES File: F26467-1.IES

DISTRIBUTION CURVE



90: -----
0: -----
f264671

DEGREES	CANDELA		FOOT-LAMBERTS
	AT 0°	AT 90°	
90	1	6	
85	1	6	3749
75	1	6	1359
65	3	5	952
55	191	5	17133
45	4299	5	305919
35	1082	2	
25	96	1	
15	15	1	
5	8	1	
0	3	3	

COEFFICIENTS OF UTILIZATION
ZONAL CAVITY METHOD

Effective Floor Cavity Reflectance 0.20

RC	Effective Floor Cavity Reflectance 0.20					
	80		70		50	
RW	50	30	50	30	50	30
0	68	68	67	67	64	64
1	60	58	59	57	57	56
2	54	50	53	50	51	47
3	46	42	46	41	45	40
4	40	35	40	35	39	34
5	35	30	34	29	34	29
6	39	30	38	30	22	25
7	27	22	27	22	26	20
8	23	19	23	19	23	17
9	20	16	20	16	20	16
10	19	14	19	14	17	14

OM475MR16LVRADJ45-SLOT-ET120

Slot - 45° Tilt

Narrow Flood 25°

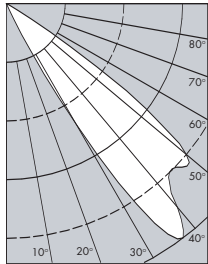
Report Number: 26466-1

Lamp: Q71MR16 NFL25

Total Lumens: 1175

IES File: F26466-1.IES

DISTRIBUTION CURVE



90: -----
0: -----
f264661

DEGREES	CANDELA		FOOT-LAMBERTS
	AT 0°	AT 90°	
90	1	6	
85	1	6	3749
75	1	7	1457
65	2	6	952
55	846	4	74490
45	1801	4	128310
35	2168	2	
25	131	1	
15	9	1	
5	1	1	
0	1	1	

COEFFICIENTS OF UTILIZATION
ZONAL CAVITY METHOD

Effective Floor Cavity Reflectance 0.20

RC	Effective Floor Cavity Reflectance 0.20					
	80		70		50	
RW	50	30	50	30	50	30
0	65	65	63	63	60	60
1	57	56	56	55	55	53
2	51	47	50	46	47	46
3	45	40	44	40	42	39
4	39	34	39	34	36	34
5	34	29	34	28	33	28
6	29	25	29	25	28	25
7	27	22	26	22	25	20
8	23	19	23	19	23	17
9	20	16	20	16	20	16
10	19	14	17	14	17	14

*Readings at working plane, 2'6" above floor. Beam Angle and Diameter Cutoff at 50% of max. Candlepower Coefficients used at effective reflectances of: 70% Ceiling, 50% Walls, 20% Floor

Additional photometric test files are available @ omega-lighting.com



OMEGA LIGHTING:
776 South Green St., Tupelo, MS 38804
Phone 662.842.7212 FAX 662.841.5501

CANADIAN DIVISION:
189 Bullock Drive, Markham, Ontario, Canada L3P 1W4
Phone 905.294.9570 FAX 800.268.0003