

CT6564, 6565, 6569, 6570

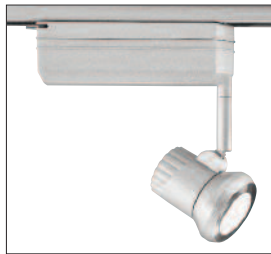
Line Voltage 120V
CDM Metal Halide

atTRACtion

Catalog Number: _____

Type: _____

Project: _____



CT6565

Description

The atTRACtion Track Fixture offers ceramic arc metal halide lamp technology along with the energy savings of an electronic ballast in a sleek miniature luminaire. For use in showrooms, retail stores or areas requiring brightness and high CRI Index. PAR lamps and MR16 are easily loaded from the front of the fixture.

Features

- Standard electronic ballast.
- Full range of adjustment.
- Operates on 120 volt line voltage.
- Lamp technology provides for minimal color shift.
- Integral switch on housing permits interruption of power for routine lamp maintenance.
- Die cast ballast housing.
- 93 degree vertical tilt.
- UL listed.

Lamps Available:

- CDM139/PAR20 or CDM139/PAR30
- CDM170/PAR30 or CDM170/PAR38
- CDM139/MR16 (GX10)
- CDM120/MR16 (GX10)

CATALOG SYSTEM AND OPTIONS

SAMPLE CATALOG NUMBER: CT6569W-CG25W

Track Head

Finishes

Accessories (order separately)

Choose one of the following shrouds to complete the application

Lamp

- CT6564
20W(MR16/GX10)
- CT6565
39W(MR16/GX10)
- CT6569
39W(PAR20/PAR30L)
- CT6570
70W(PAR30L/PAR38)

- W White
- BK Black
- SL Silver

Lamp

- MR16 (GX10)
- PAR20
- PAR30L
- PAR38

Bezel

- CZ10
- CZ25
- CZ35L²
- CZ38

Cone

- CC10
- CC25
- CC35L²
- CC38

Gimbal

- CG10
- CG25
- CG35L²
- CG38

Mesh

- CM10
- CM25
- CM35L²
- CM38

Slotted Bezel

- CS10
- CS25
- CS35L²
- CS38

Collar

- CO25³

Accessory Finishes

- W White
- BK Black
- SL Silver

General Notes:

1. Order separately.
2. Use CDM170/PAR30L lamp.
3. Not for use with MR16 (GX10) lamp.

SPECIFICATIONS

- Ballast Housing** - Housing is made of die-cast aluminum for maximum rigidity and better heat dissipation. Housing is designed with visual line breaks and contoured bottom edge to reduce reflective surfaces. Narrow housing width matched to rail width preventing ceiling shadows.
- Fixture Head** - Integral to ballast housing, made of die cast aluminum to further improve heat dissipation. Sleek forward slant profile transitions smoothly into fluted tail section. For use in showrooms, retail and residential applications.
- Ballast** - Standard electronic transformer designed to regulate and operate metal halide lamp to optimal performance. Electronic ballast regulates voltage and current to lamp, providing consistent lumen output and lamp color uniformity. Electronic ballast improves end of life detection.
- Socket** - Porcelain pulse rated medium base nickel plated copper screw shell for PAR lamps. Porcelain twist-lock GX10 base for MR16 lamps.
- Finishes** - Choice of finishes in W (white) or BK (black) or SL (silver).

Accessories

Bezel - Tapered lamp shade is designed to contour the PAR shaped ceramic metal halide lamps providing a clean finished look. Attaches to base unit (CT6565, CT6569, CT6570) by two keyhole slots.

Cone - Conical shaped designed shade to conceal the PAR shaped ceramic metal halide lamps. Attaches to base unit (CT6569) by two key hole slots.

Gimbal Ring - Gimbal ring provides a traditional open lamp decorative piece to PAR shaped ceramic metal halide lamps. Attaches to base unit (CT6569) by two key hole slots.

Mesh - Wire mesh lamp shade is designed to fit PAR shaped ceramic metal halide lamps providing innovative look to fixture. Attaches to base unit (CT6569) by two key hole slots.

Collar - Color matched collar aids to conceal neck of lamp. Cannot be used with other accessories.

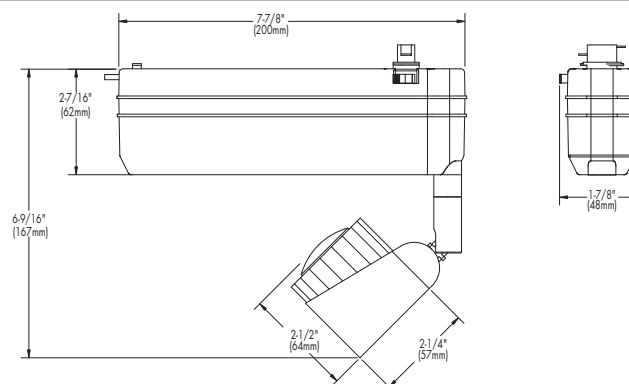
SHROUD CHART

	Bezel	Cone	Gimbal	Mesh	Slot	Collar
PAR20	CZ25	CC25	CG25	CM25	CS25	CO25
PAR30L	CZ35L	CC35L	CG35L	CM35L	CS35L	
PAR38	CZ38	CC38	CG38	CM38	CS38	
GX10	CZ10	CC10	CG10	CM10	CS10	

ACCESSORY CHART	PAR20/GX10	PAR 30L	PAR 38
Gimbal Ring	CA225*	CA235*	CA238*
Louwer/Filter			
Holder	CH25	CH35	CH38
Louwer	CL25	CL35	CL38
Filter Series	CF43-CF46	CF13-CF17	CF22-CF27

* Required when using any accessory.

DIMENSIONS



REV. 09/09
TRI-21

CT6564, 6565, 6569, 6570

LAMP DATA

LEGEND

- D** Distance from wall to track in feet.
- H** Distance from ceiling to center of object in feet.
- S** Spacing between fixtures for uniform (2:1) illumination.
- FC** Footcandle level at center of beam. Footcandle values have been cosine corrected.
- L** Effective visual beam length in feet.
- W** Effective visual beam width in feet.

Note: Beamspreads are measured to 50% MCP.

CMH35/PAR30/M/SP

35W SPOT
RATED LIFE: 9000 hours BEAM SPREAD: 10°

SPOT



VERTICAL		D = DISTANCE FROM WALL (FEET)														
		0'			2'			3'			4'			5'		
H	S	FC	L	W	FC	L	W	FC	L	W	FC	L	W	FC	L	W
6	1.5	1167	1.0	1.0	359	3.2	1.0	424	2.6	1.2	452	2.3	1.3	443	2.1	1.4
8	2.0	656	1.4	1.4	170	5.1	1.3	206	4.3	1.5	238	3.5	1.5	250	3.2	1.7
10	2.4	420	1.7	1.7	70	15.4	2.0	106	7.6	1.9	136	5.2	1.9	153	4.4	1.9
12	2.9	292	2.1	2.1	39	29.5	2.5	66	10.2	2.2	85	7.1	2.1	97	6.0	2.2

CMH35/PAR30/M/FL

35W FLOOD
RATED LIFE: 9000 hours BEAM SPREAD: 30°

FLOOD



VERTICAL		D = DISTANCE FROM WALL (FEET)														
		0'			2'			3'			4'			5'		
H	S	FC	L	W	FC	L	W	FC	L	W	FC	L	W	FC	L	W
4	2.5	406	2.1	2.1	148	7.2	2.4	160	4.8	2.6	146	4.4	3.0	125	4.9	3.4
6	3.8	181	3.2	3.2	56	20.0	3.1	66	10.8	3.5	70	8.1	3.8	68	7.7	4.2
8	5.1	102	4.3	4.3	26	111.3	3.9	32	24.4	4.5	37	14.4	4.7	39	11.7	5.1
10	6.4	65	5.4	5.4	11	150.2	6.2	16	166.9	5.8	21	27.3	5.7	24	18.0	5.9

CMH70/PAR38/SP

70W SPOT
RATED LIFE: 10000 hours BEAM SPREAD: 15°

SPOT



VERTICAL		D = DISTANCE FROM WALL (FEET)														
		0'			2'			3'			4'			5'		
H	S	FC	L	W	FC	L	W	FC	L	W	FC	L	W	FC	L	W
6	1.7	778	1.6	1.6	239	5.2	1.5	282	4.1	1.7	301	3.5	1.9	295	3.3	2.0
8	2.2	438	2.1	2.1	113	8.8	1.9	137	7.0	2.2	159	5.5	2.3	167	4.9	2.5
10	2.7	280	2.6	2.6	47	22	3.0	71	13.2	2.9	90	8.4	2.8	102	6.8	2.9
12	3.1	194	3.2	3.2	26	44	3.8	44	18.7	3.3	57	11.6	3.2	65	9.5	3.4

CMH70/PAR38/FL

70W FLOOD
RATED LIFE: 10000 hours BEAM SPREAD: 25°

FLOOD



VERTICAL		D = DISTANCE FROM WALL (FEET)														
		0'			3'			4'			5'			6'		
H	S	FC	L	W	FC	L	W	FC	L	W	FC	L	W	FC	L	W
4	2.5	1000	2.1	2.5	385	5.1	2.7	360	4.4	3.0	303	4.7	3.4	255	9.2	3.9
6	3.8	444	3.2	3.7	161	10.8	3.5	172	8.1	3.8	169	7.2	4.2	157	6.9	4.5
8	5.1	250	4.3	5.0	79	24.4	4.5	91	14.4	4.7	95	11.7	5.1	96	10.2	5.3
10	6.4	160	5.4	5.4	40	166.9	5.8	52	27.3	5.7	58	18.0	5.9	61	15.1	6.2

CMH MRI16 / metal halide lamps

	BEAM SPREAD	CBCP	RATED LIFE
20W	12°	9000	12000
MR16			
spot			

Consult lamp manufacturer for availability and performance data.

20W	25°	2900	12000
MR16			
flood			

Consult lamp manufacturer for availability and performance data.

39W	12°	16000	10000
MR16			
spot			

Consult lamp manufacturer for availability and performance data.

39W	25°	5500	10000
MR16			
flood			

Consult lamp manufacturer for availability and performance data.

Capri Lighting reserves the right to make changes without notice.©2007

TRI-21

CAPRI LIGHTING:
776 South Green St., Tupelo, MS 38804
Phone 662.842.7212 FAX 662.841.5501
www.capriighting.com

CANADIAN DIVISION:
189 Bullock Drive, Markham, Ontario, Canada L3P 1W4
Phone 905.294.9570 FAX 800.268.0003

PHILIPS
capri